



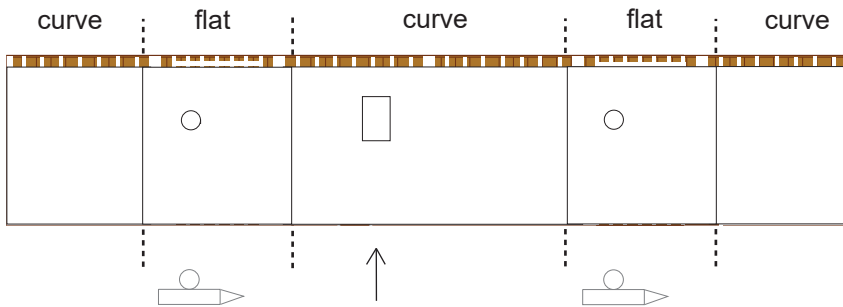
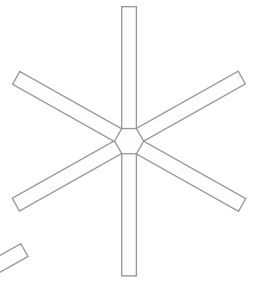
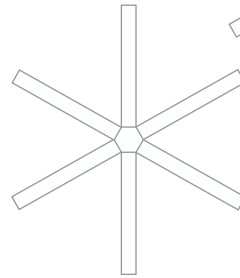
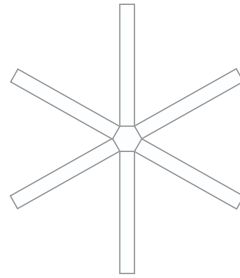
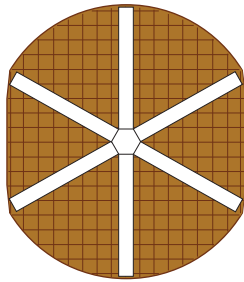
1:100 Scale



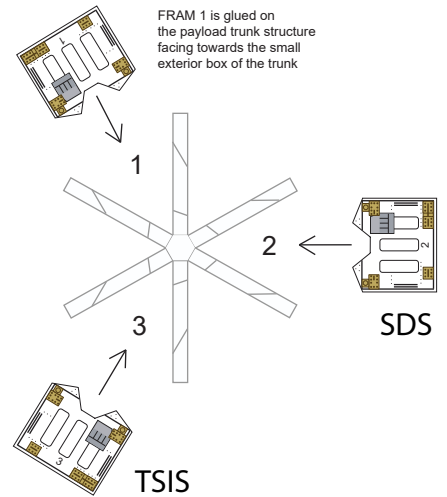
# Dragon's Trunk and Payload

Print on Cardstock (110 lbs)

## CRS-13

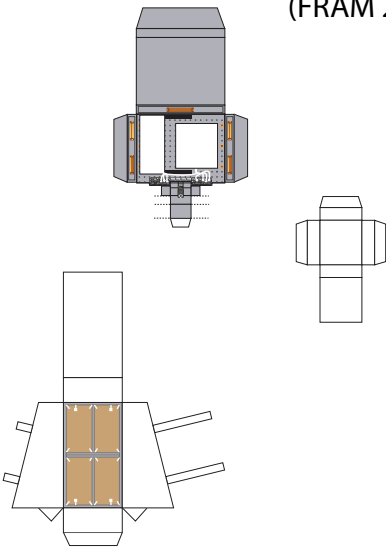


This curved area with the small rectangle is glued on the same side of the trunk that has the small rectangular box on the outside.



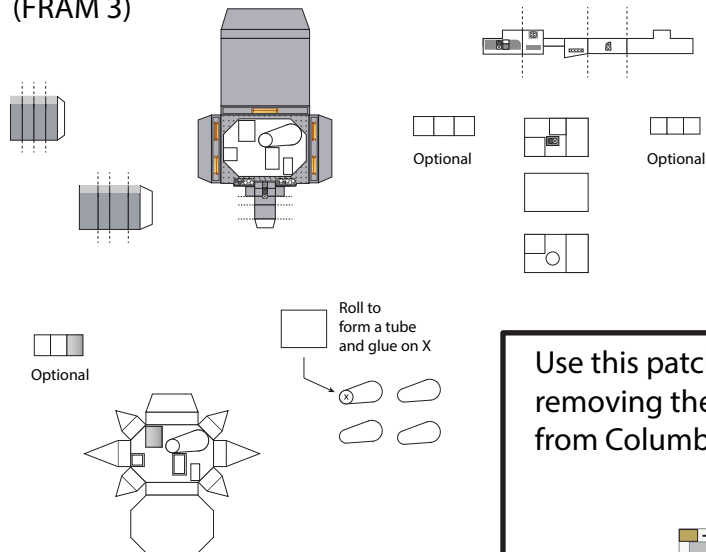
### Space Debris Sensor

(FRAM 2)



### Total and Spectral Irradiance Sensor

(FRAM 3)



Use this patch when removing the ISS-RapidScat from Columbus Module