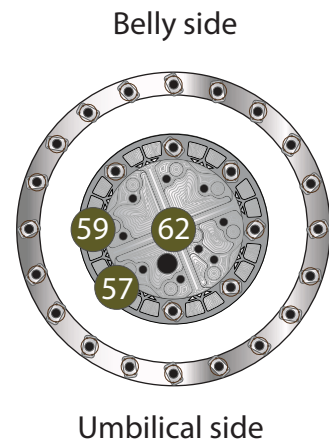
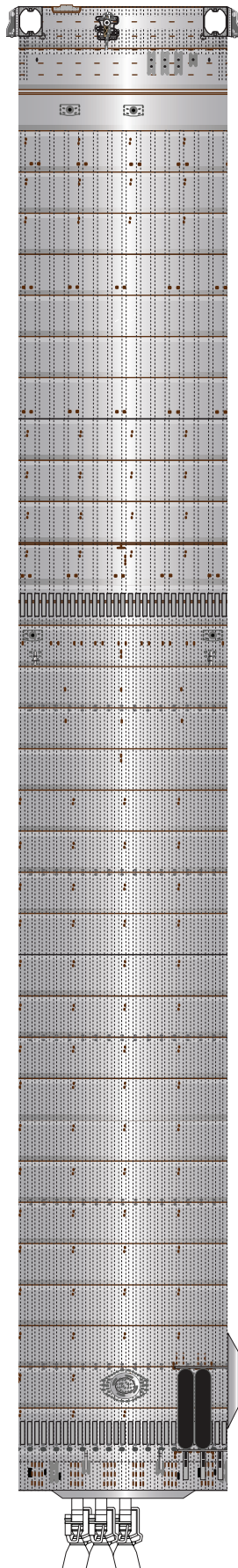




1:100 Scale

BN-3

Use
metallic paper





1 cm

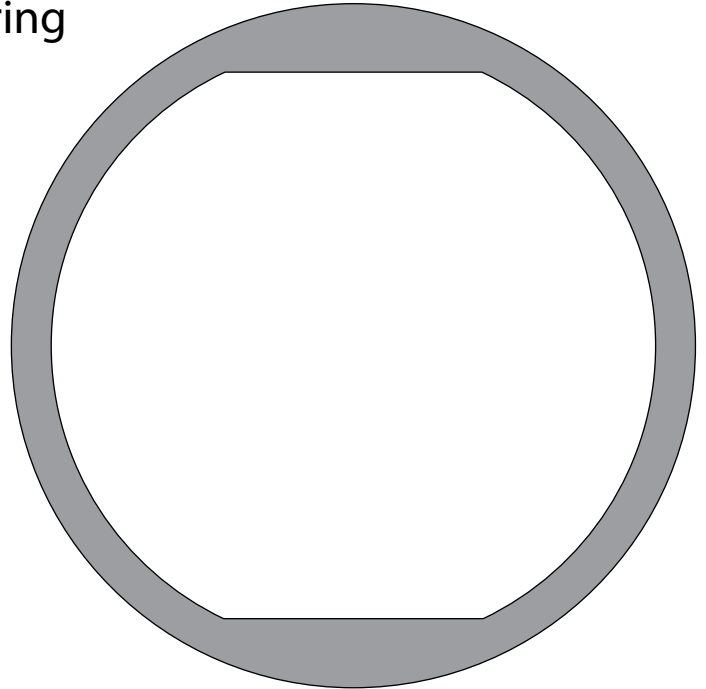
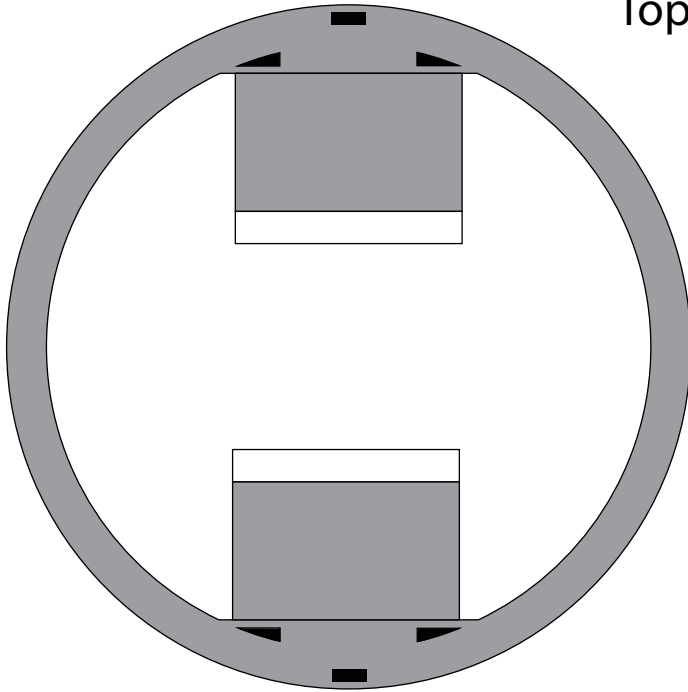
1 inch

1:100 Scale

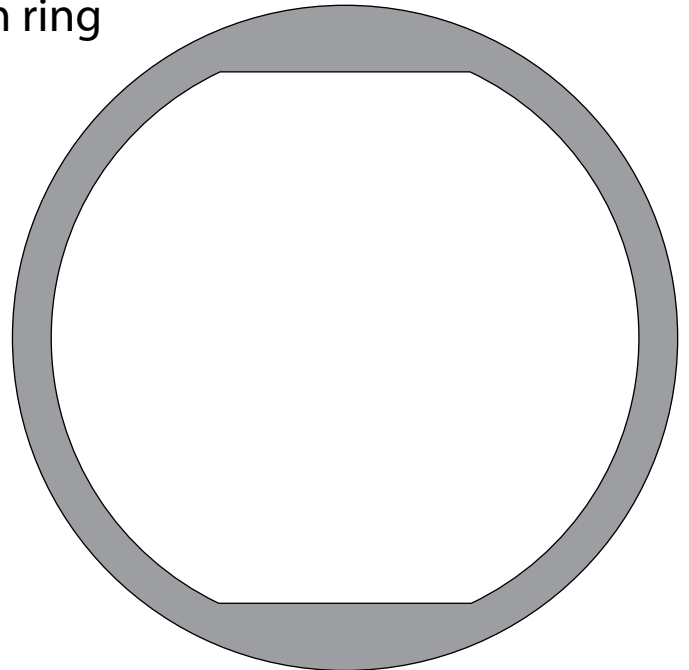
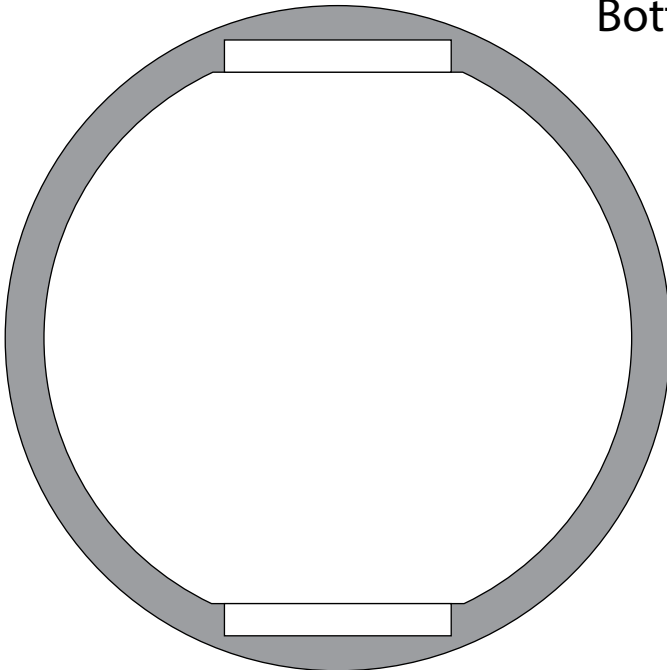
SpaceX SuperHeavy

Print on Cardstock (110 lbs)

Top ring



Bottom ring





1:100 Scale



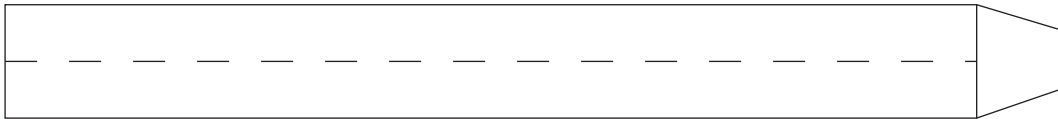
SpaceX Starship BN-3

Print on Cardstock (110 lbs)

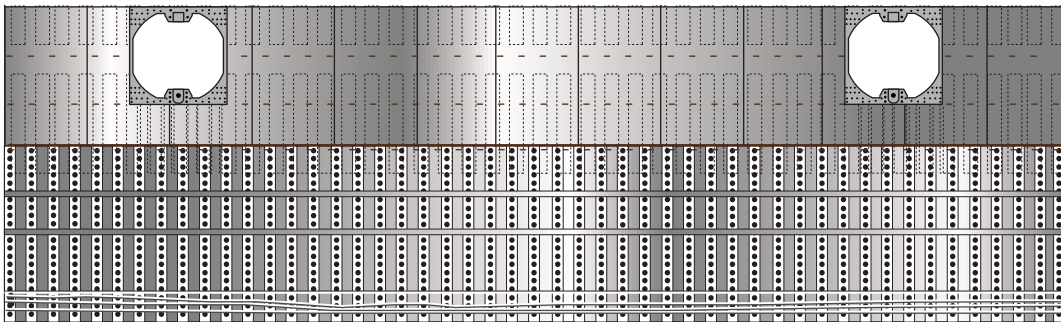
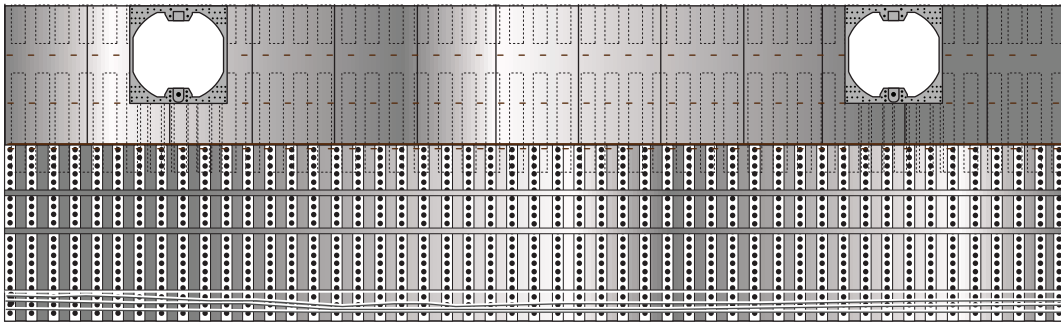
Connectors for each body segment



top/middle



middle/bottom



Interior wall
for upper dome
section



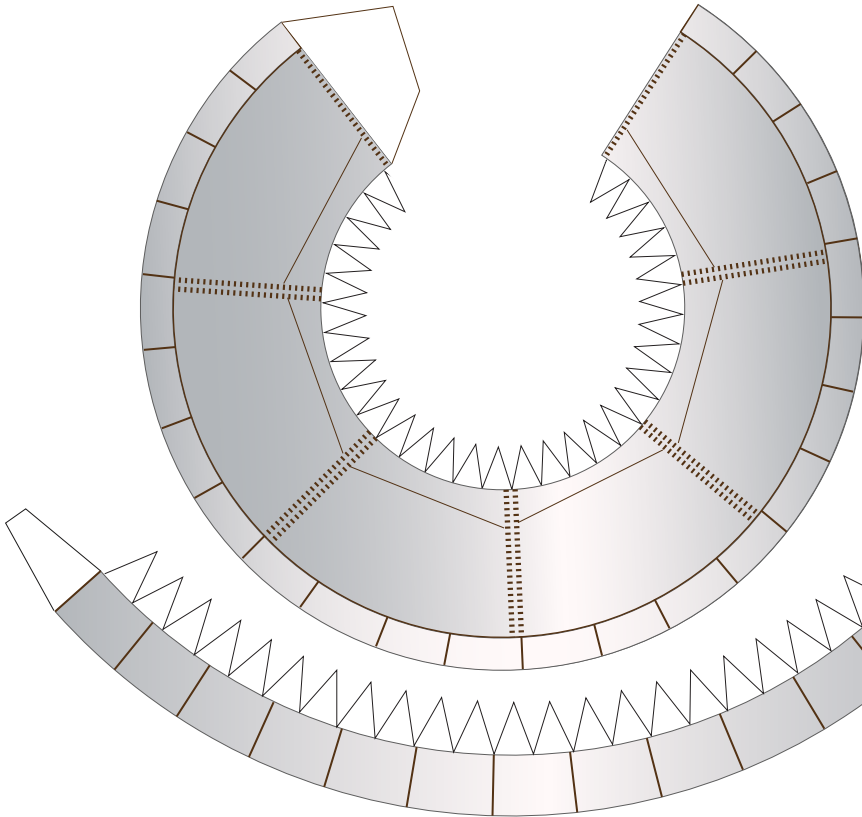
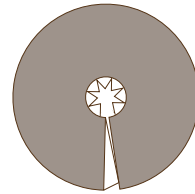
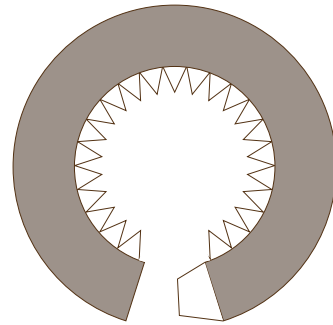
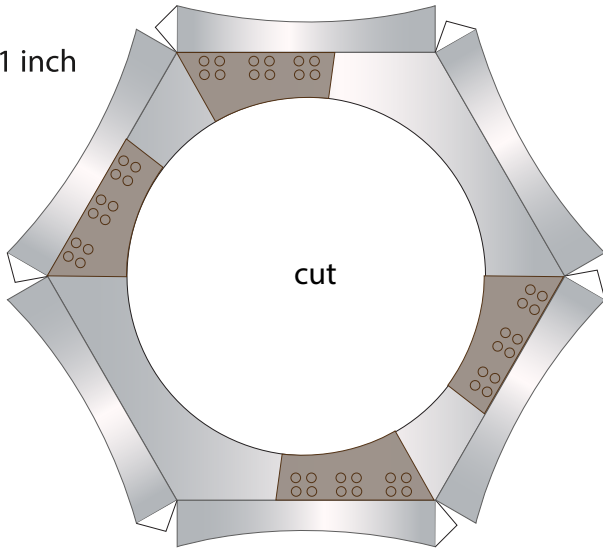
1 cm

1 inch

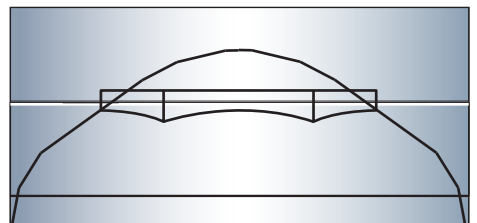
1:100 Scale

Starship BN-3 Upper Dome

Print on Cardstock (110 lbs)



Diagram





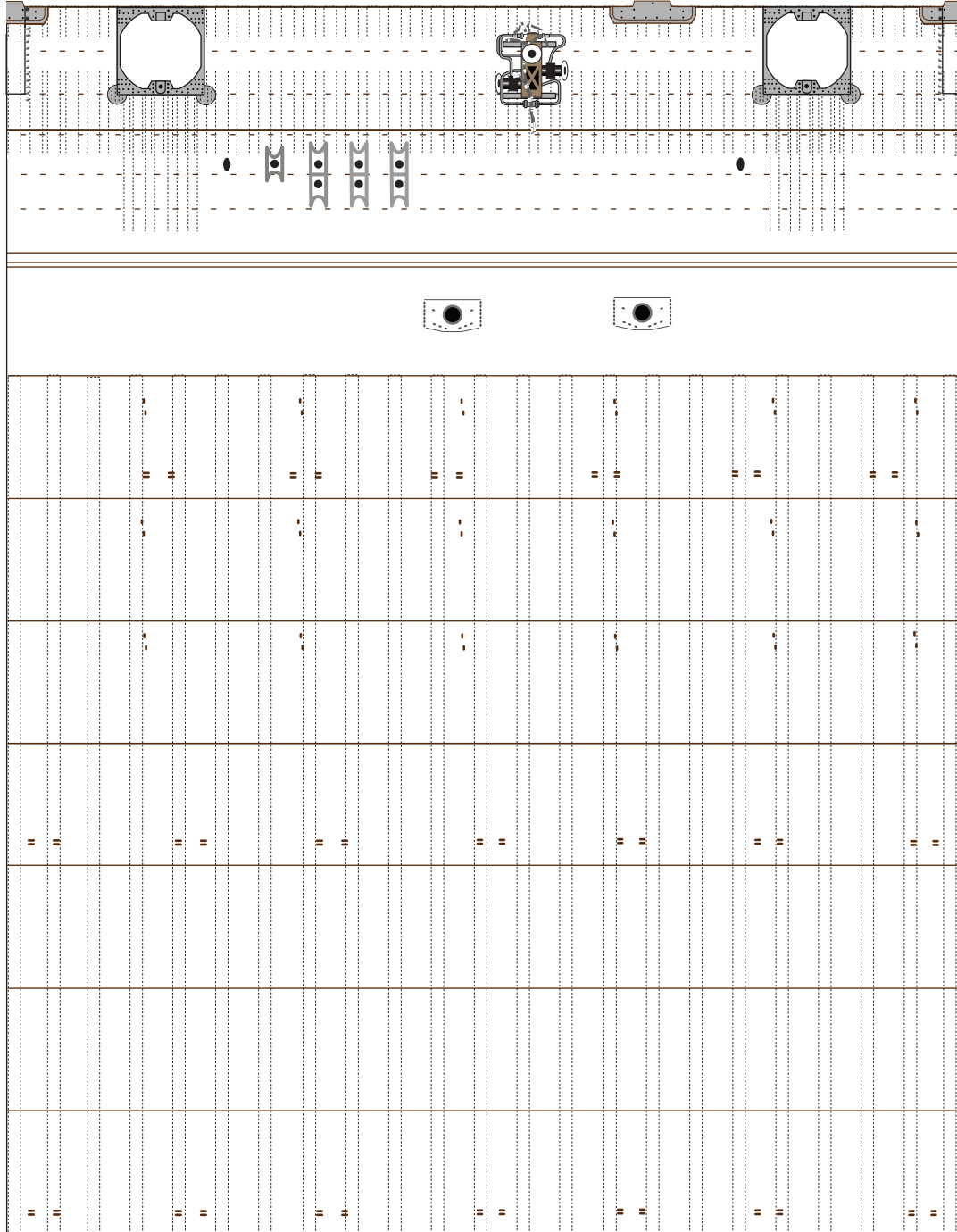
1:100 Scale



SpaceX BN3

Print on metallic paper
on its white side

Belly side top





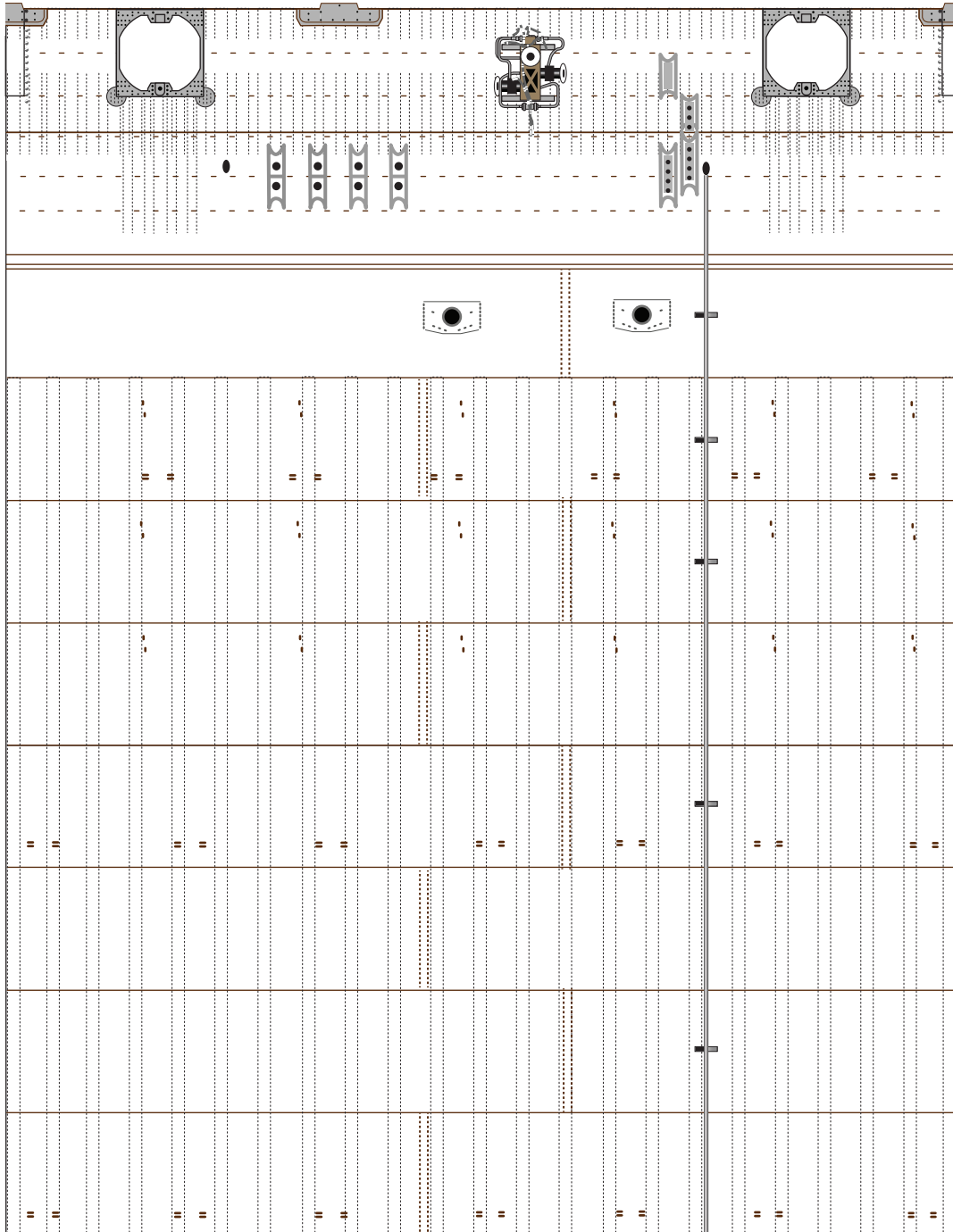
1:100 Scale



SpaceX BN3

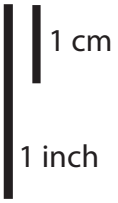
Print on metallic paper
on its white side

Back side top





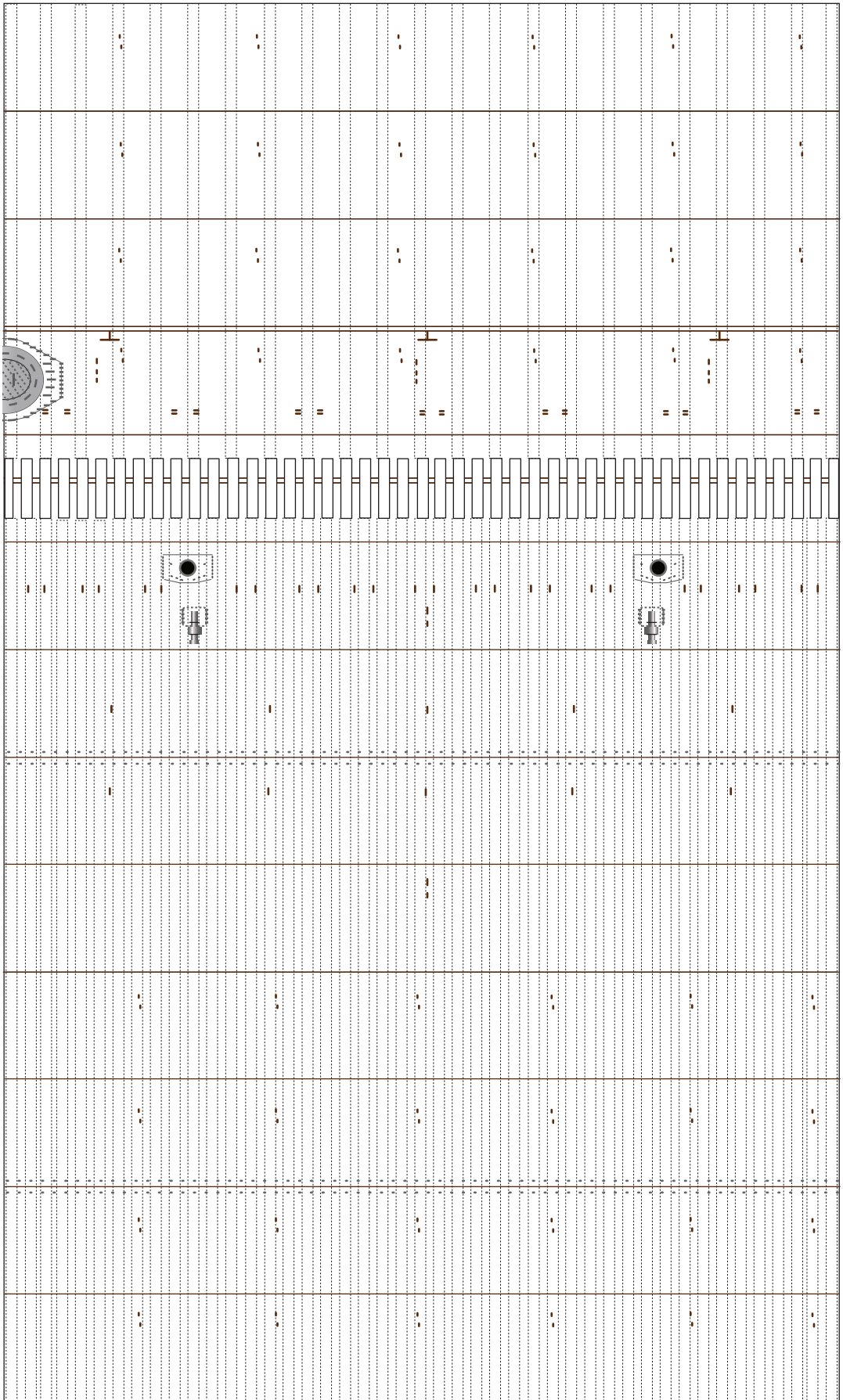
1:100 Scale



SpaceX BN3

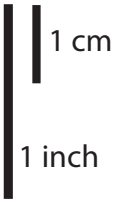
Print on metallic paper
on its white side

Belly side middle





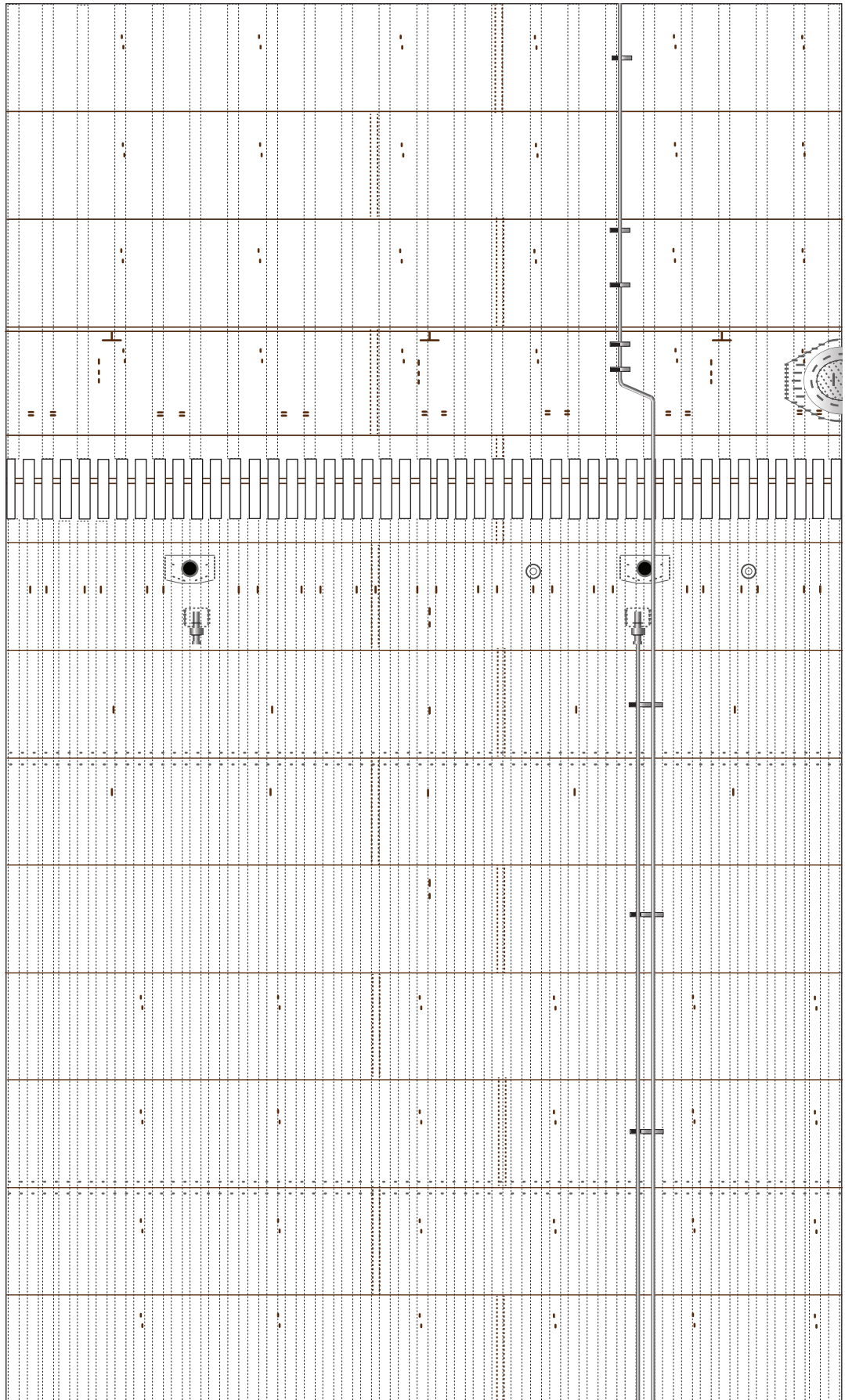
1:100 Scale



SpaceX BN3

Print on metallic paper
on its white side

Back side middle





1:100 Scale

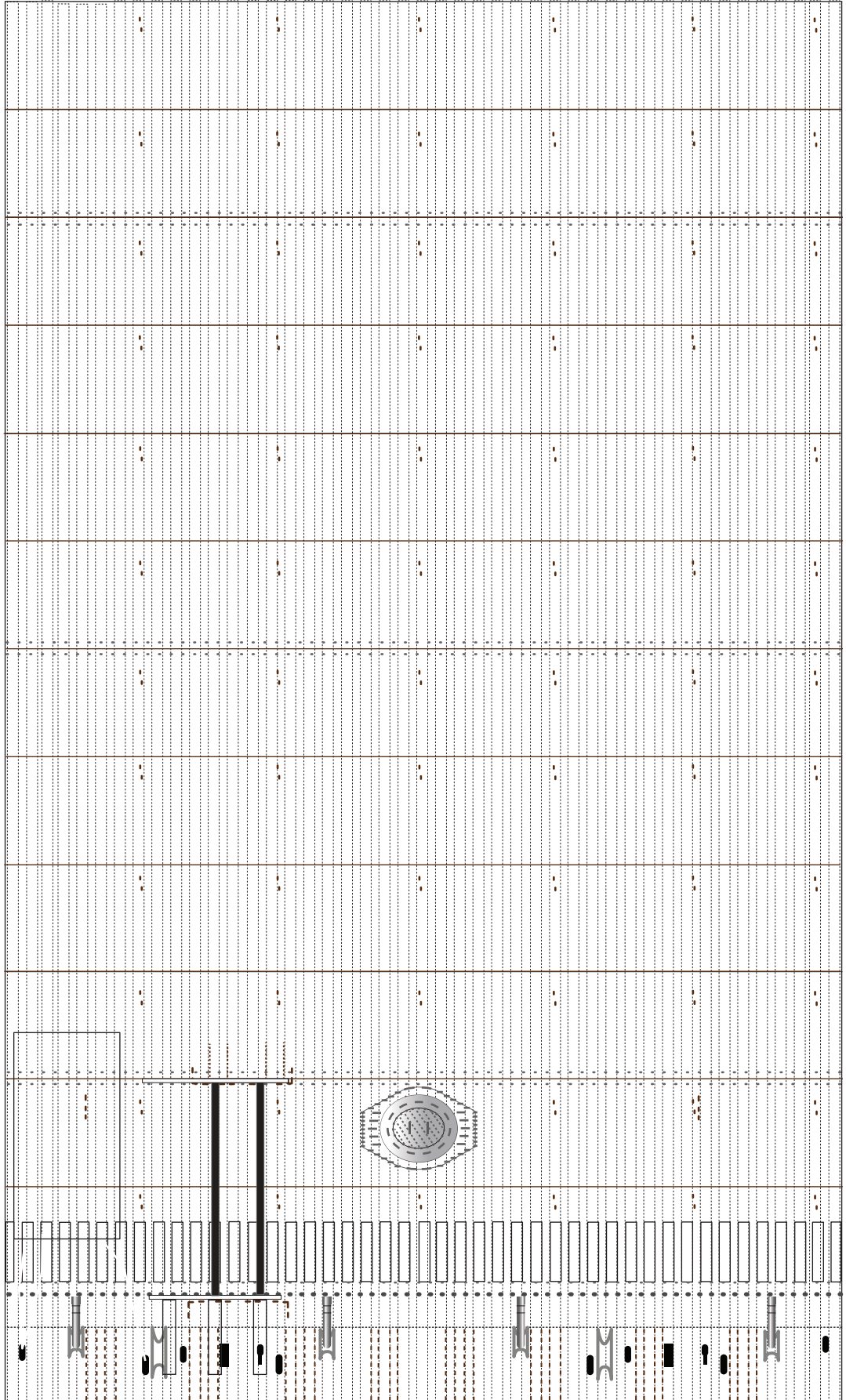
1 cm

1 inch

SpaceX BN3

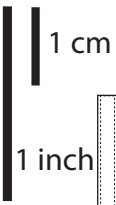
Print on metallic paper
on its white side

Belly side bottom





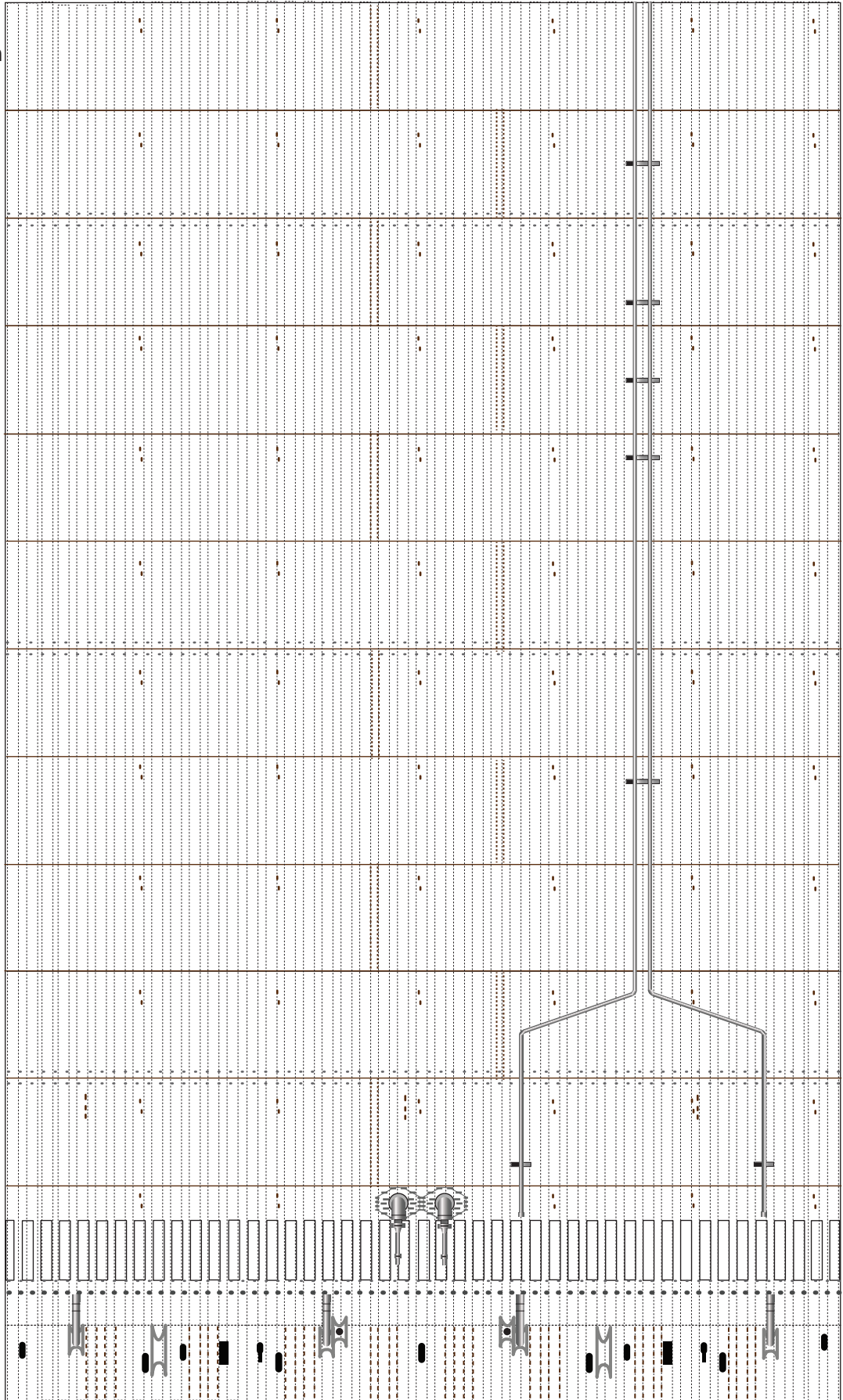
1:100 Scale



SpaceX BN3

Print on metallic paper
on its white side

Back side bottom





1:100 Scale

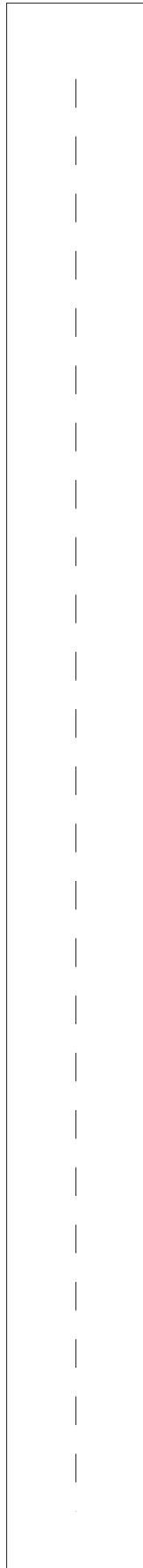
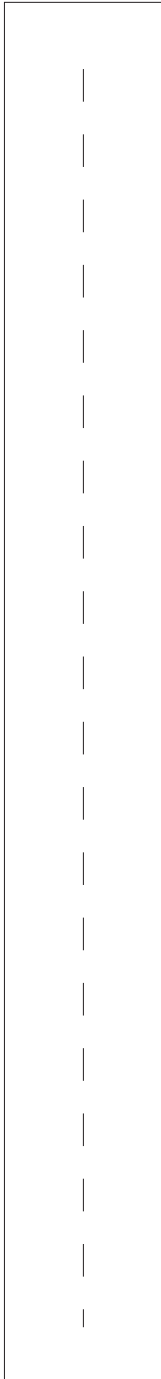
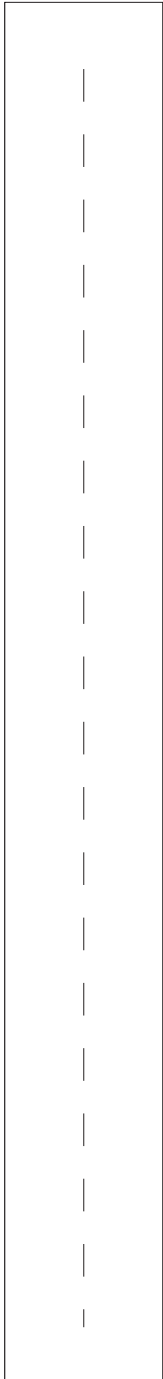
1 cm

1 inch

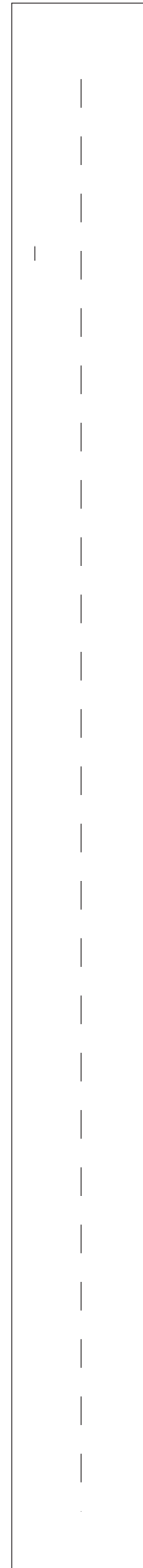
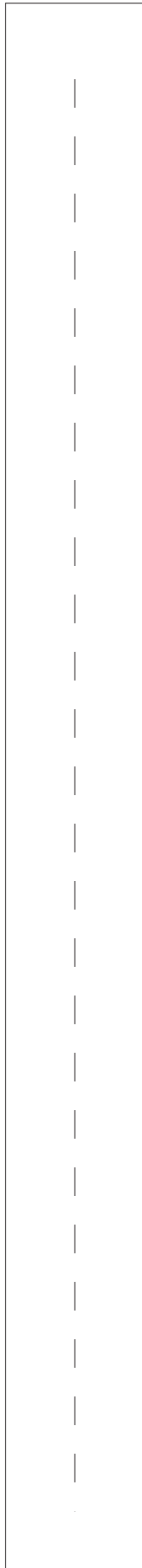
top

SpaceX BN-3

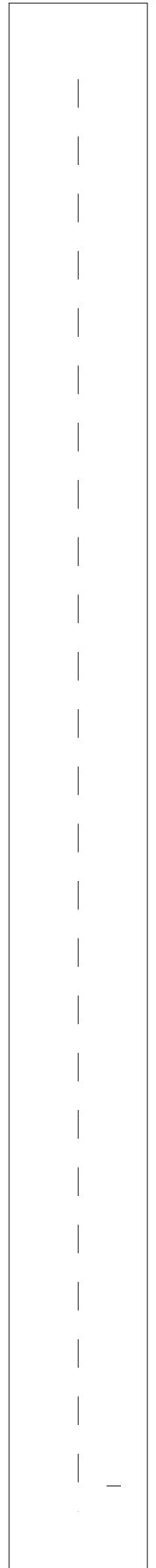
Print on Cardstock (110 lbs)



middle



bottom





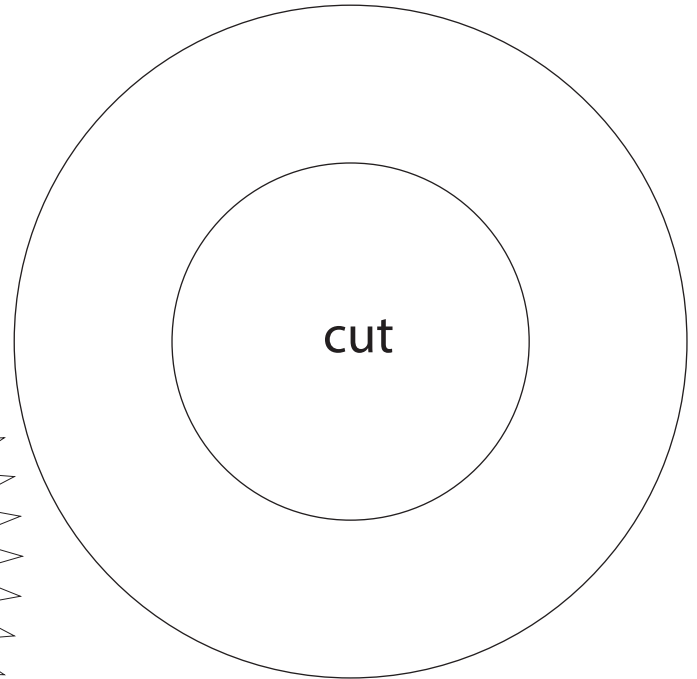
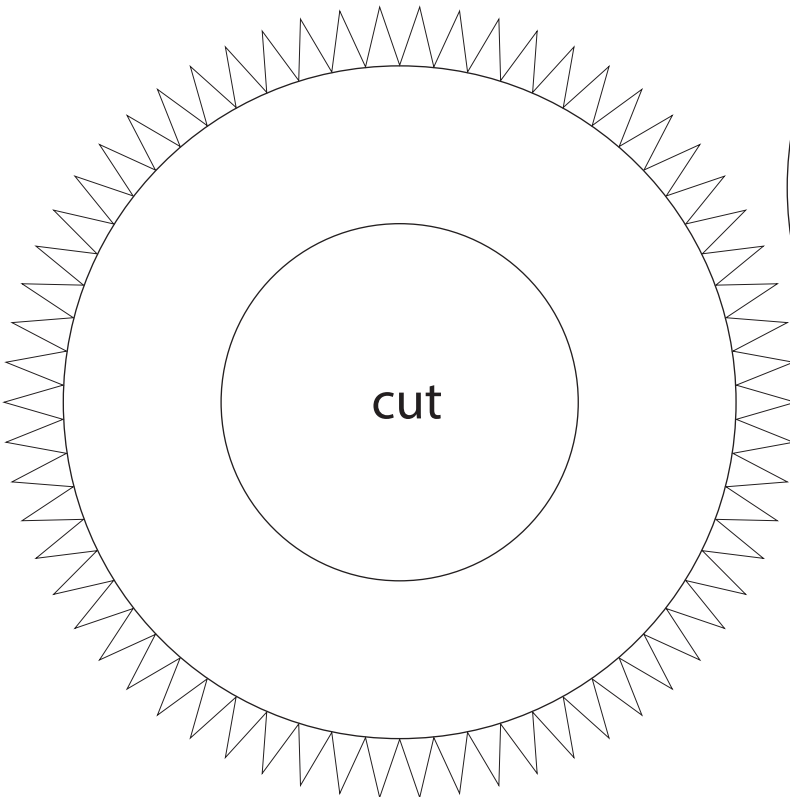
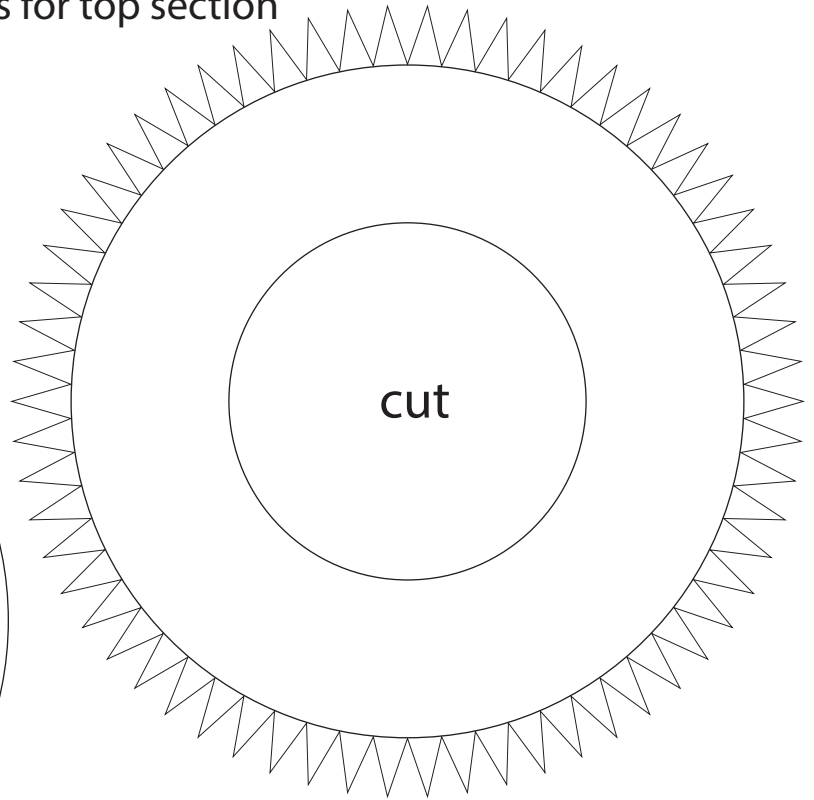
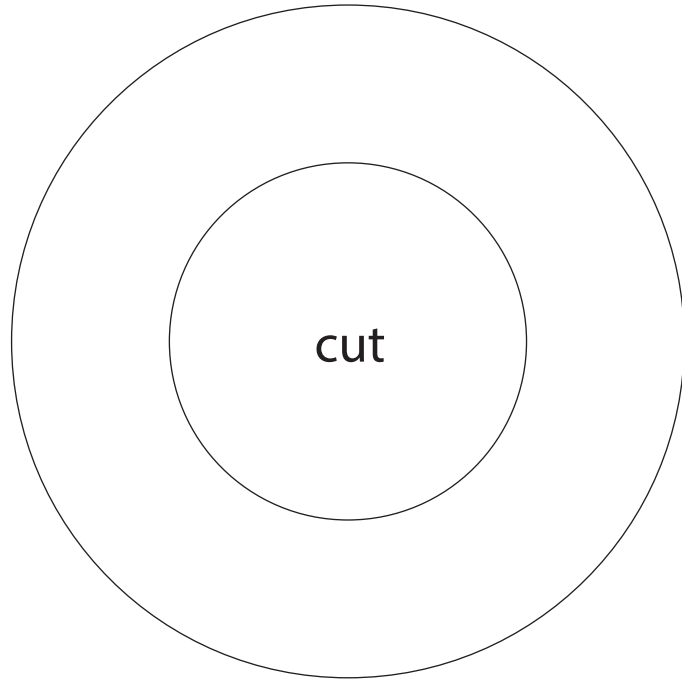
1:100 Scale



SpaceX Starship BN-3

Formers for top section

Print on Cardstock (110 lbs)



IMPORTANT
Top former is glued 42 mm from top edge of top booster section.
Bottom former is glued 20 mm from bottom edge of top booster section.



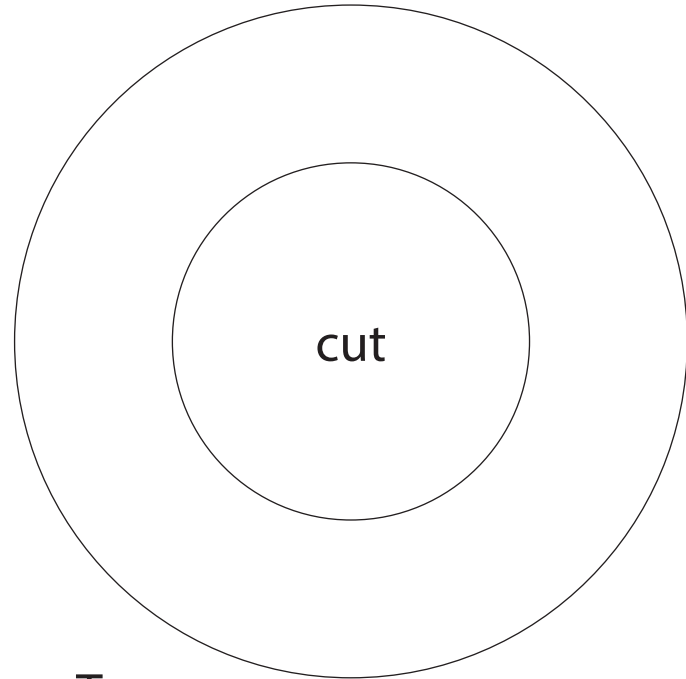
1:100 Scale



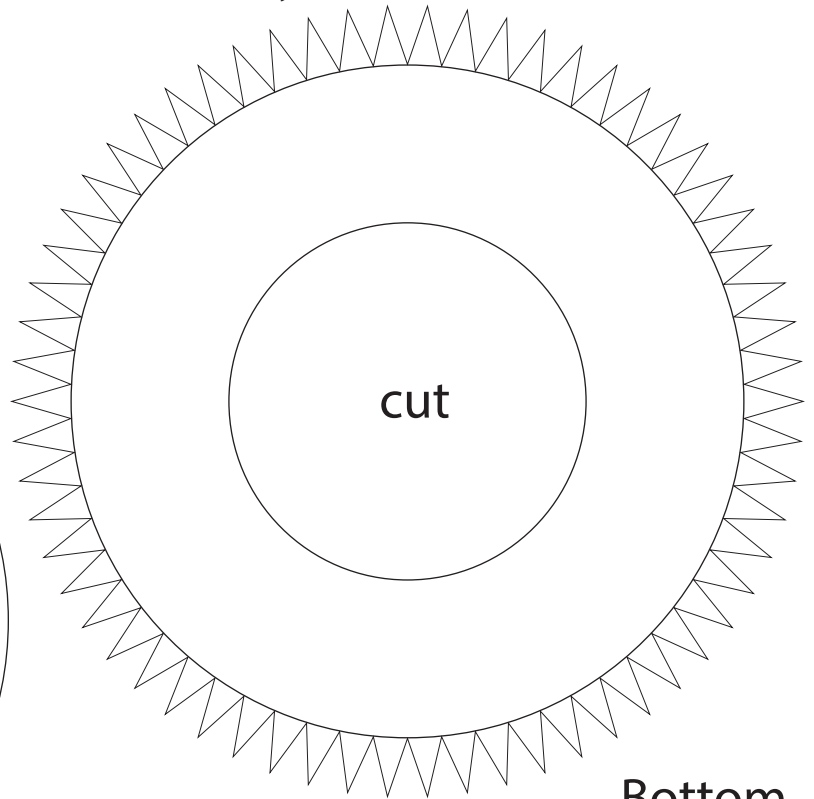
SpaceX Starship BN-3

Print on Cardstock (110 lbs)

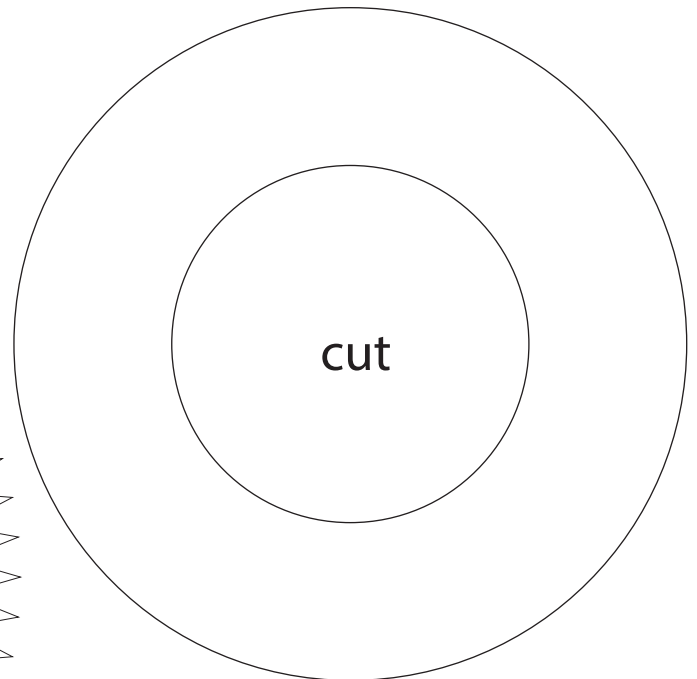
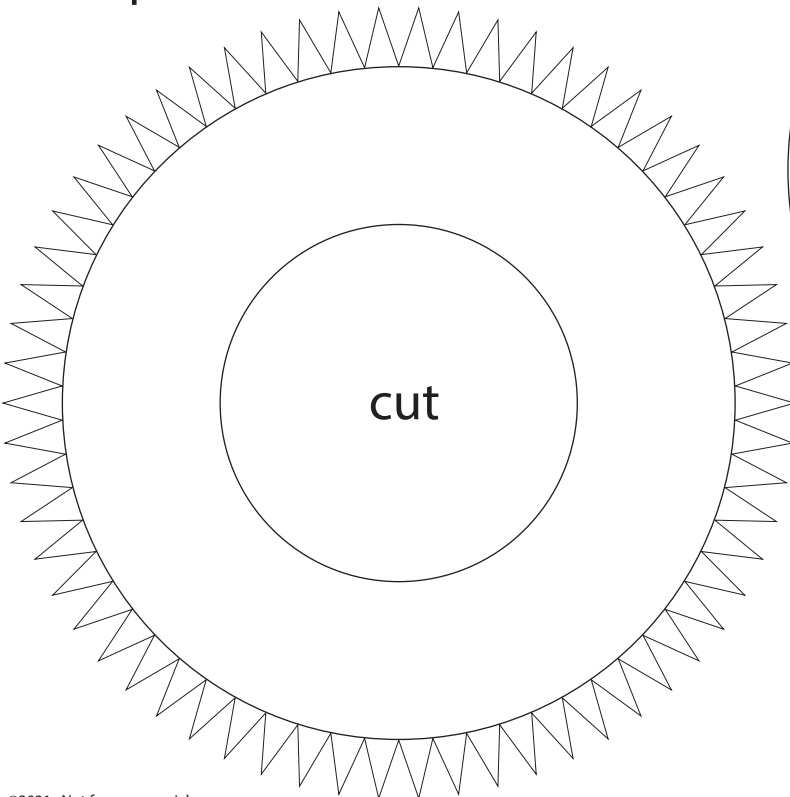
Formers for middle body



Top



Bottom



IMPORTANT

Top former is glued 20 mm from top edge of middle booster section. Bottom former is glued 20 mm from bottom edge of middle booster section.



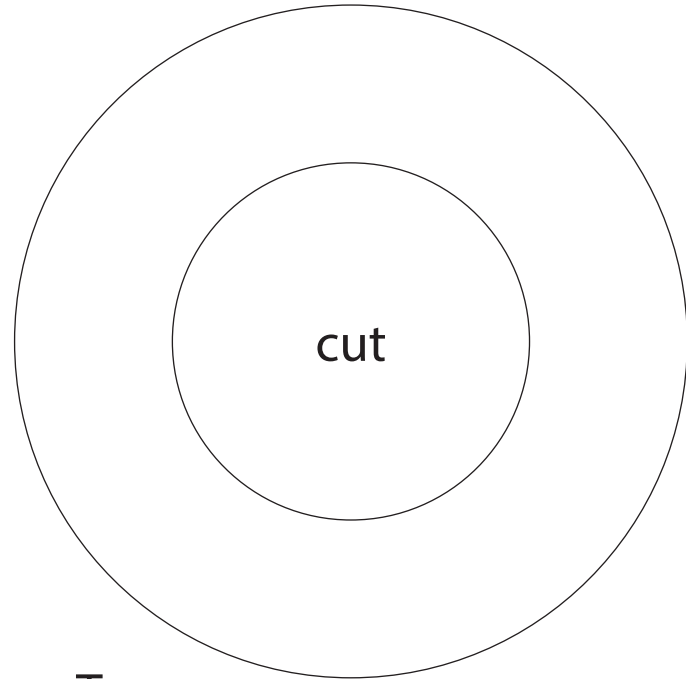
1:100 Scale



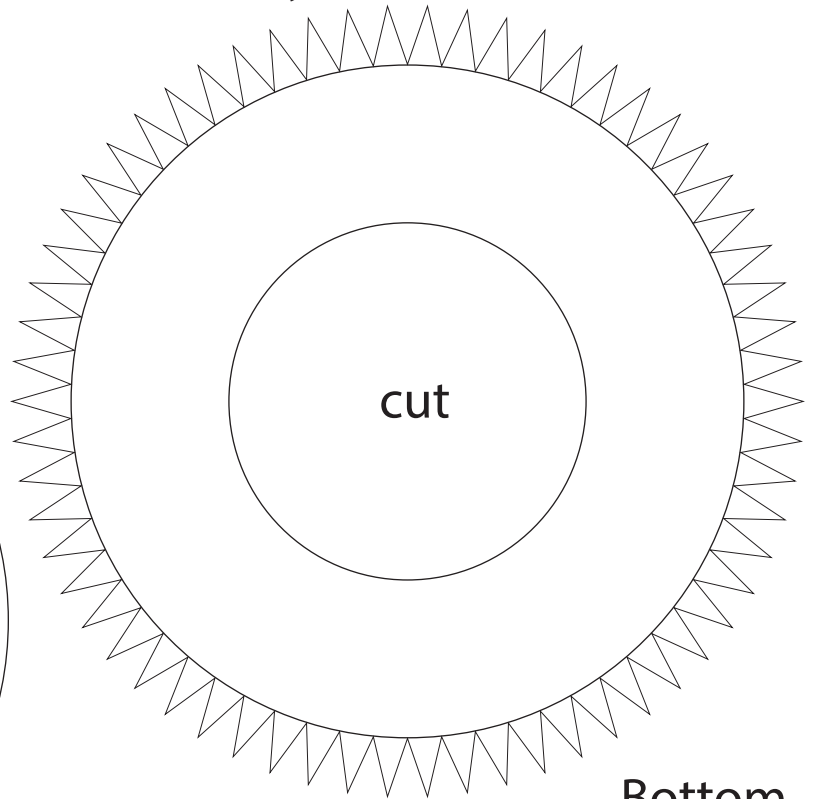
SpaceX Starship BN-3

Print on Cardstock (110 lbs)

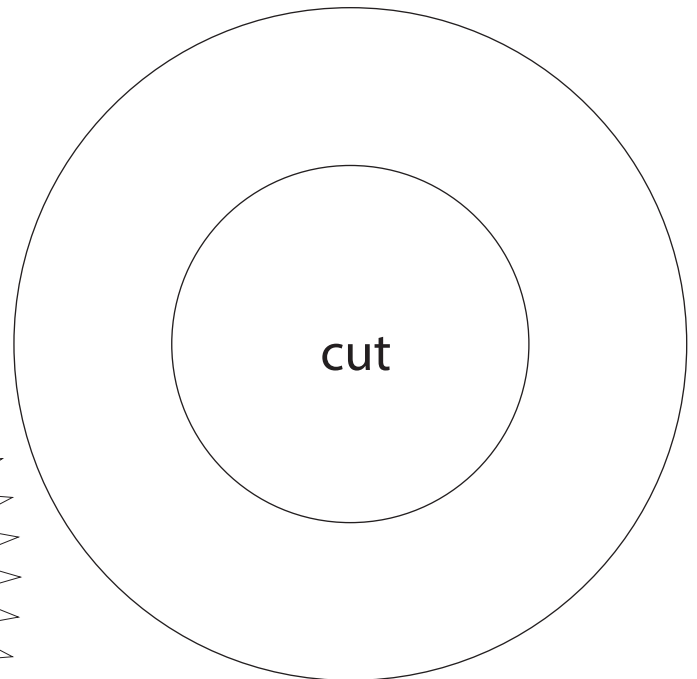
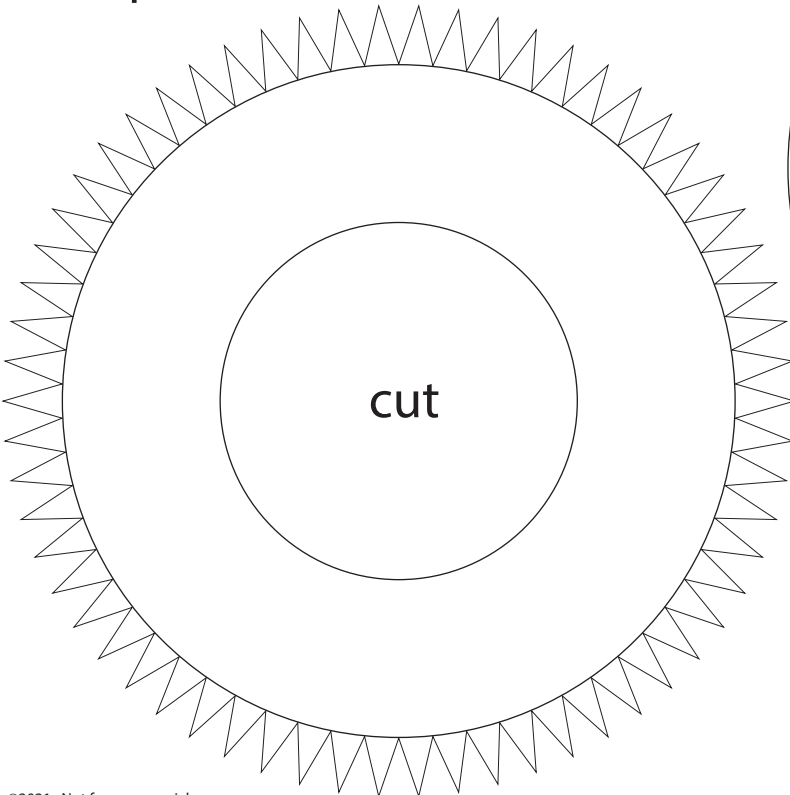
Formers for bottom body



Top



Bottom



IMPORTANT

Top former is glued 20 mm from top edge of bottom booster section. Bottom former is glued 19 mm from bottom edge of bottom booster section.



1 cm

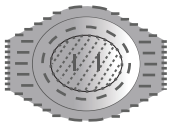
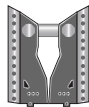
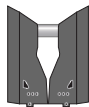
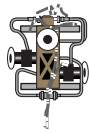
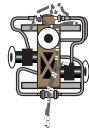
1 inch

1:100 Scale

back

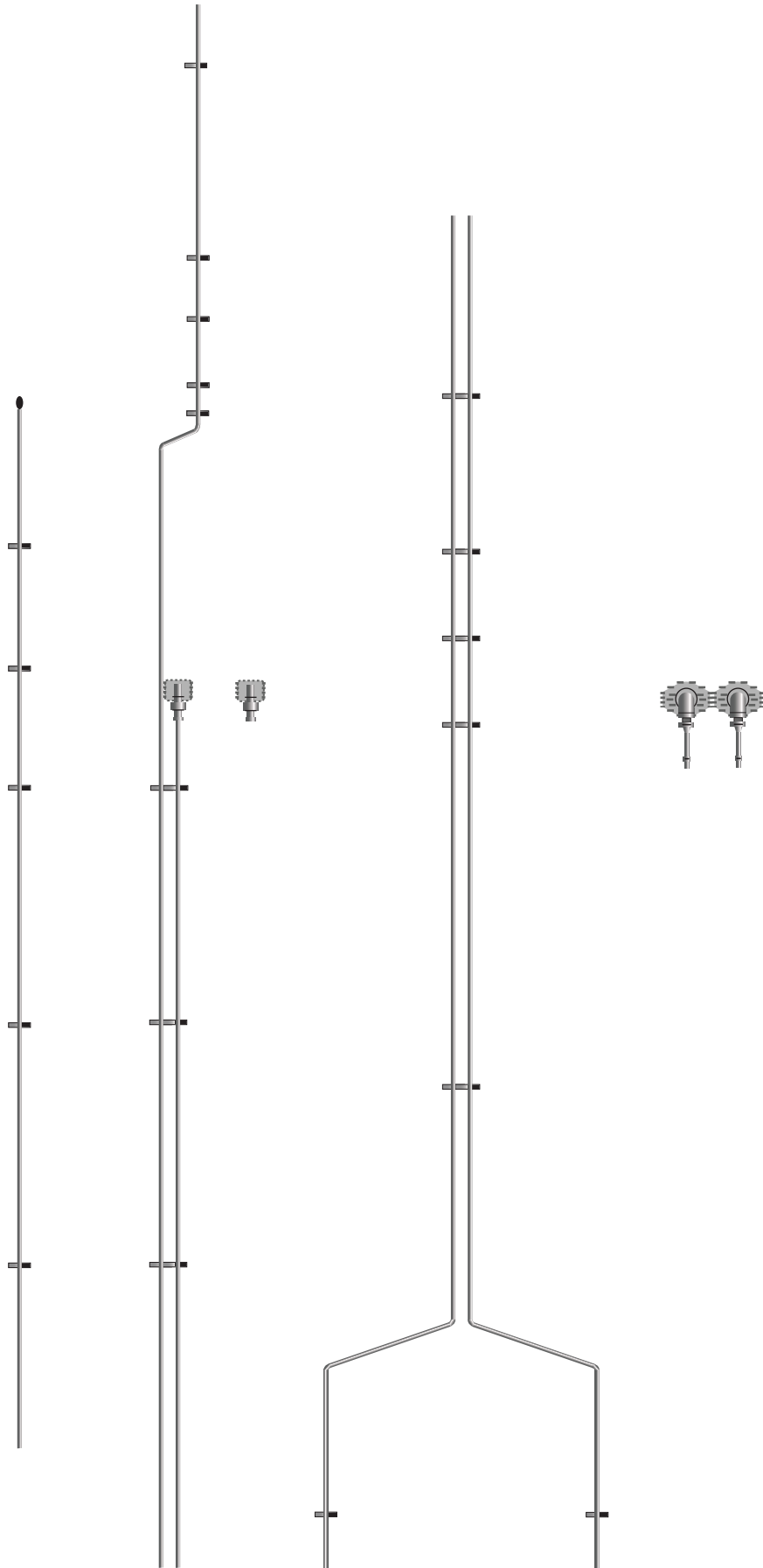


front



SpaceX SuperHeavy BN-3

Print on cardstock





1 cm

1 inch

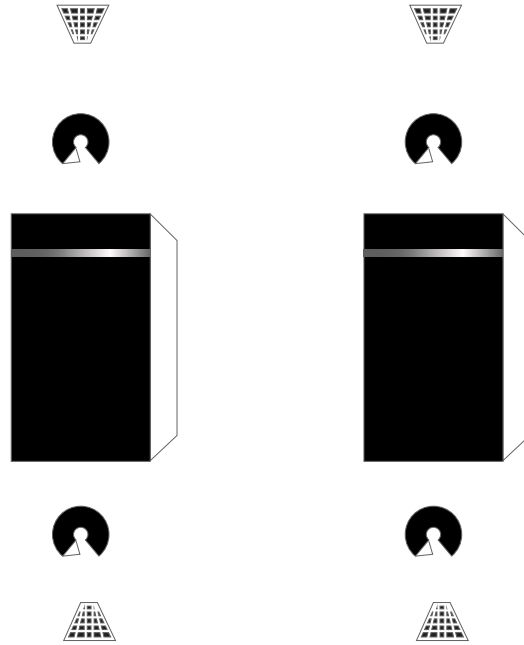
1:100 Scale

SpaceX BN3

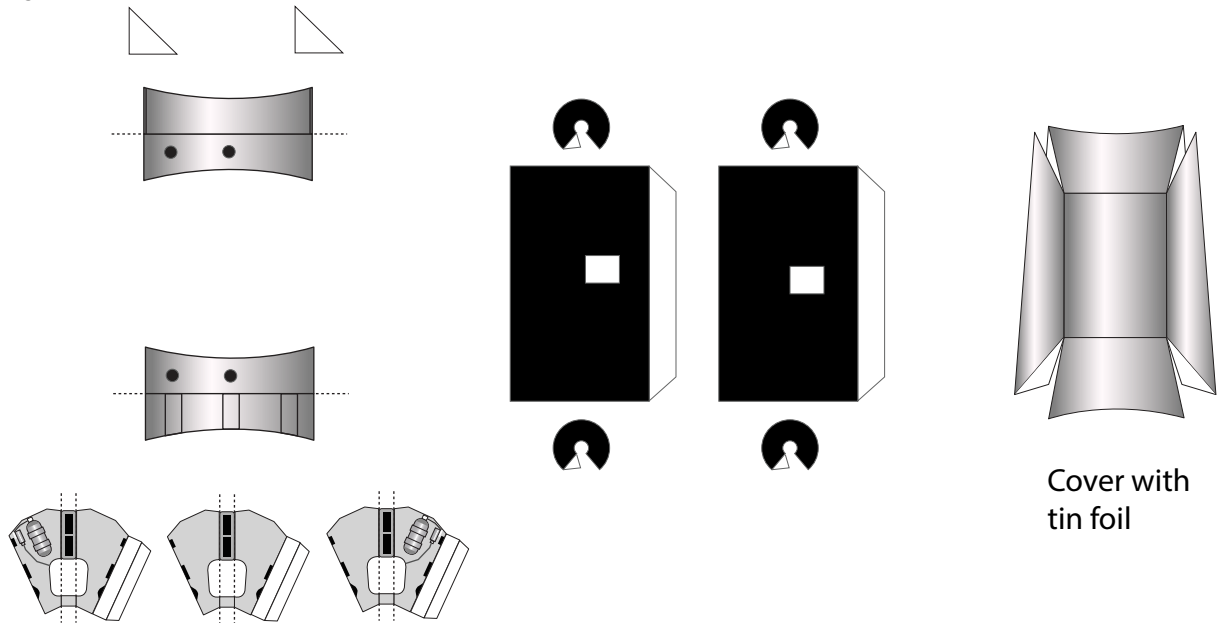
Print on Cardstock (110 lbs)

COPVs

Upper dome
COPVs



External
COPVs



Cover with
tin foil



1 cm

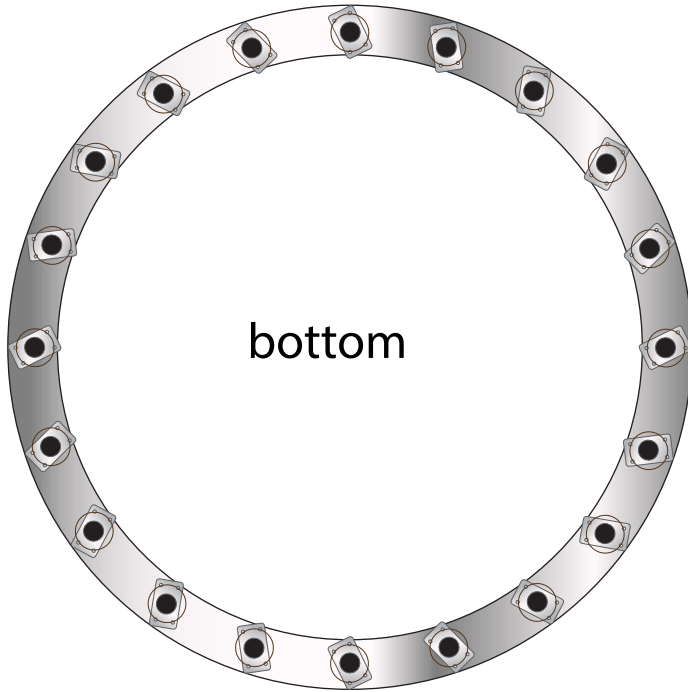
1 inch

1:100 Scale

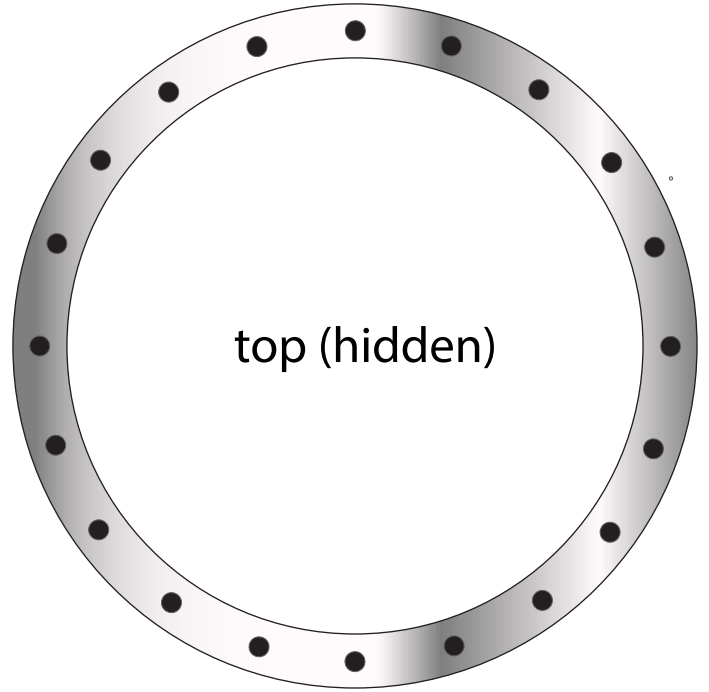
SpaceX SuperHeavy

Print on Cardstock (110 lbs)

Outer Raptor ring

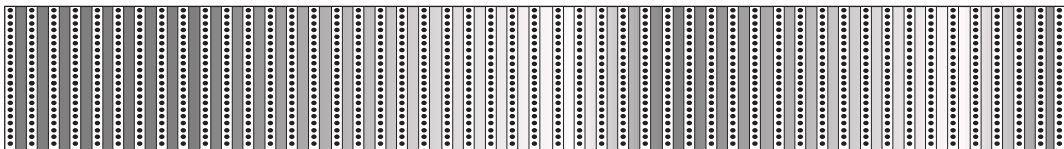
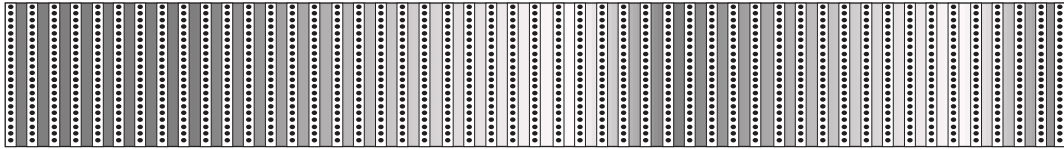


bottom



top (hidden)

Engine section interior skin





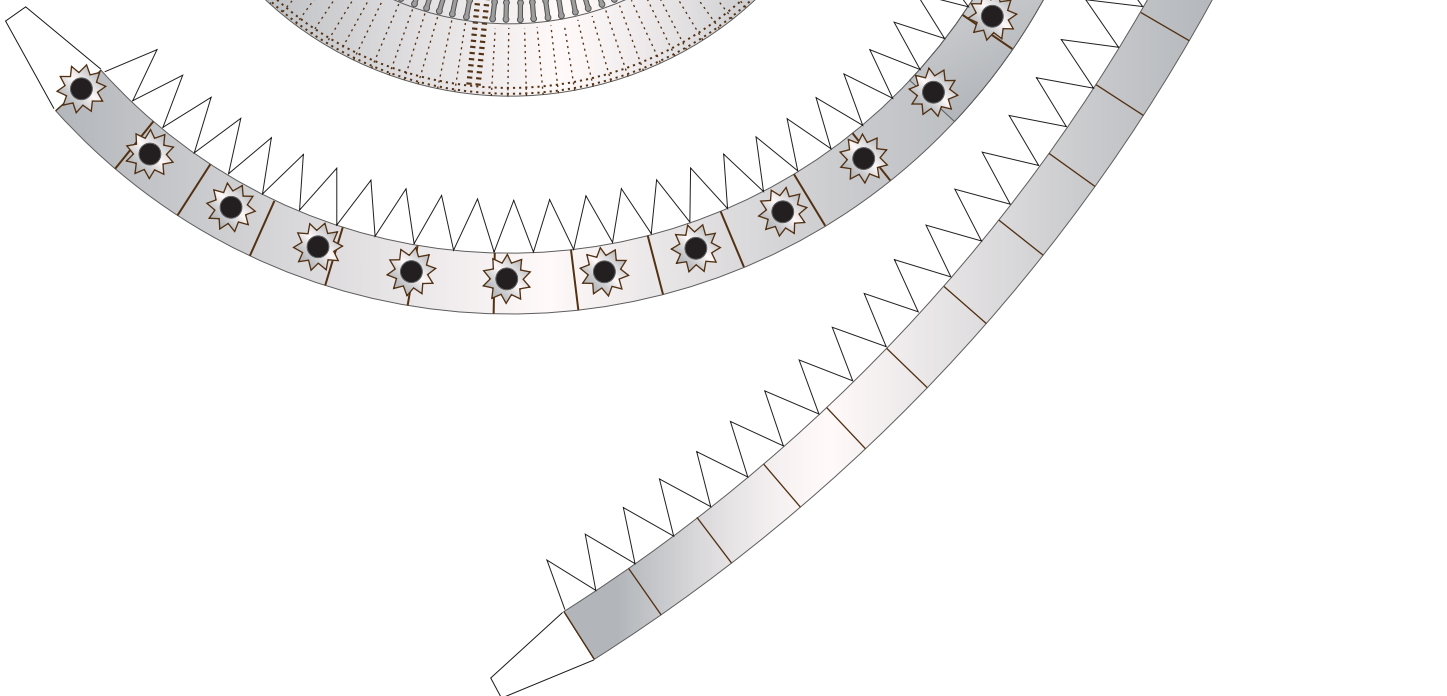
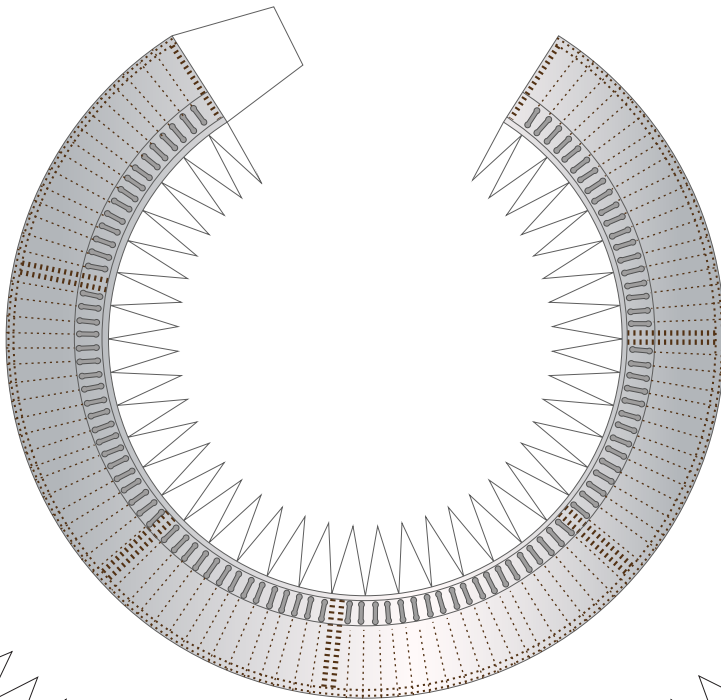
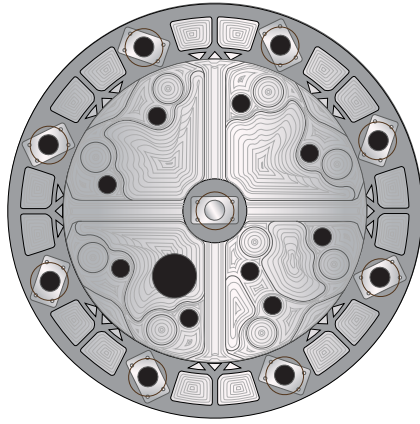
1 cm

1 inch

1:100 Scale

SuperHeavy Bulkhead

Print on Cardstock (110 lbs)





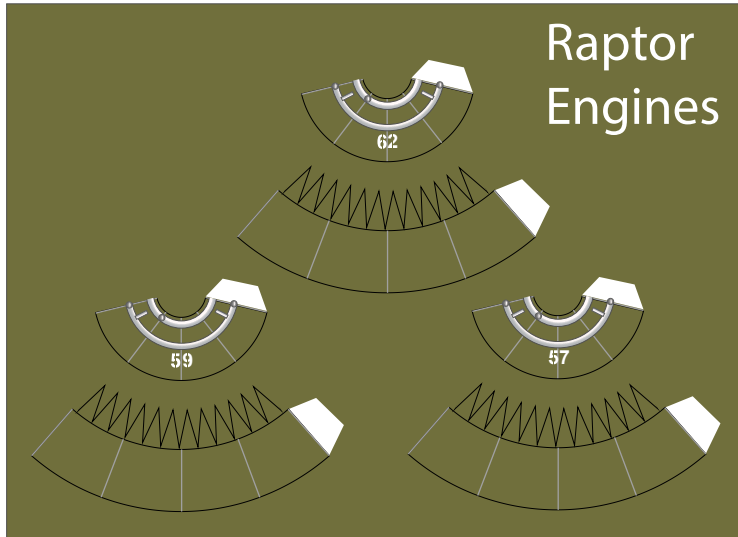
1 cm

1 inch

1:100 Scale

BN3 Raptors

Print on cardstock (110 lbs)



Raptor Engines

