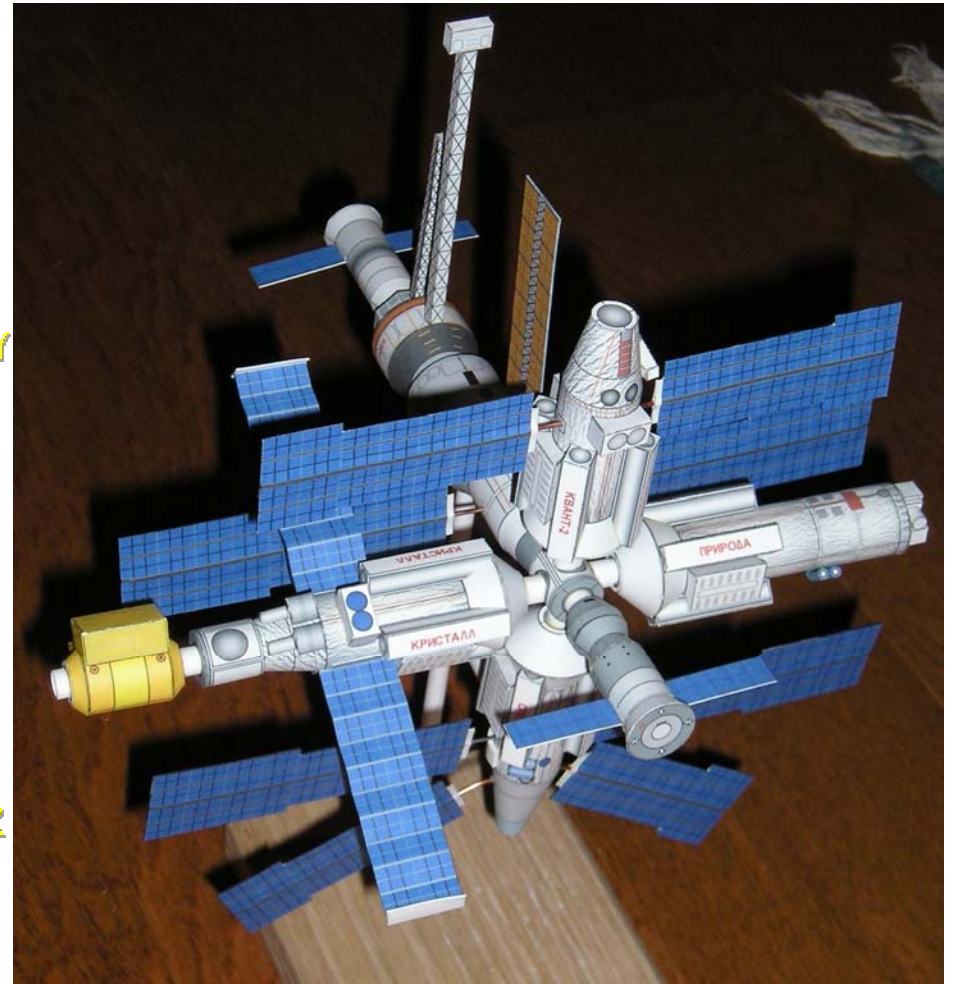
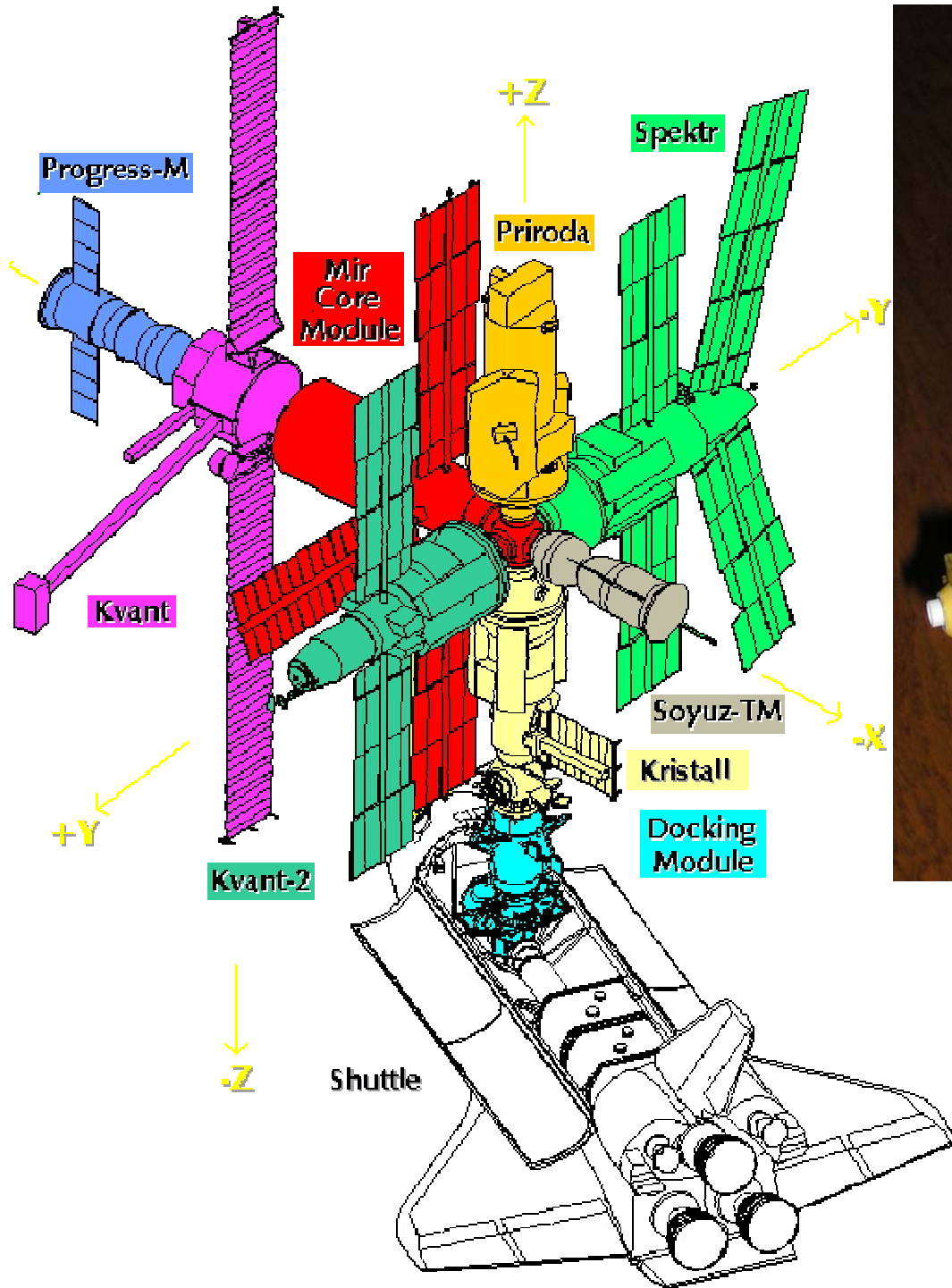


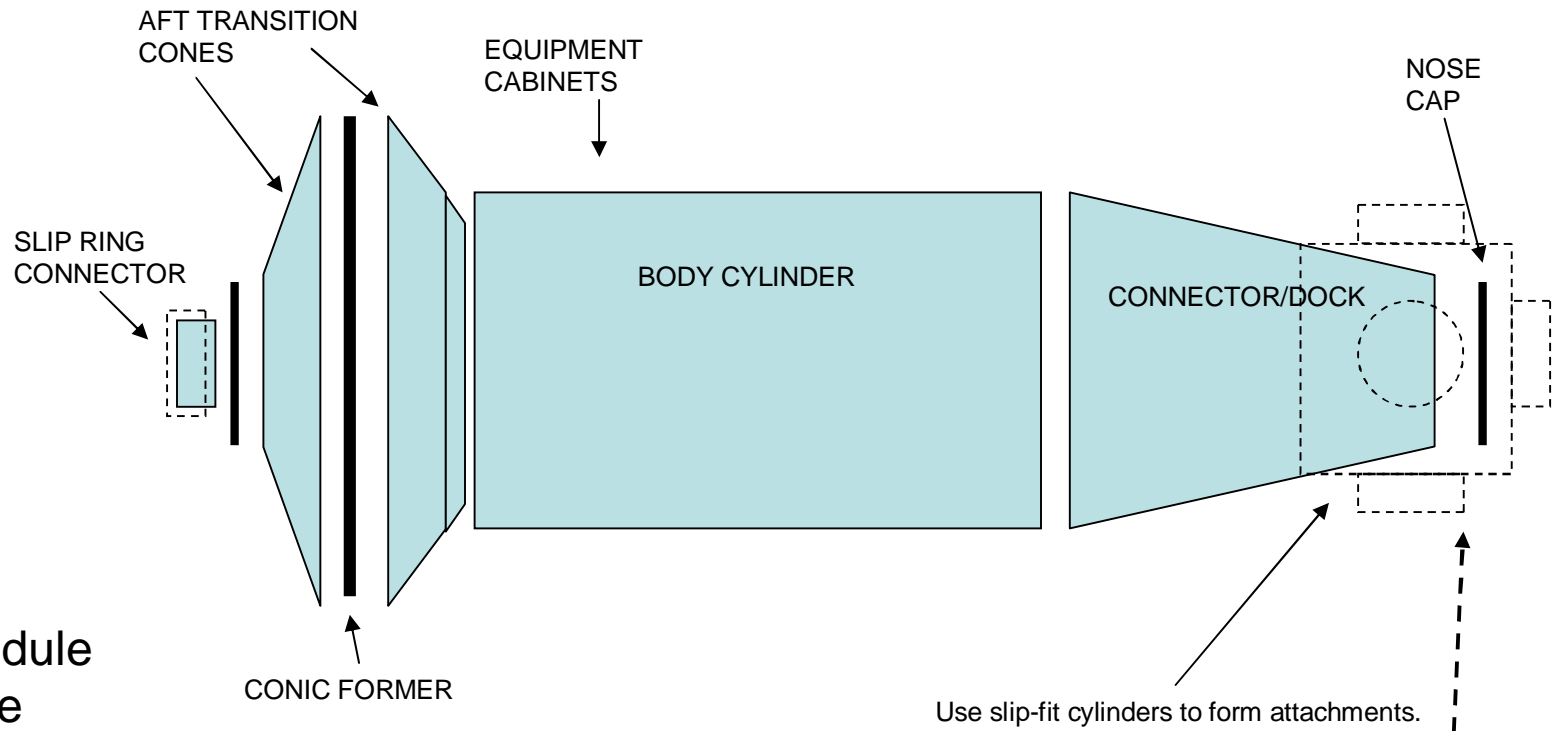
MIR Space Station – learning to build and live in space

1:144 scale

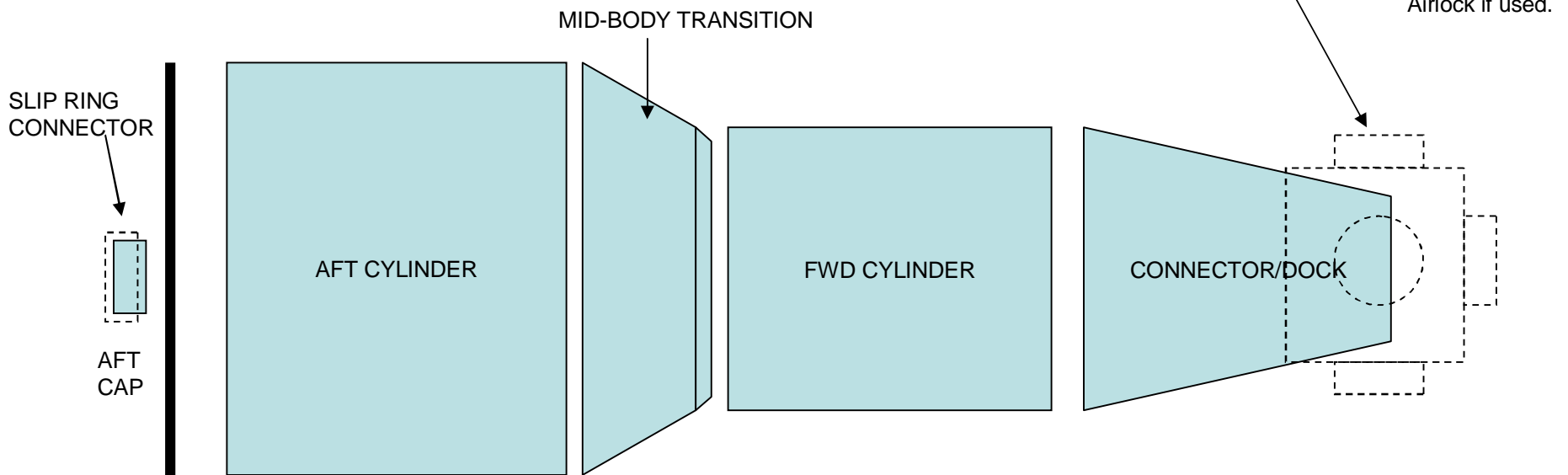
The first element of the Mir space station was launched by the USSR in 1986. Over the next ten years, six more modules were launched to complete the station. After the fall of the Soviet Union, the last three modules were launched by Russia with assistance and funding from the US-NASA. In November 1995, the US space shuttle Atlantis docked with Mir in the second joint US-Russian space visit (first was the Apollo-Soyuz test project in 1975). After 15 years in space, Mir was de-orbited and reentered the atmosphere on 23 March, 2001. Over its lifetime, Mir hosted 102 astronauts and cosmonauts. Normal crew complement was 2-3 people. Investigations performed aboard the station included space technology experiments, remote sensing and environmental monitoring, life science and biological research, astrophysics studies, material processing tests, and medical and biotechnology experiments.



ISS-FGB/UDM
Kvant-2
Priroda
Krystall
Spektr

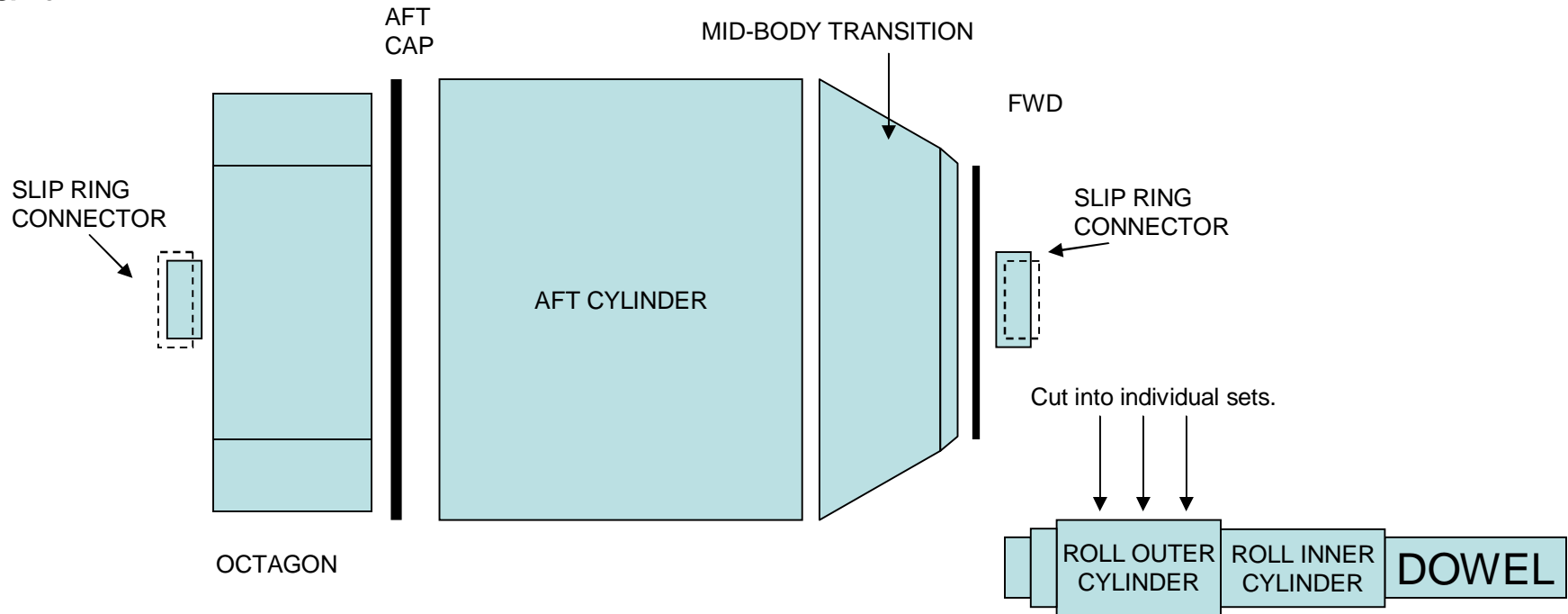


ISS-Service Module
Mir Core Module

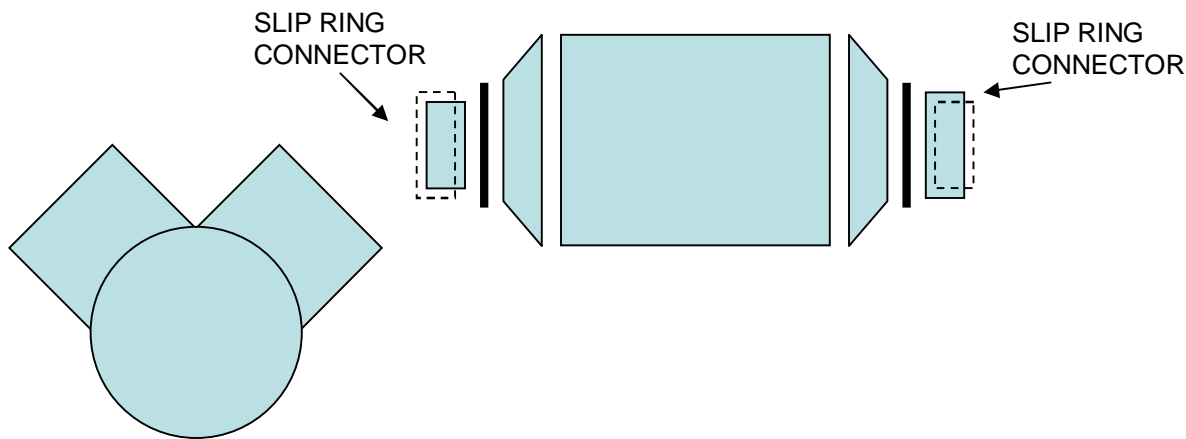


1:80 scale

Kvant

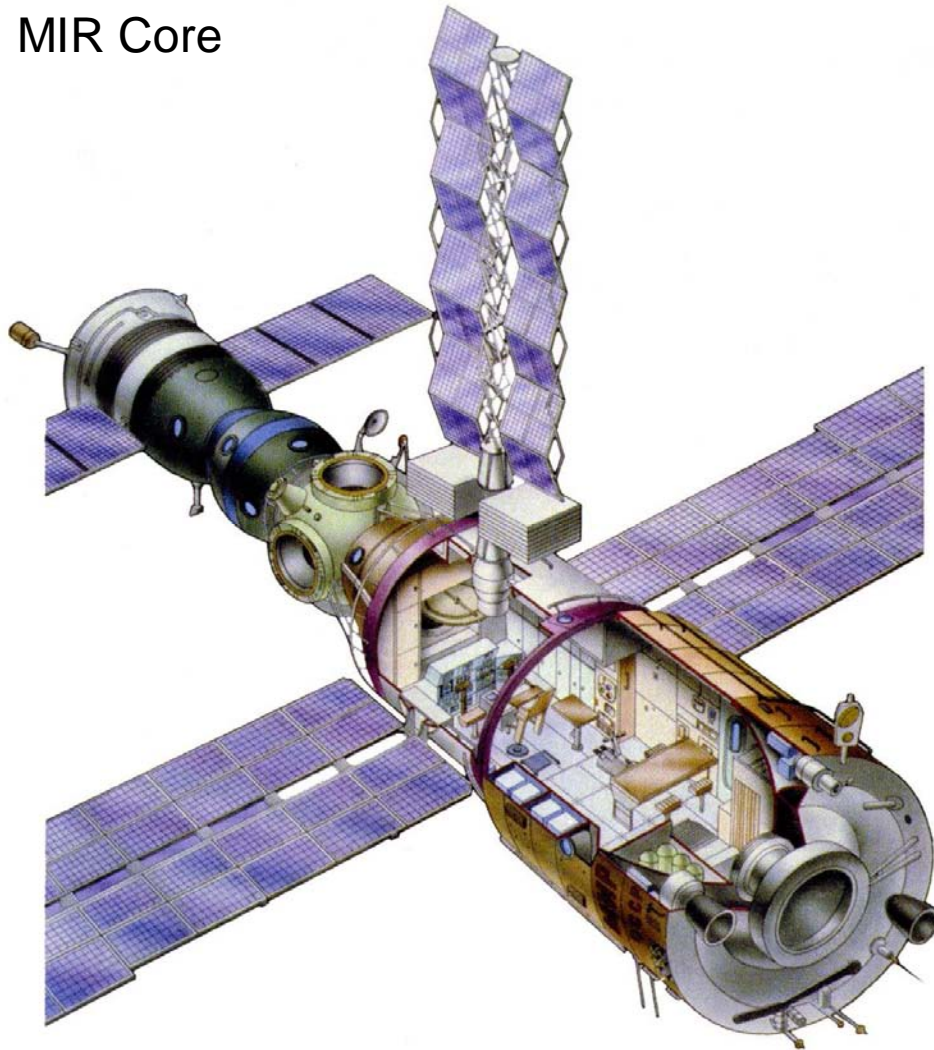


Docking Compartment



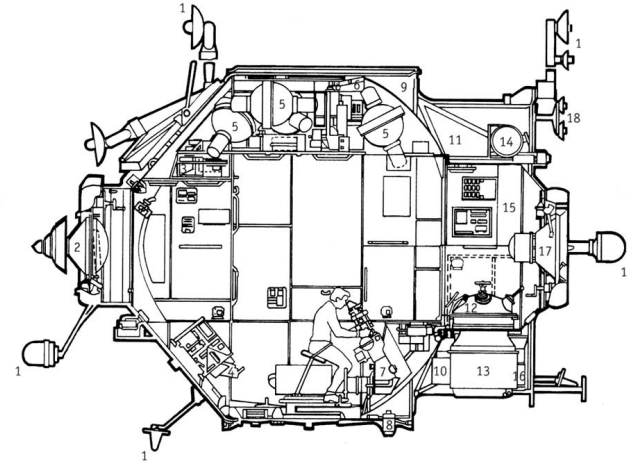
To make the slip rings for docking, first roll one layer of card tightly around a dowel and glue. When dry, roll a second layer tightly over the first and glue, taking care not to glue the layers together. Finally, cut into thin rings and separate. Glue the outer ring to the nose of each module, the inner ring to the base. This will give you larger rings on the docking sections and smaller rings that then plug into them. Soyuz and Progress spacecraft have inner/smaller rings on their noses to plug into the docking ports.

MIR Core

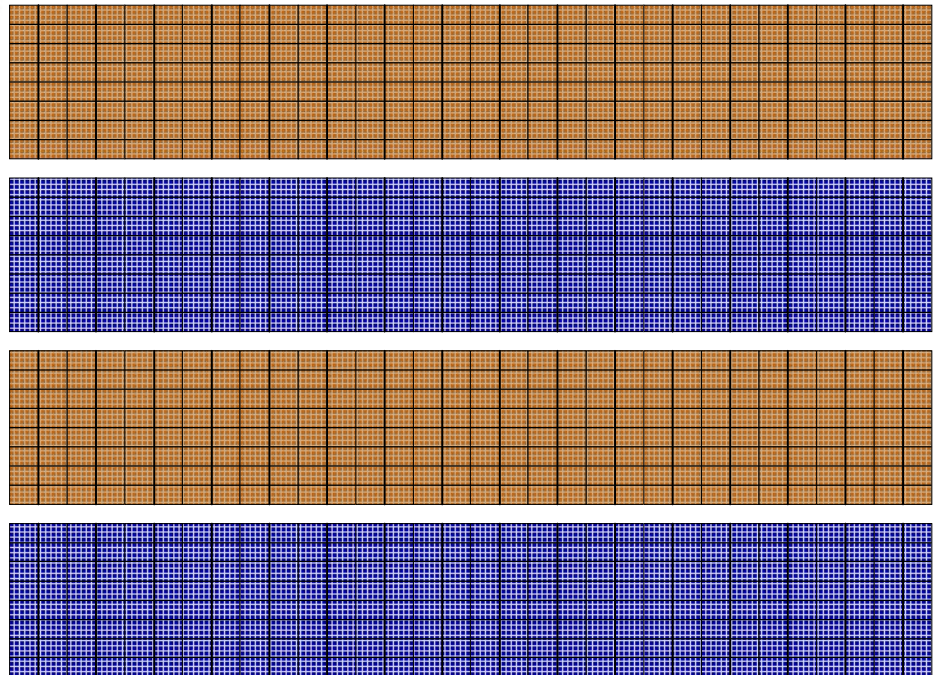


Kvant

Астрофизический модуль "Квант" (37КЭ №166-01)
(на момент запуска – 1987 г.)



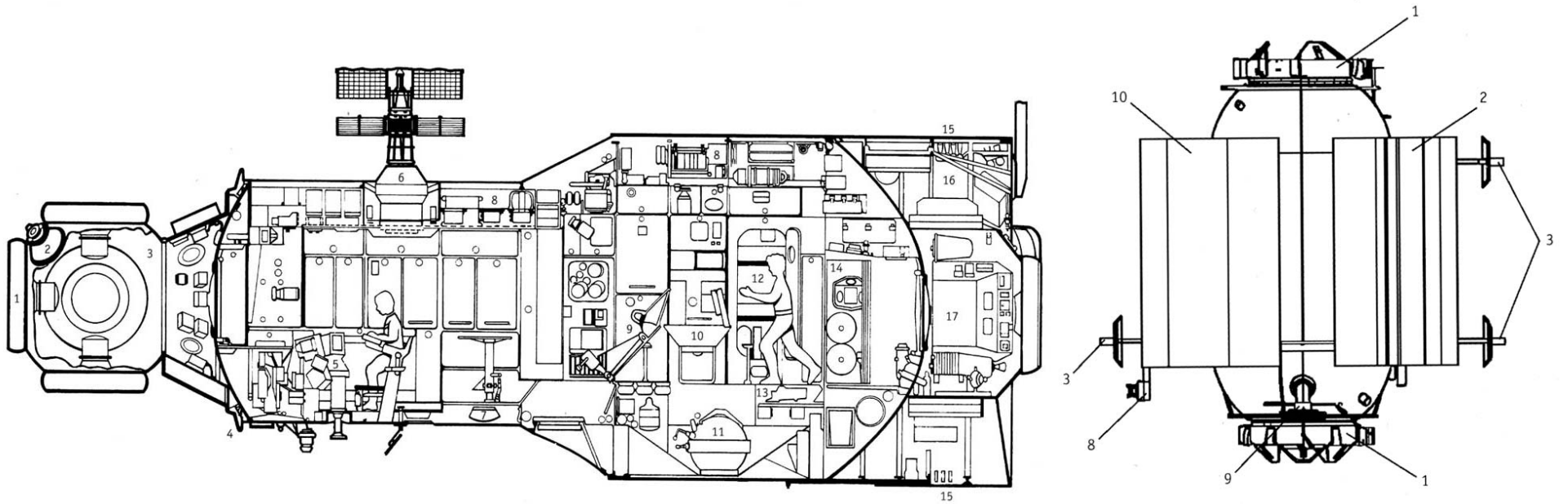
KVANT SOLAR PANELS – Glue back to back, colored side out, sandwich narrow dowel or wire down center of arrays and attach to KVANT cylinder.



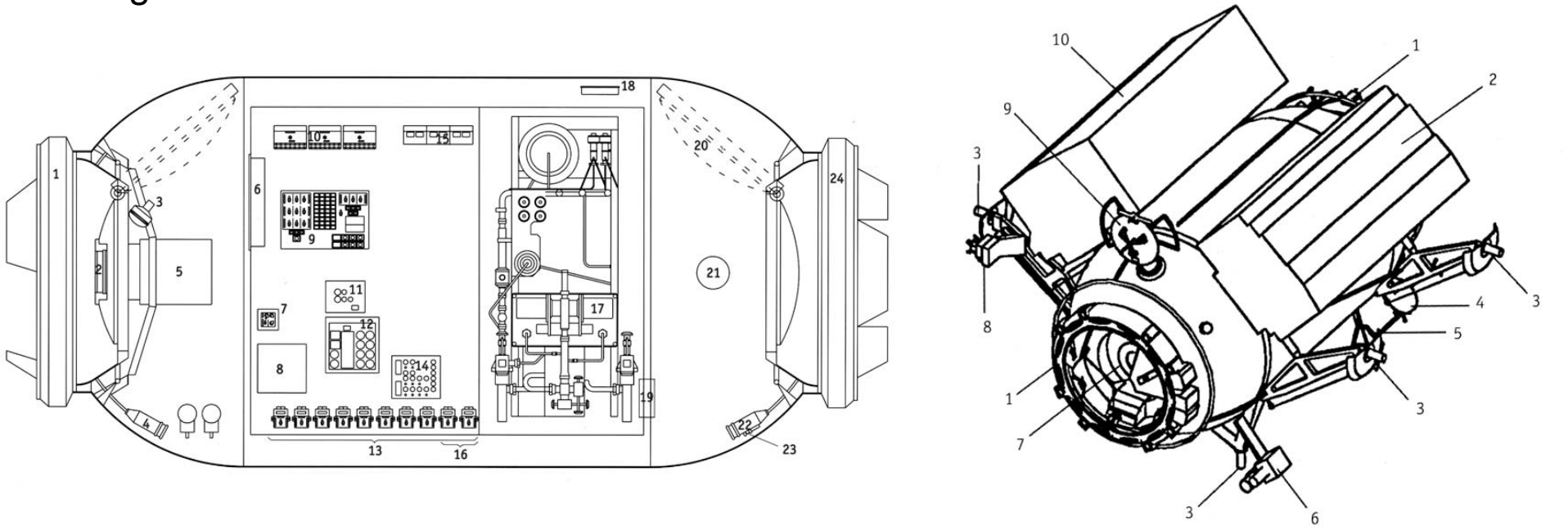
MIR Core

Базовый блок (17КС №127-01)

(на момент запуска – 1986 г.)



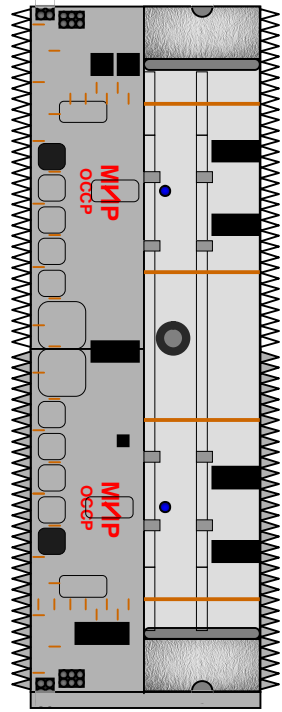
Docking Module



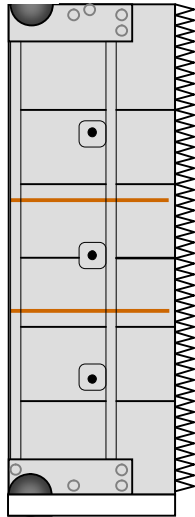
MIR Core

Copyright 2010-John Jogerst. Not for commercial use. For private or educational use only.

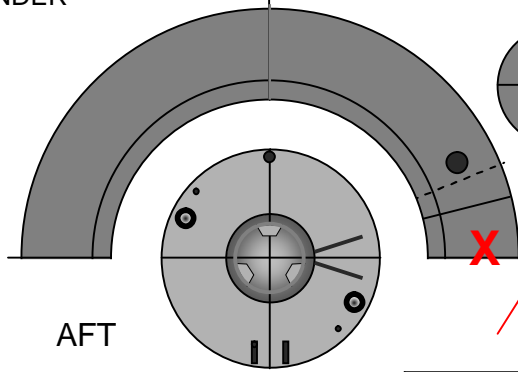
1:144



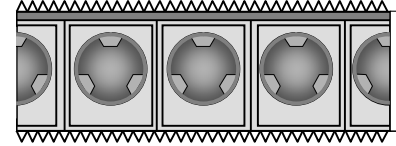
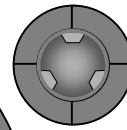
FORWARD CYLINDER



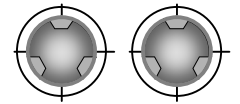
MID-BODY TRANSITION



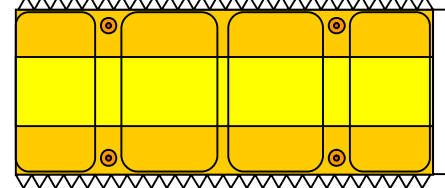
AIRLOCK SECTION



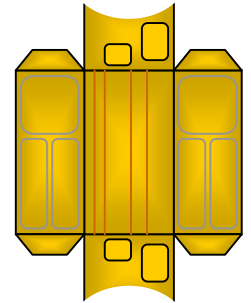
END CAPS



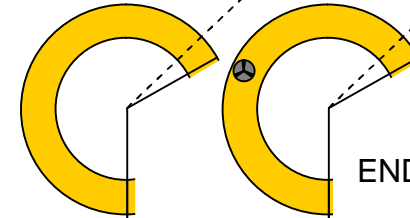
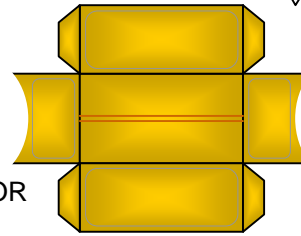
DOCKING COMPARTMENT



BODY CYLINDER

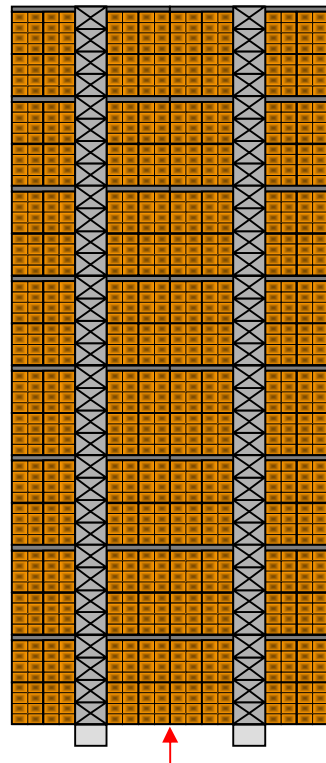


AFT

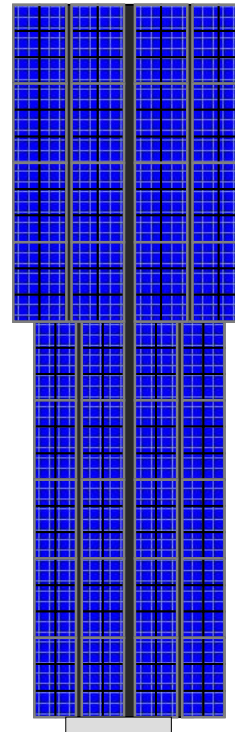
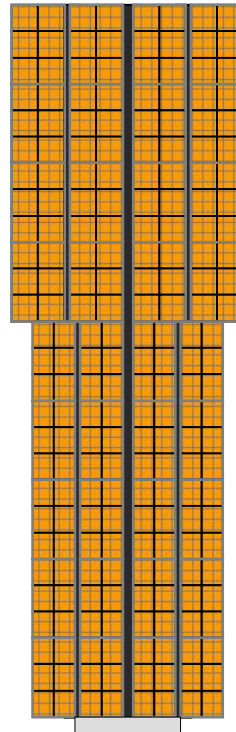


END CONES

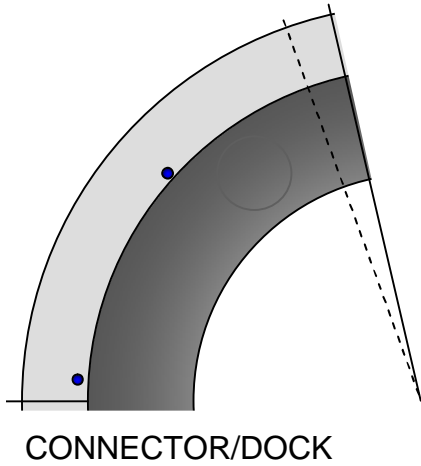
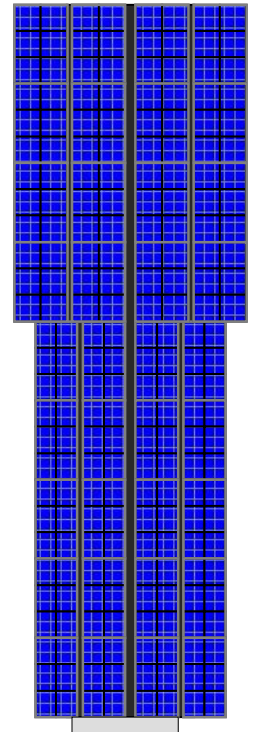
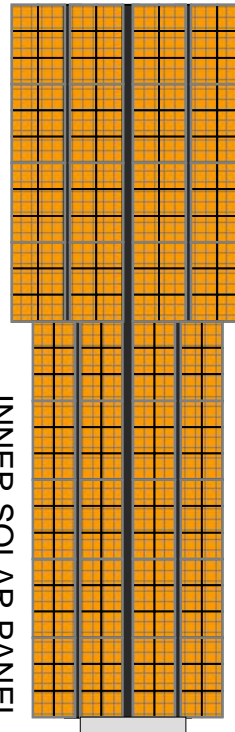
TOP RADIATOR



OUTER SOLAR PANEL

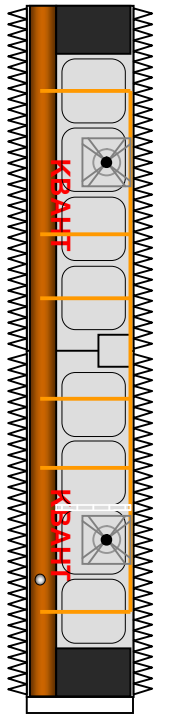


INNER SOLAR PANEL

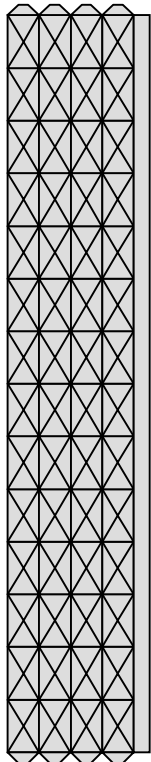


CONNECTOR/DOCK

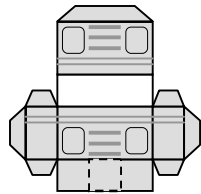
KVANT



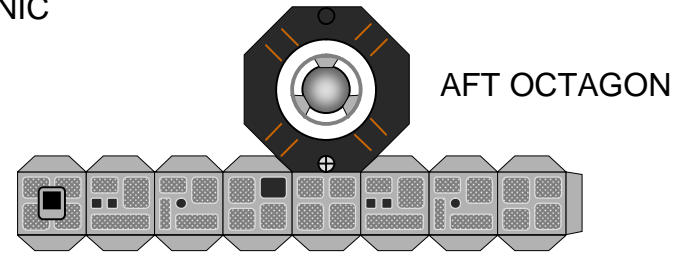
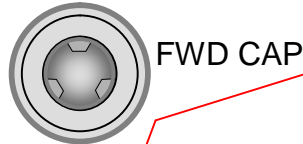
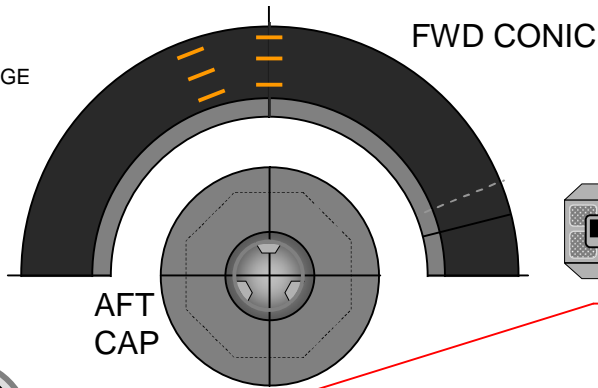
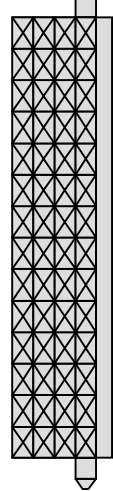
LONG SCIENCE BOOM
Attach to Cylinder



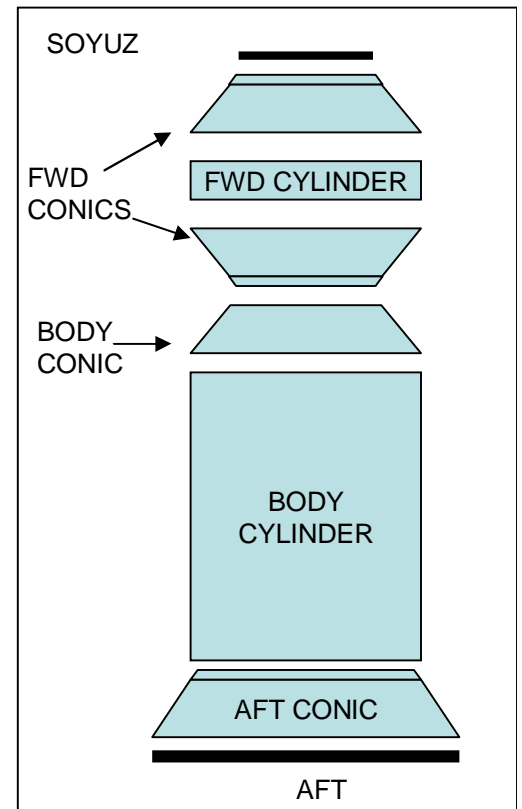
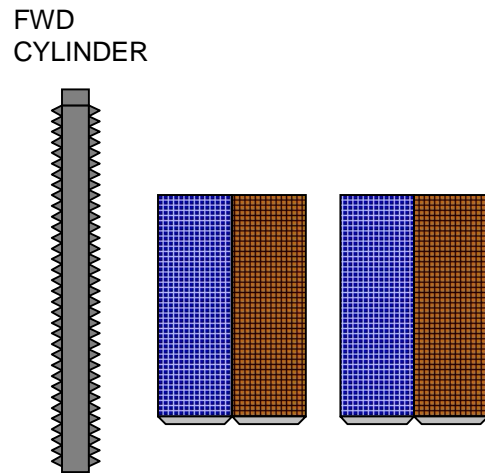
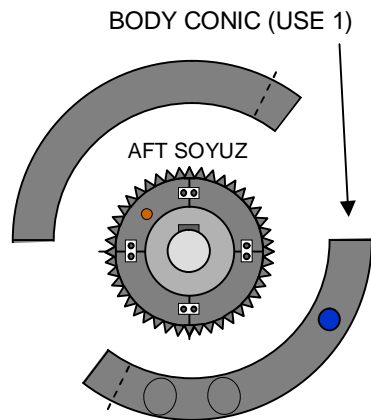
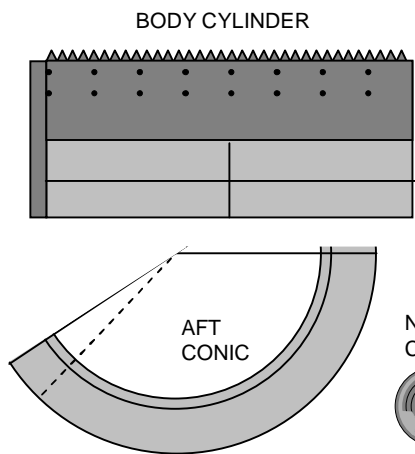
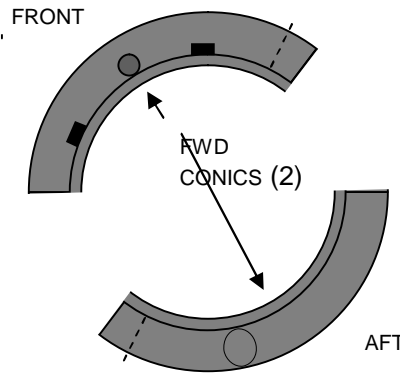
LONG BOOM END PACKAGE



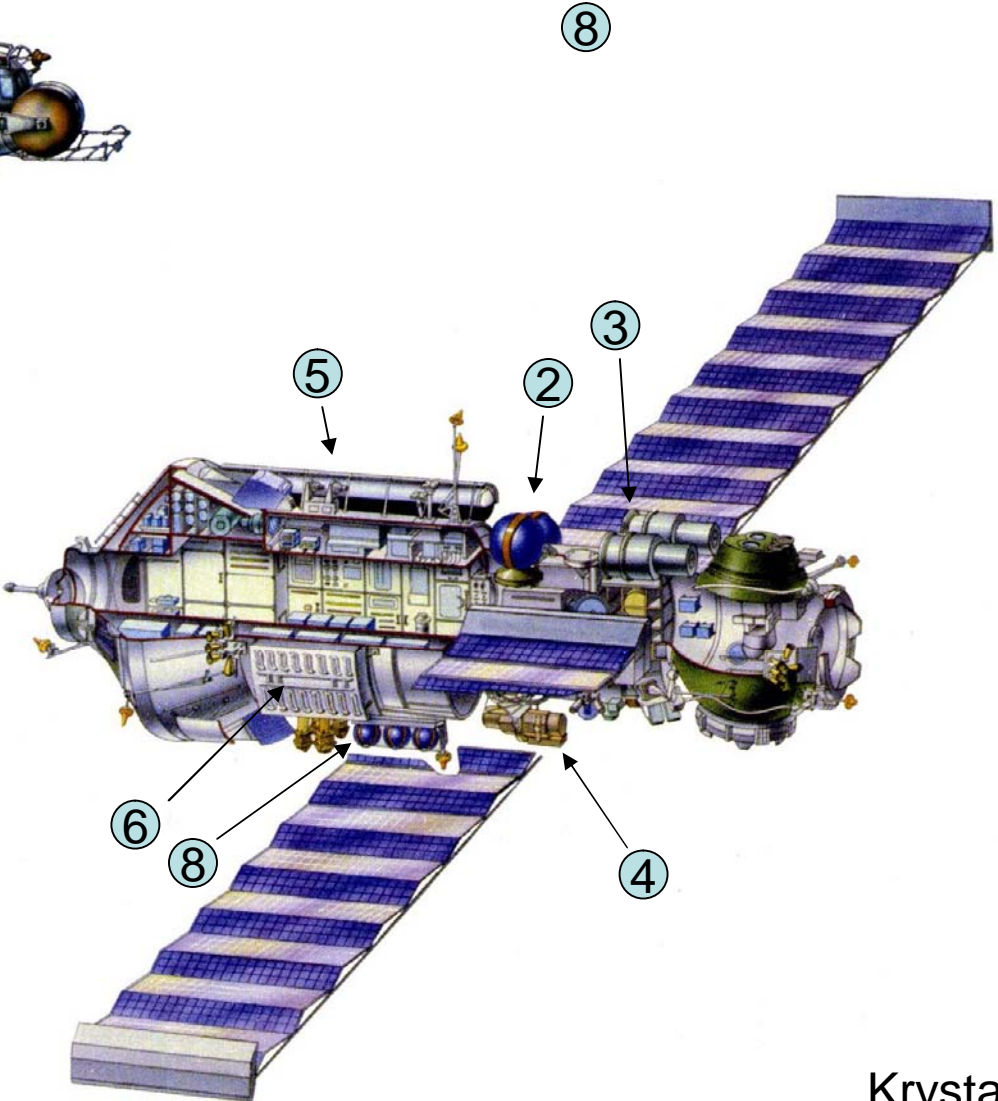
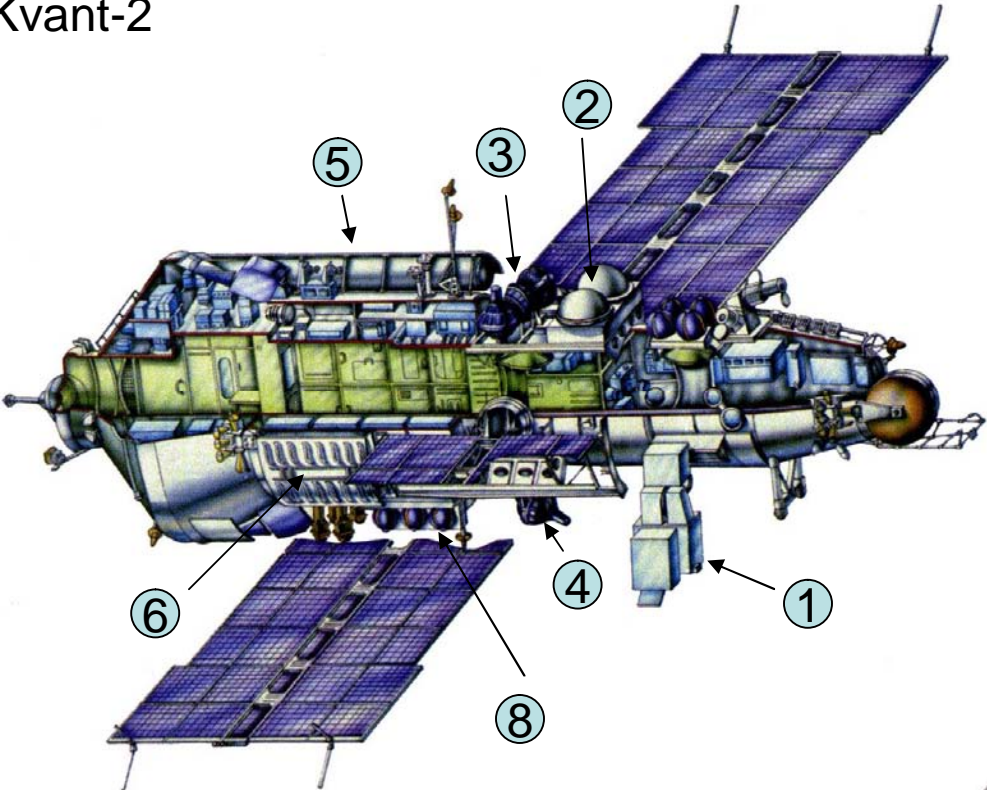
SHORT SCIENCE BOOM
Attach to Octagon



SOYUZ

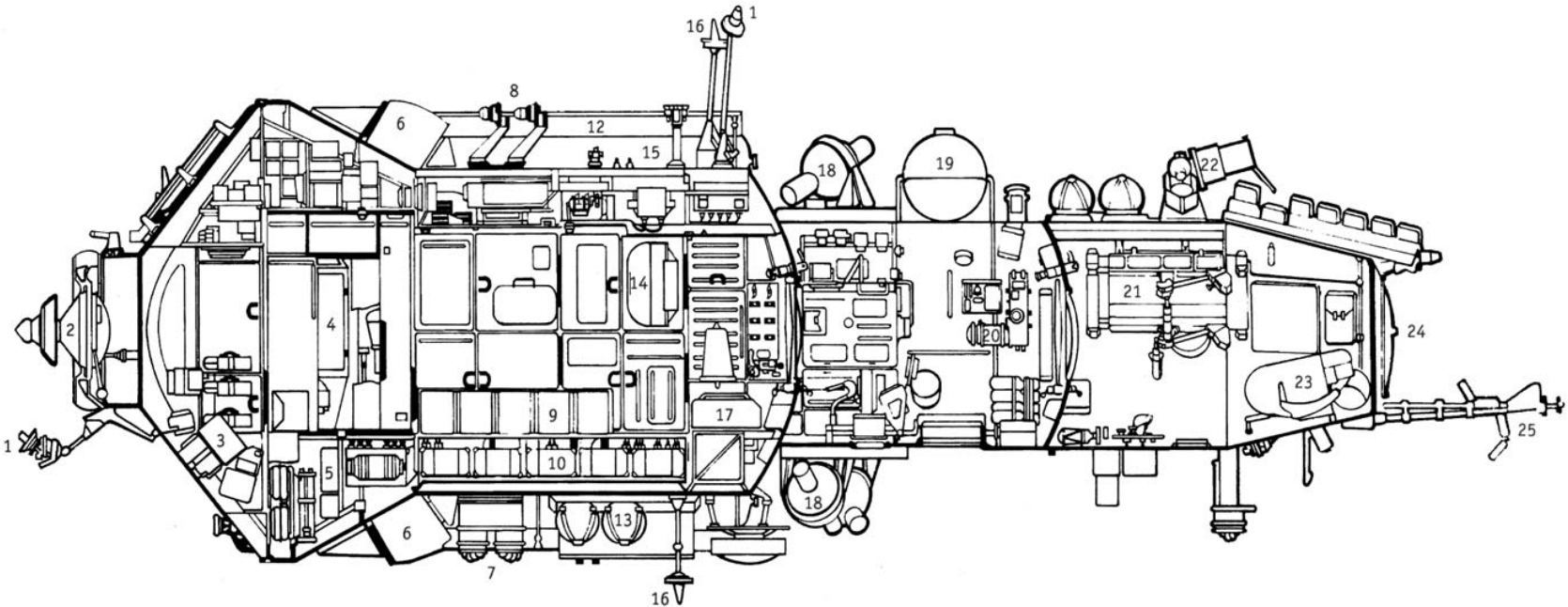


Kvant-2

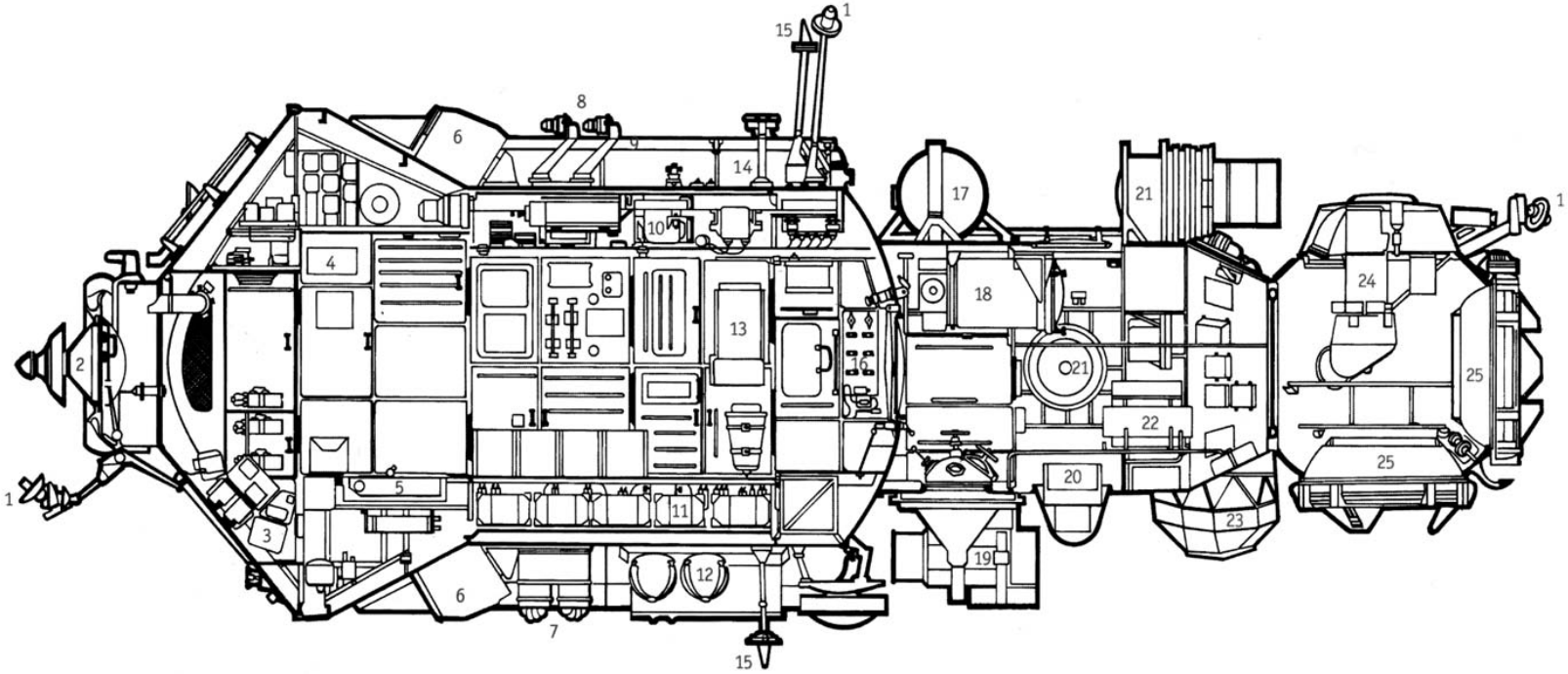


Krystal

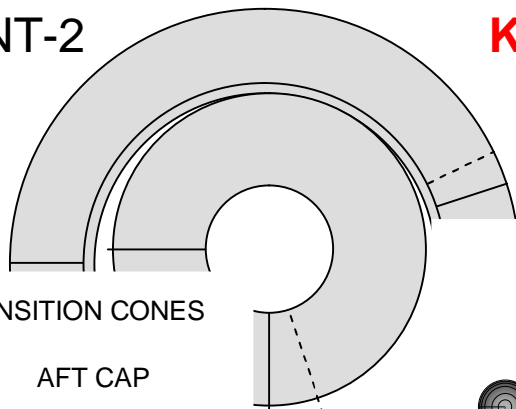
Kvant-2



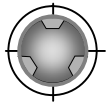
Krystal



KVANT-2

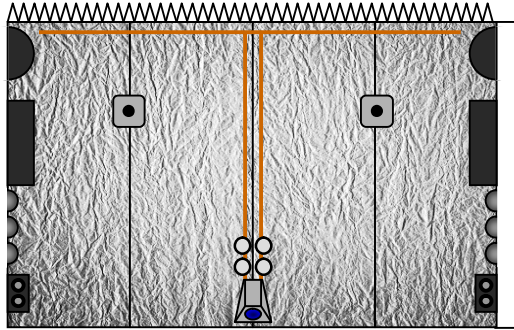


AFT TRANSITION CONES



AFT CAP

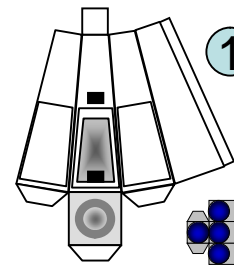
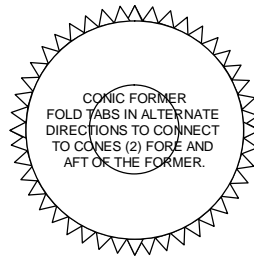
BODY CYLINDER



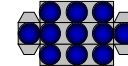
KBAHT-2



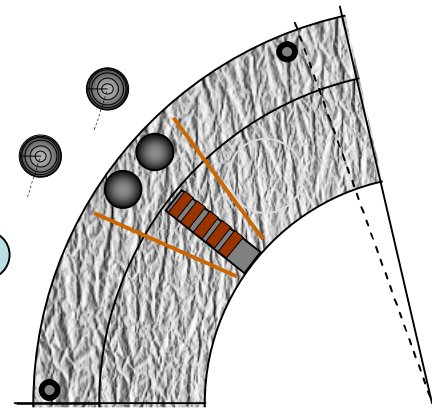
FWD CAP



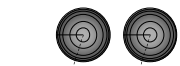
1



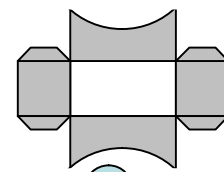
8



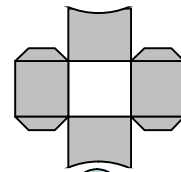
EQUIPMENT CABINETS



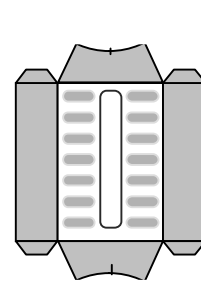
2



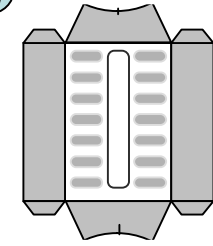
3



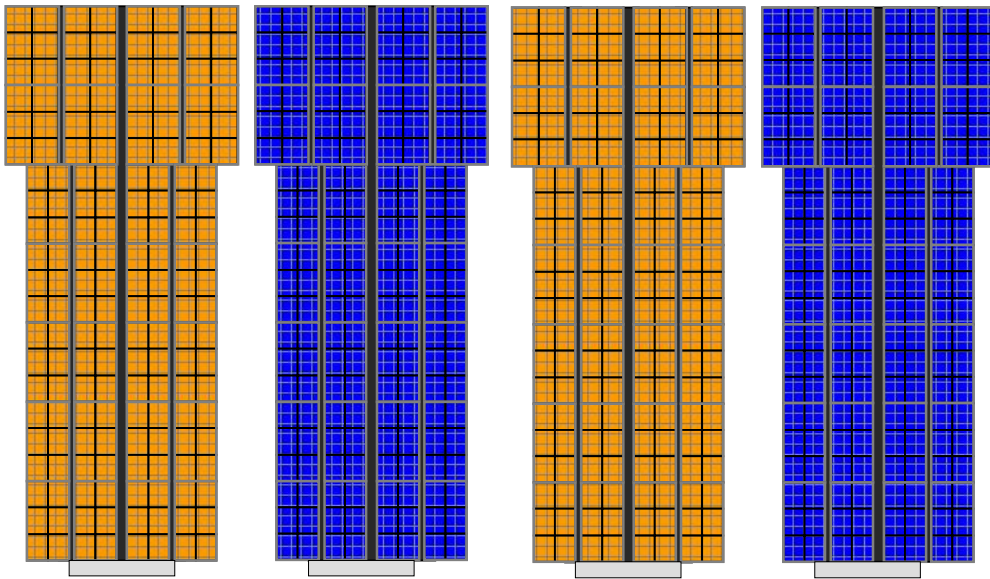
4



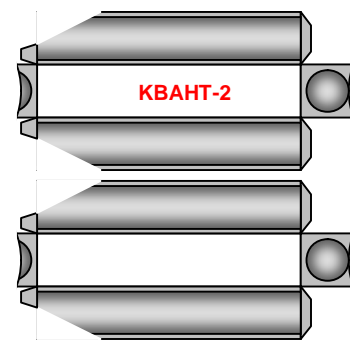
6



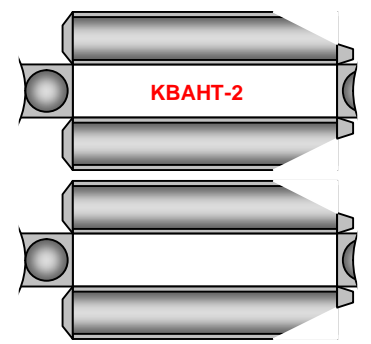
SOLAR PANEL



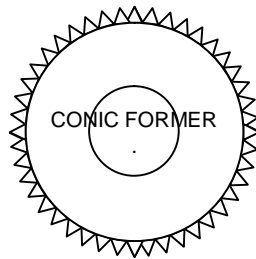
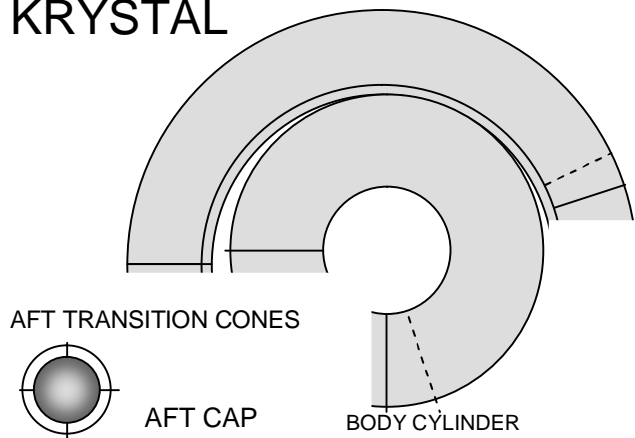
OPTIONAL FORMER



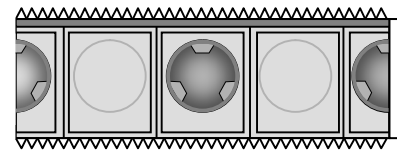
5



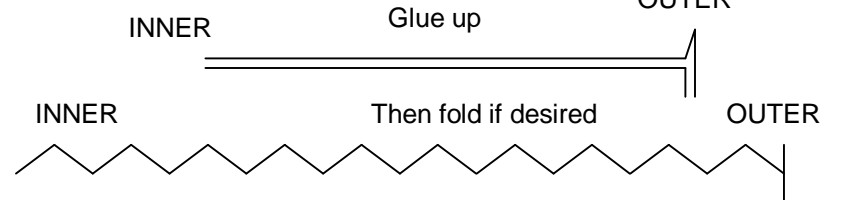
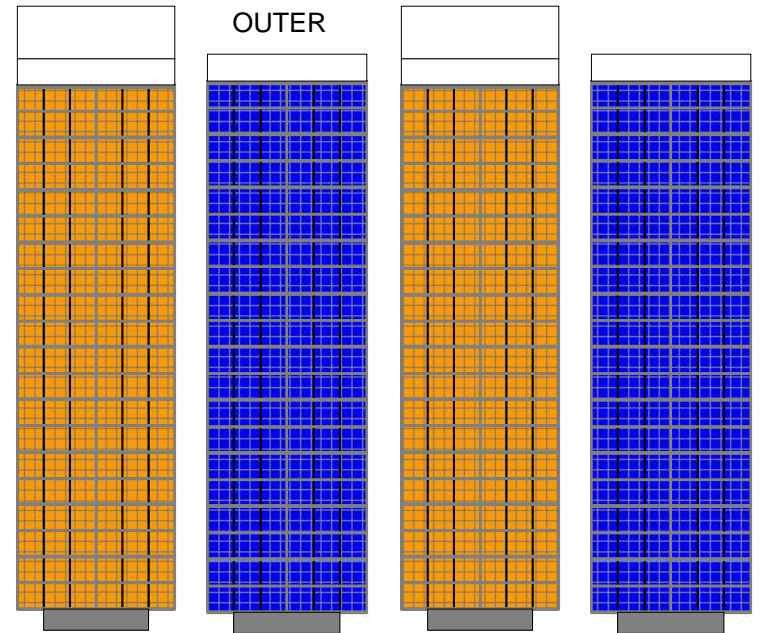
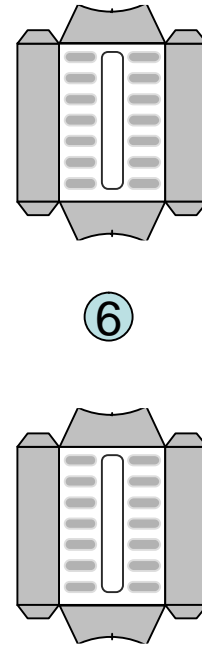
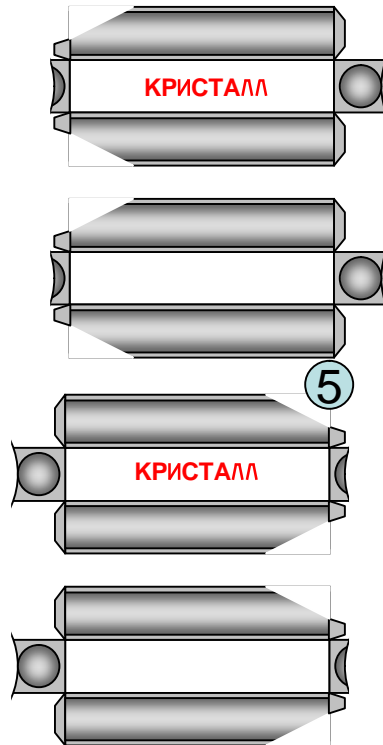
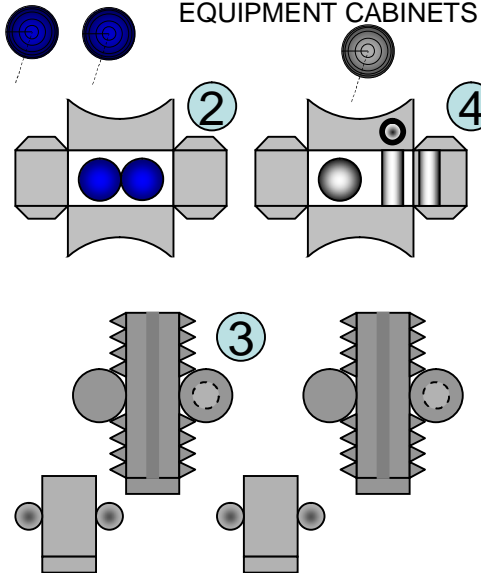
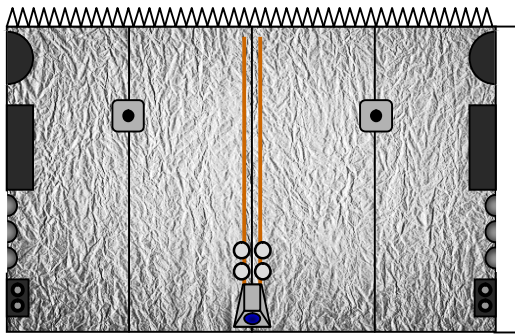
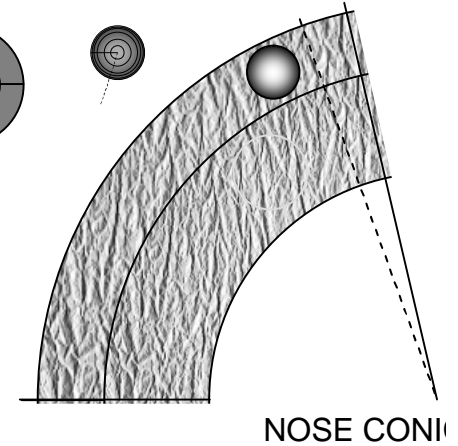
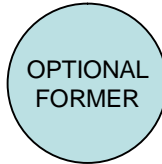
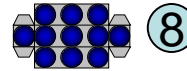
KRYSTAL



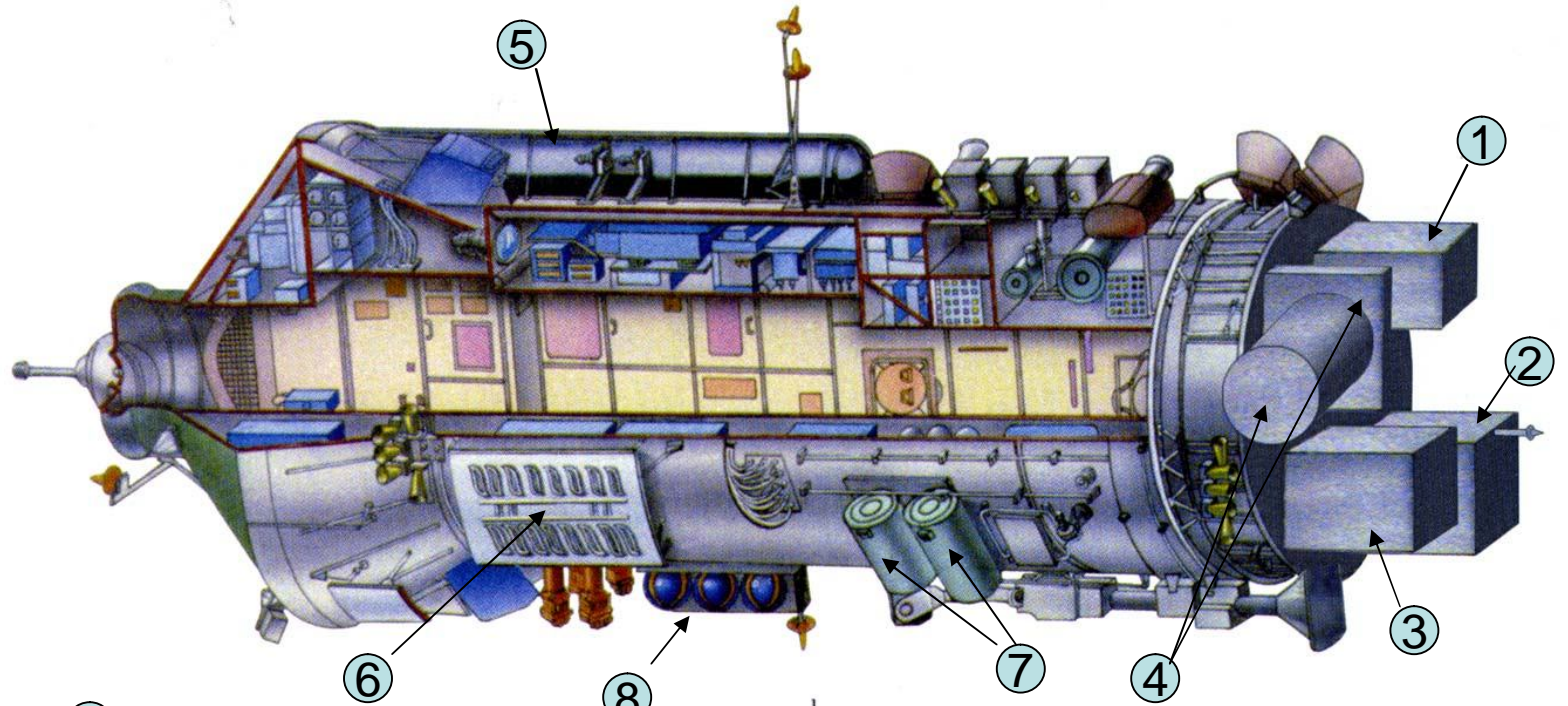
FOLD TABS IN ALTERNATE DIRECTIONS TO CONNECT TO CONES (2) FORE AND AFT OF THE FORMER



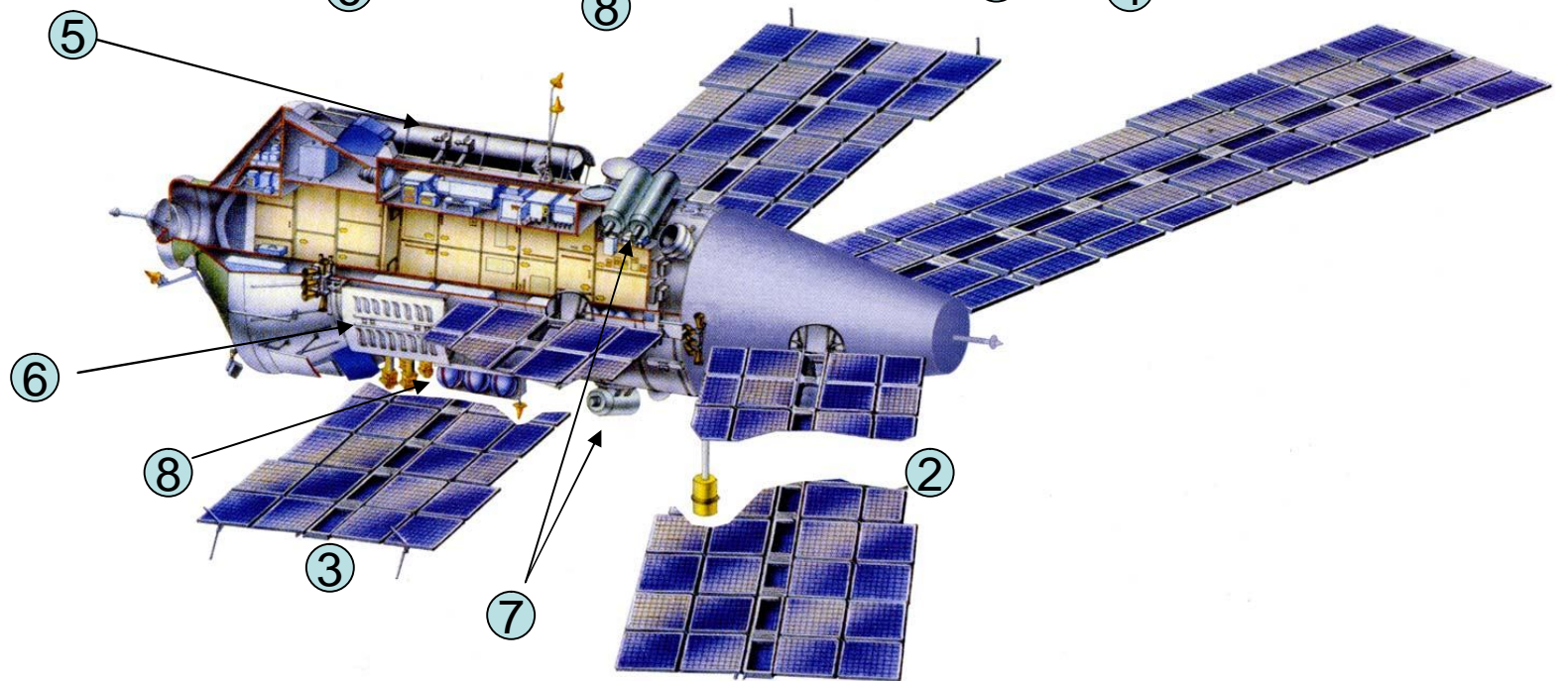
AIRLOCK SECTION



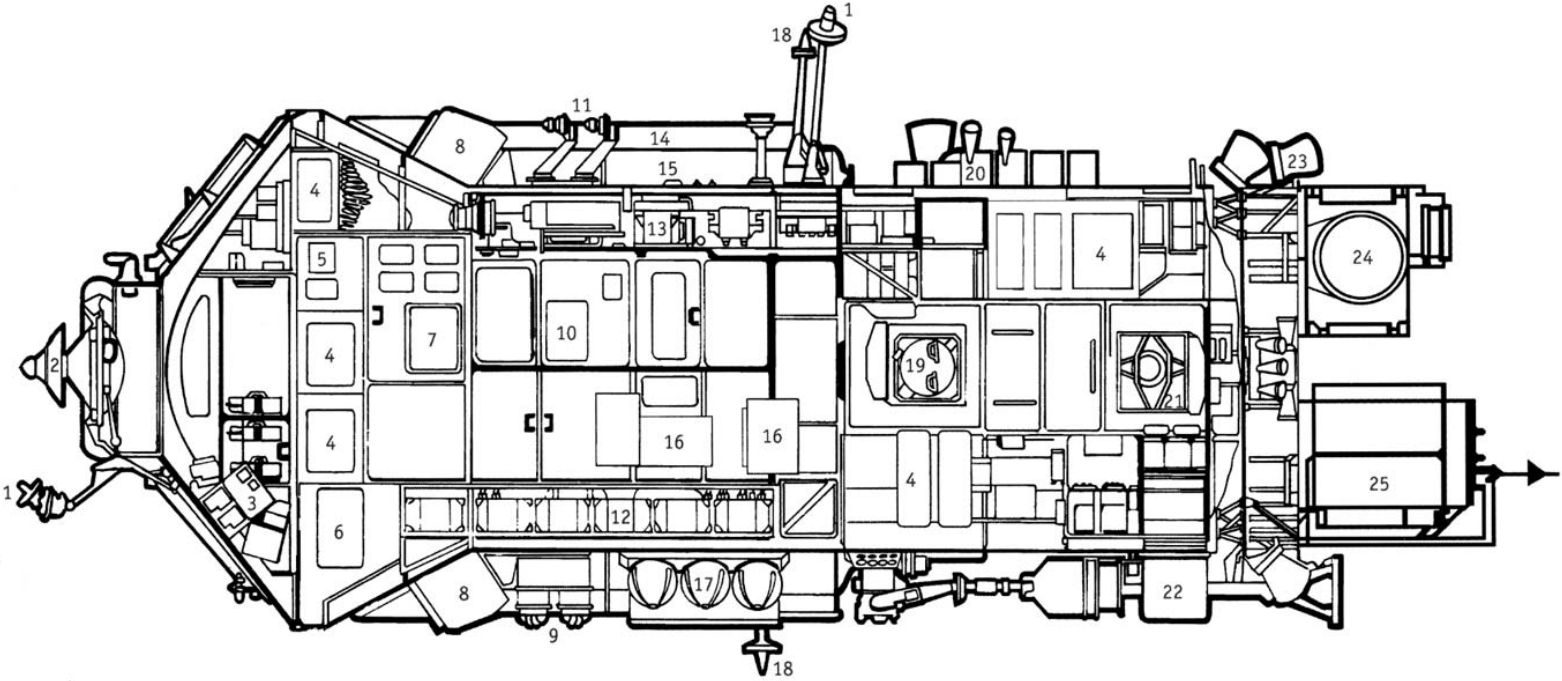
Priroda



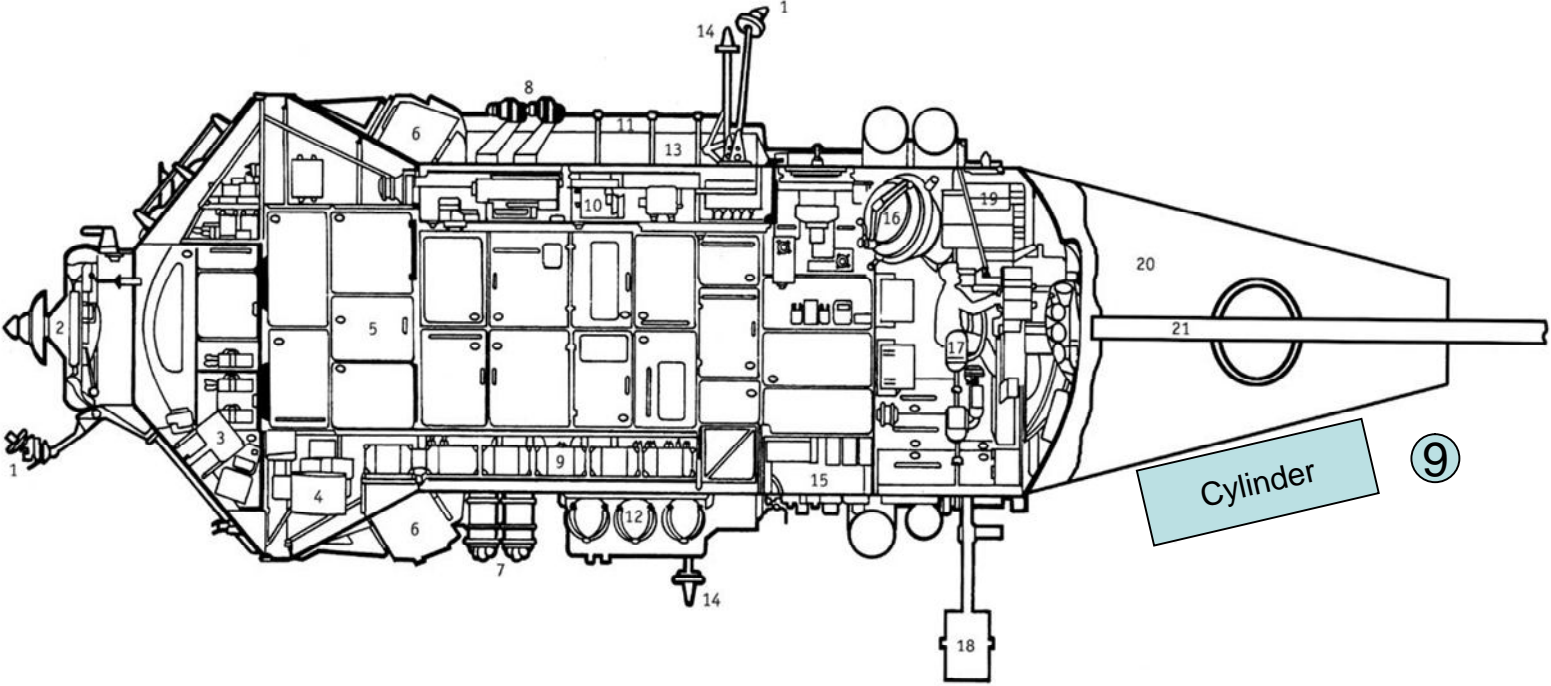
Spektr



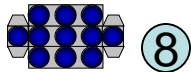
Priroda



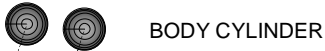
Spektr



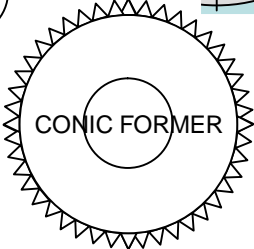
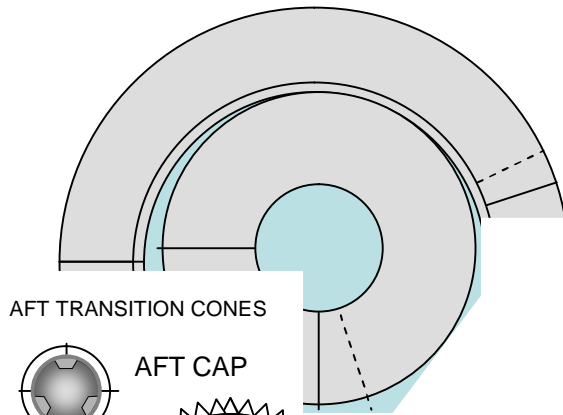
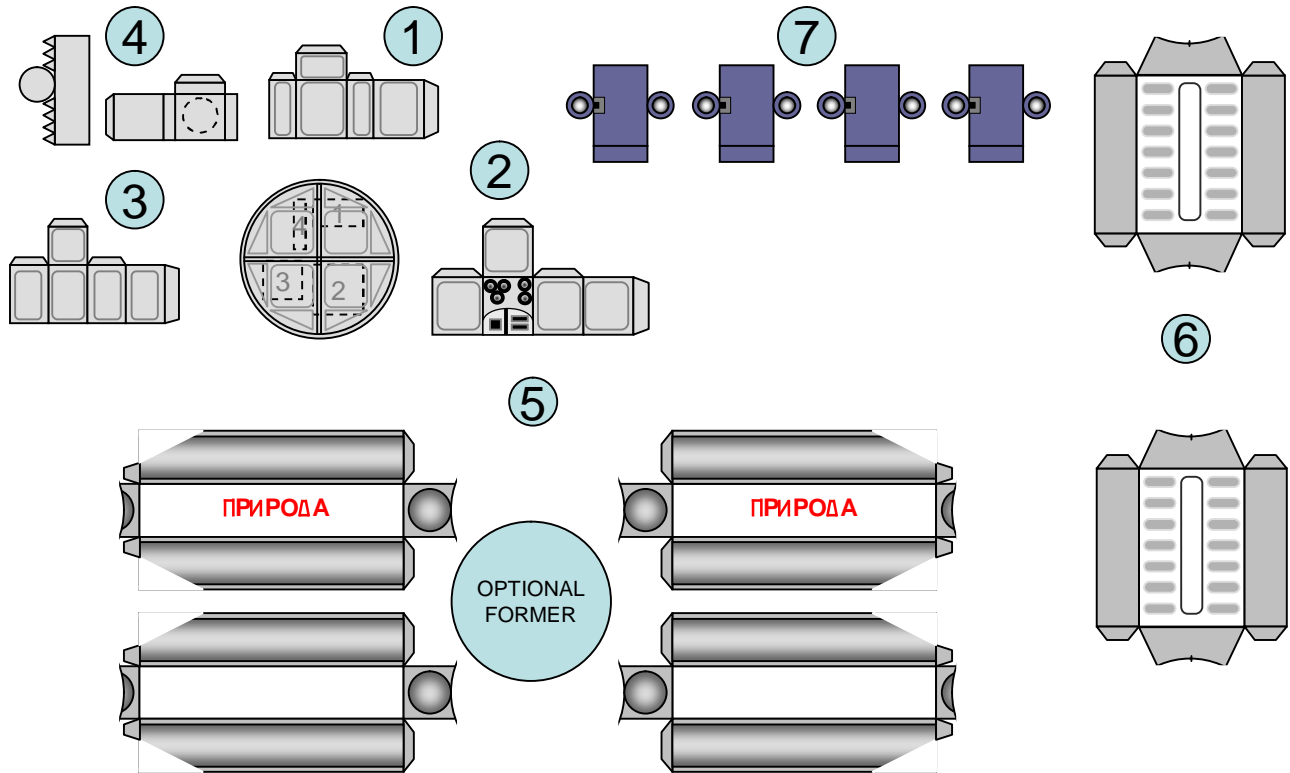
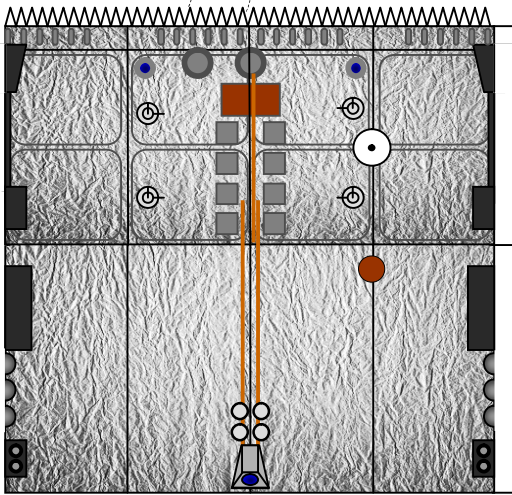
PRIRODA



GLUE TO THICK CARD IF USED,
ATTACH TO KEEL OF MODULE
OVER GRAPHIC.



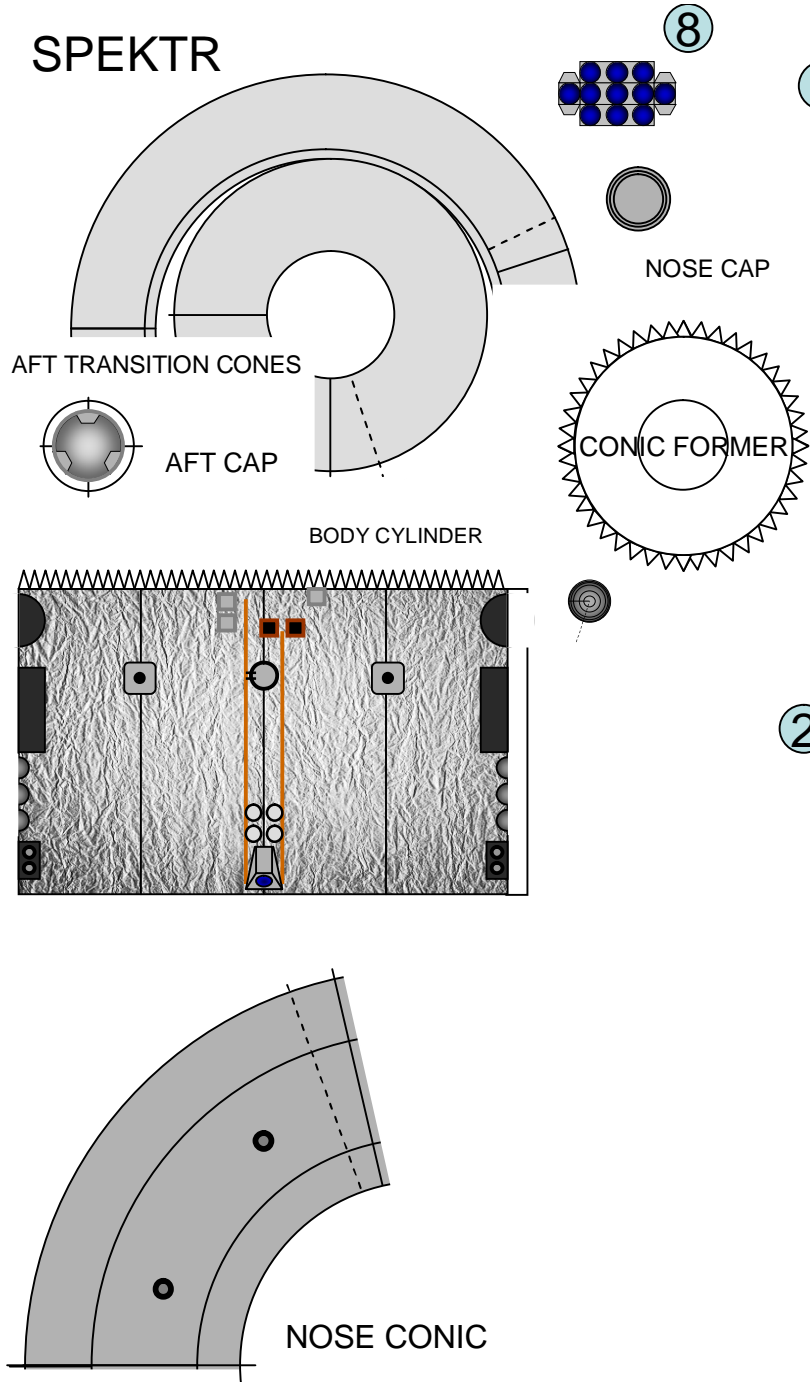
BODY CYLINDER



FOLD TABS IN
ALTERNATE DIRECTIONS
TO CONNECT TO CONES
(2) FORE AND AFT OF
THE FORMER

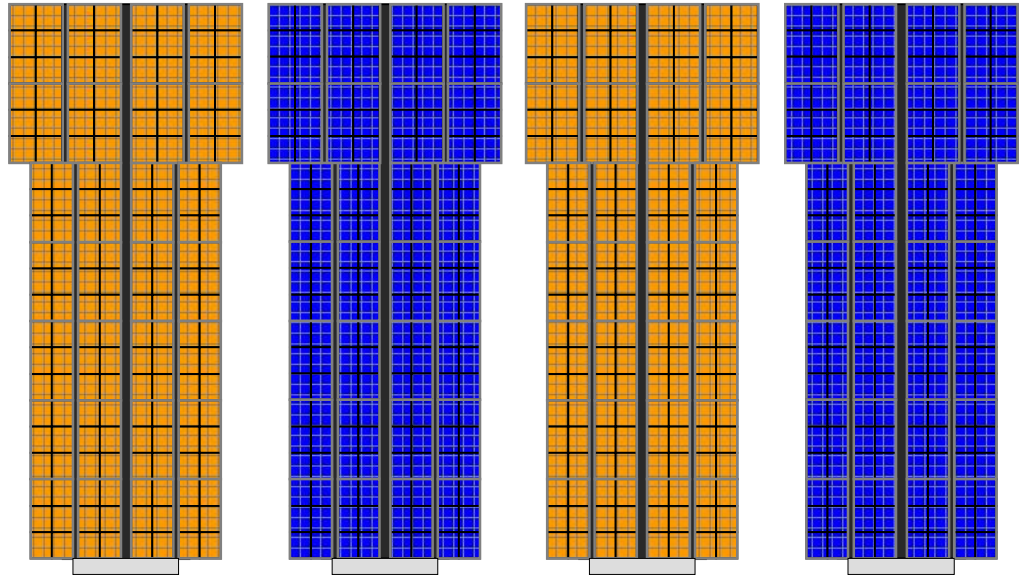
SPEKTR

Copyright 2010-John Jogerst. Not for commercial use. For private or educational use only.



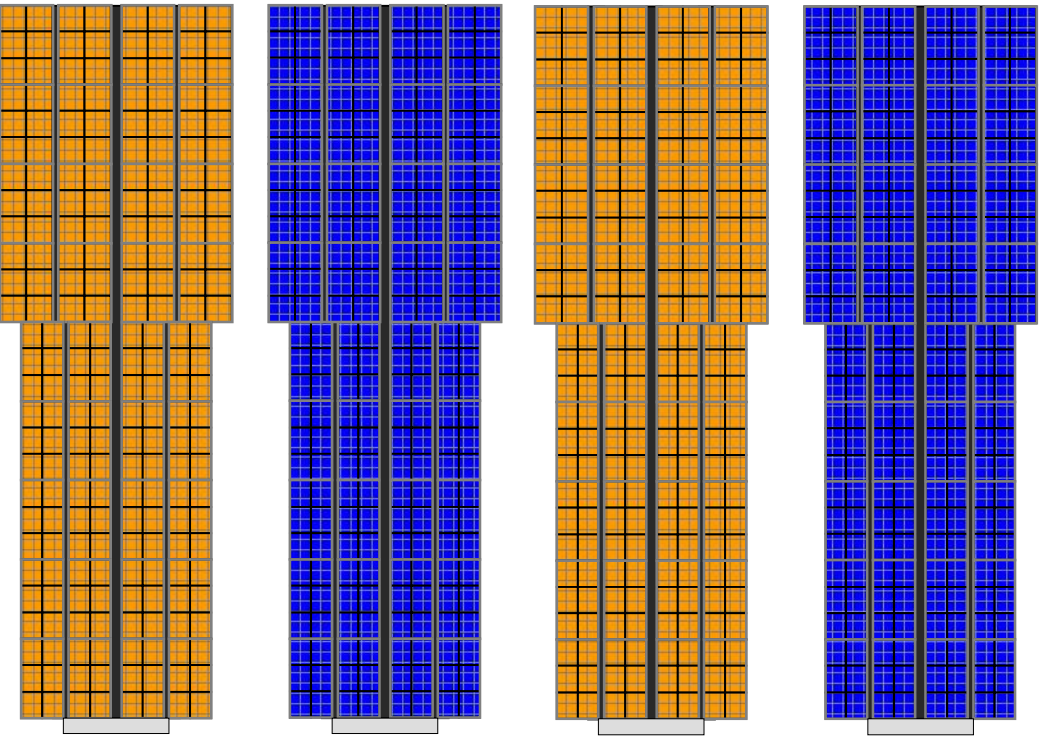
3

BODY SOLAR PANEL

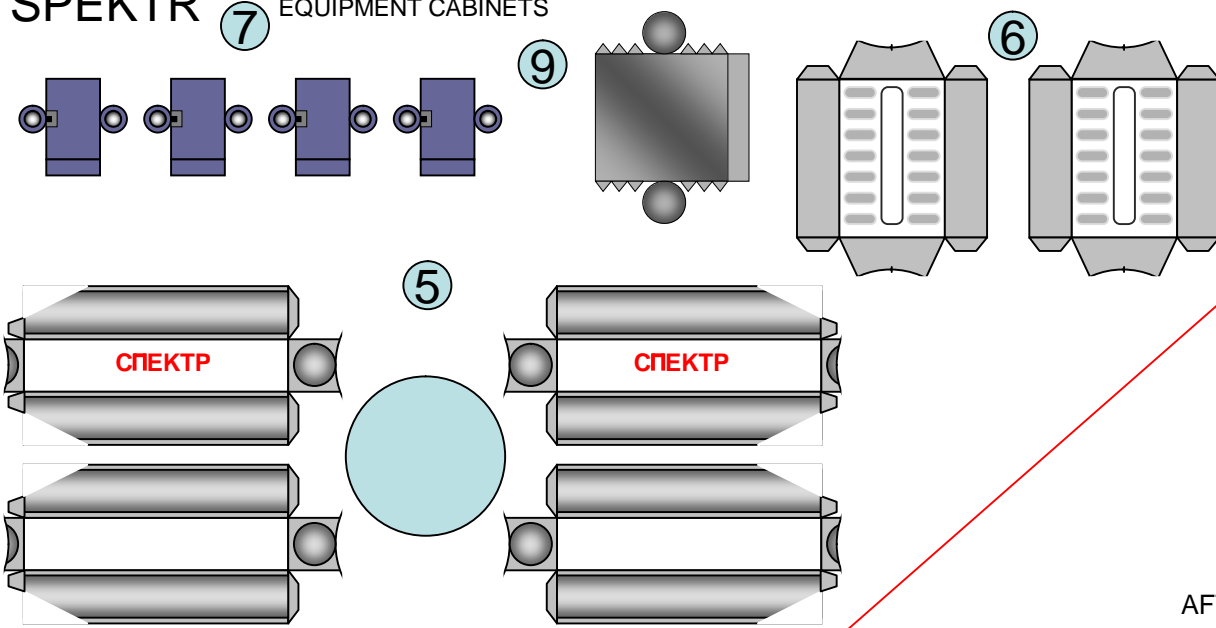


2

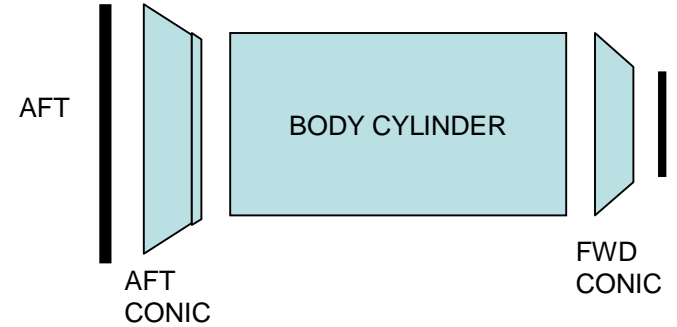
NOSE SOLAR PANEL



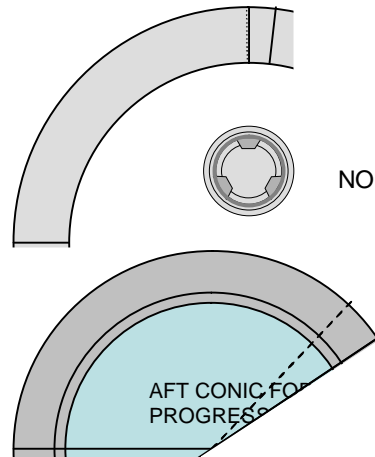
SPEKTR EQUIPMENT CABINETS



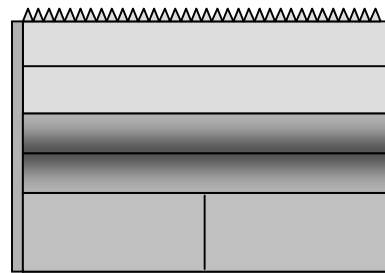
PROGRESS



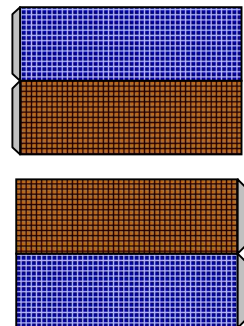
FWD CONIC



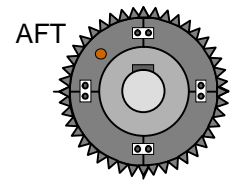
NOSE CAP



BODY CYLINDER



PROGRESS ARRAYS



AFT