

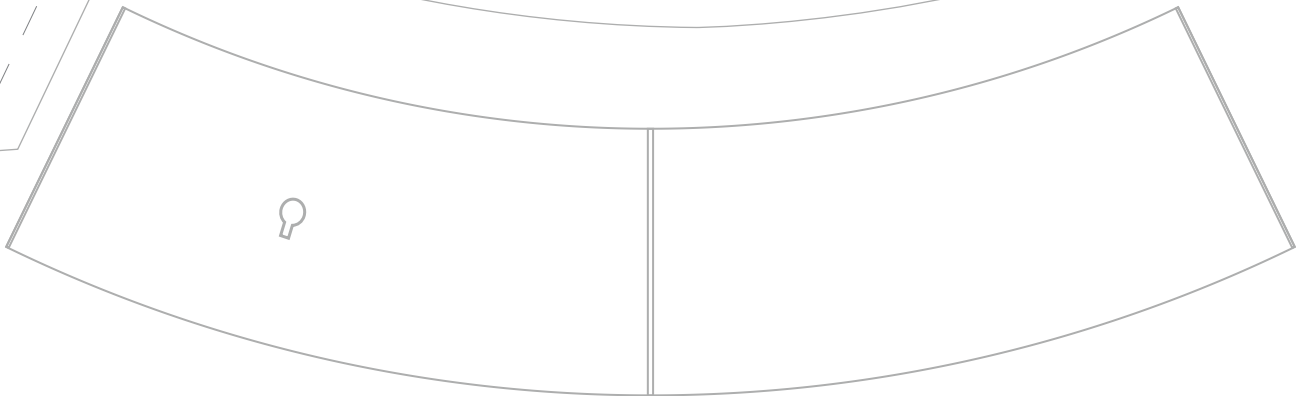
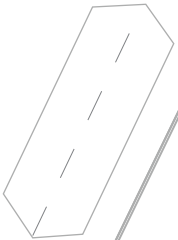
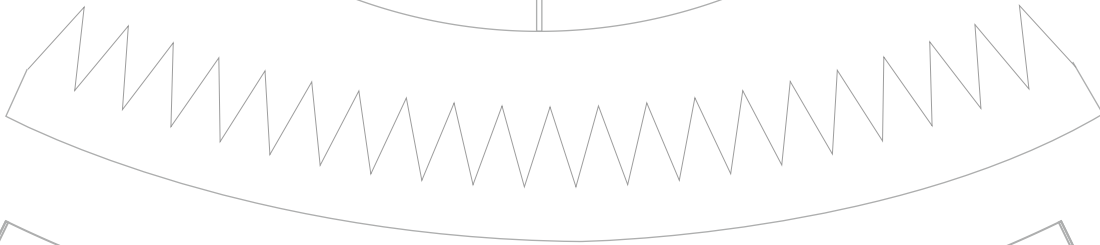
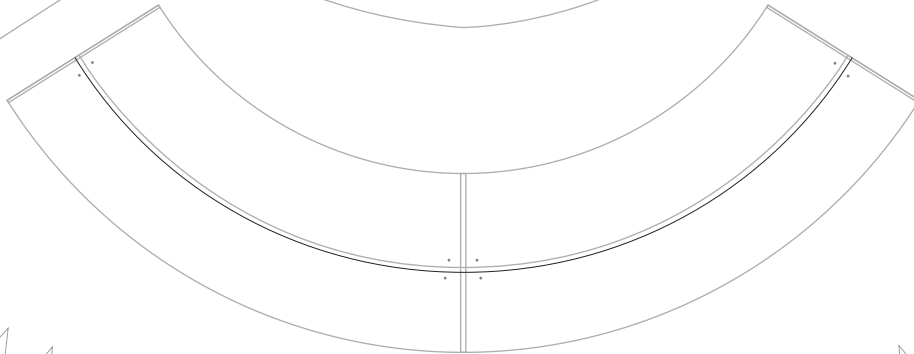
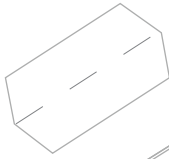
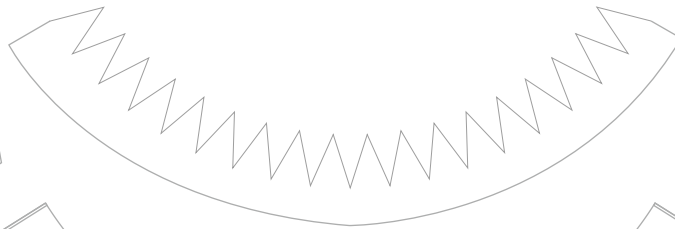
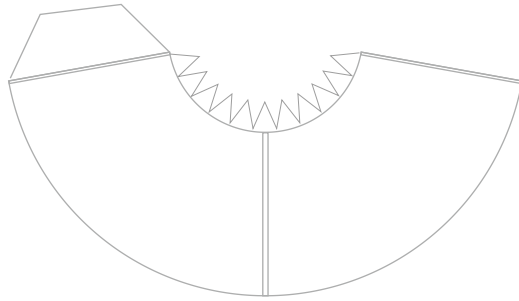


# ATLAS V 500 Series

Print on Cardstock ( 110 lb )

## Top of Fairing Shroud

1:96 Scale





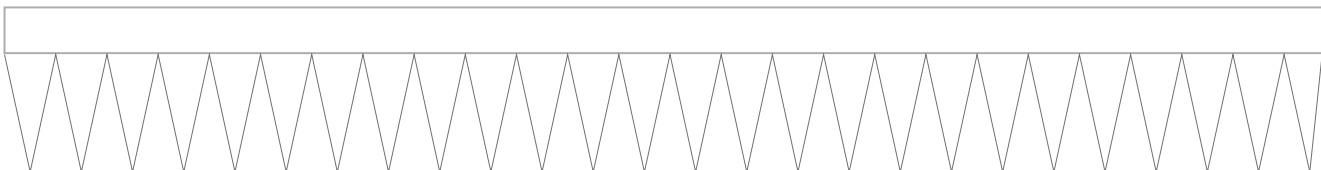
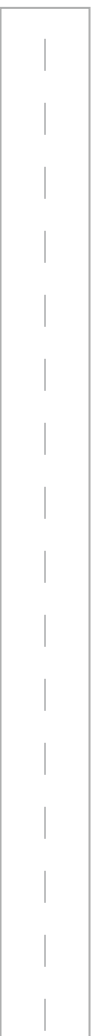
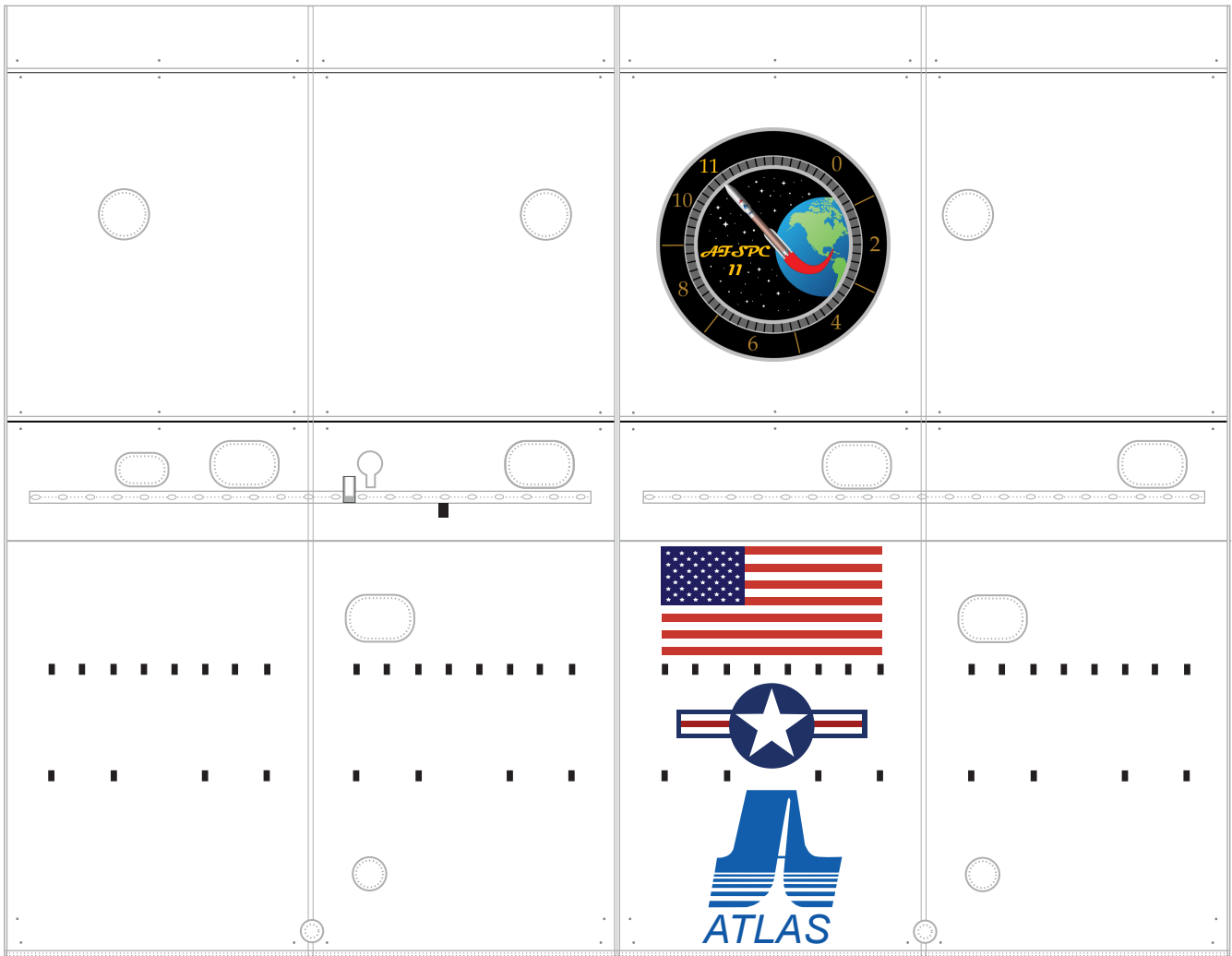
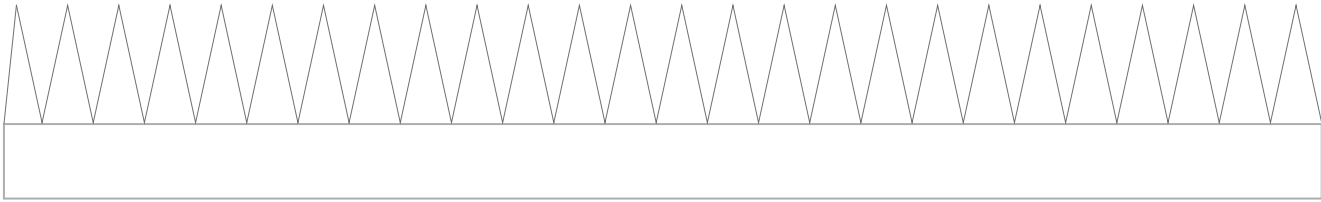
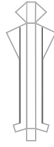
1 cm  
1 inch

# ATLAS V AFSPC-11

Print on Cardstock ( 110 lb )

## Short Payload Fairing

1:96 Scale





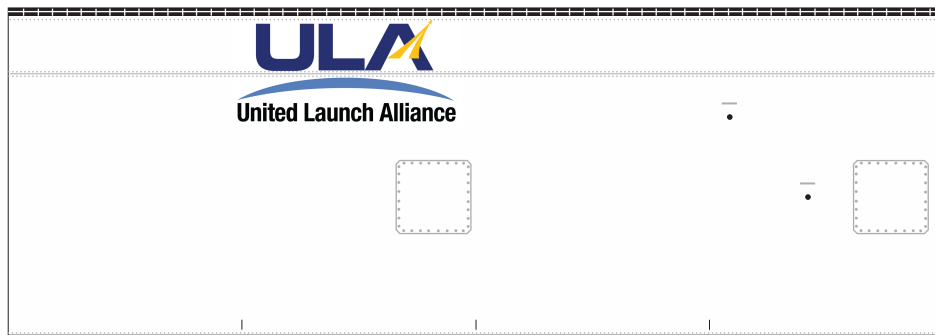
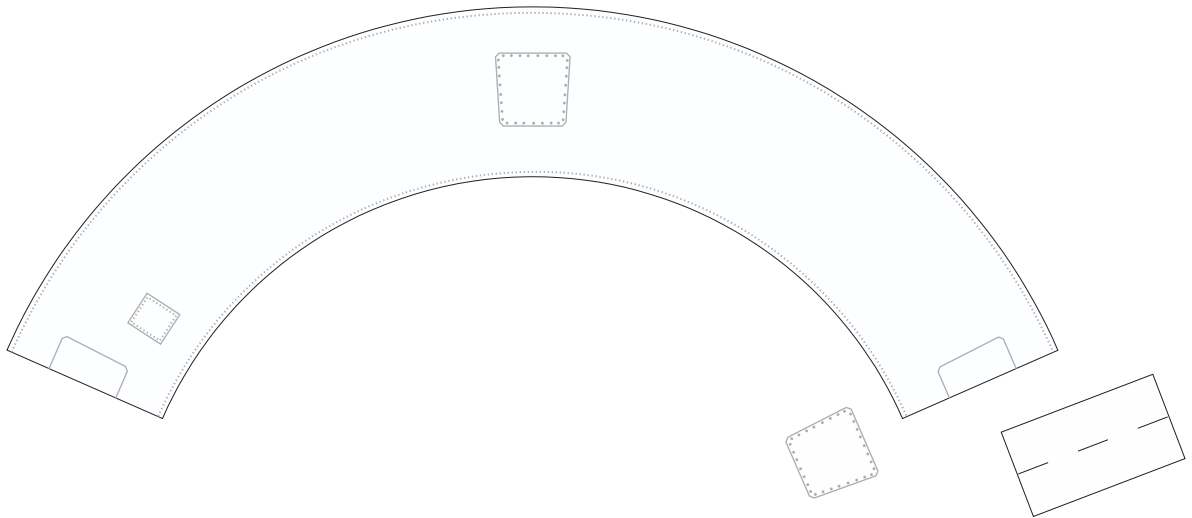
1 cm  
1 inch

# ATLAS V 500 Series

Print on Cardstock ( 110 lb )

## Fairing Shroud and Common Core Booster Connectors

1:96 Scale

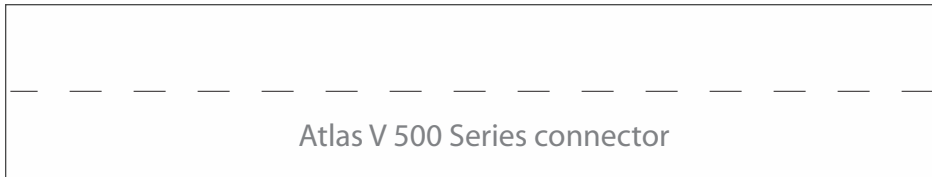




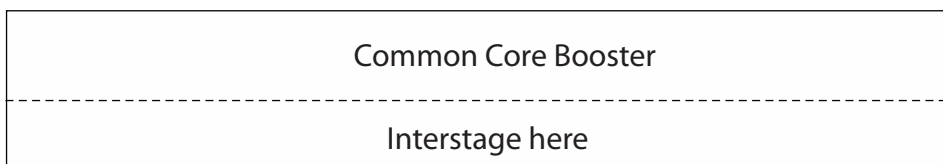
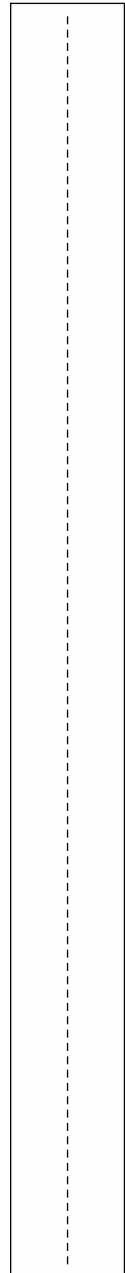
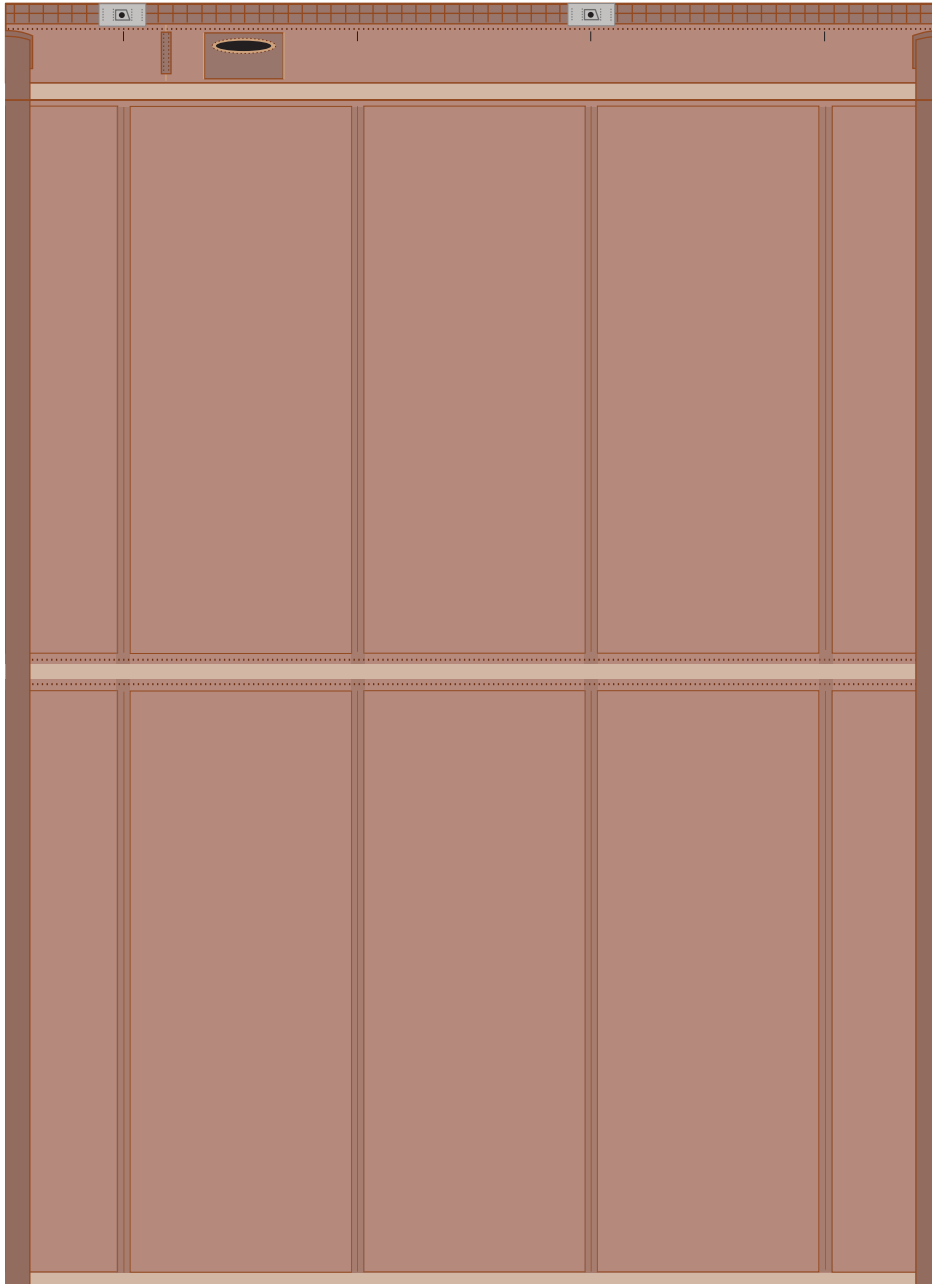
Print on Cardstock ( 110 lb )

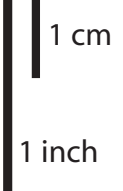
# ATLAS V Common Core Booster 500 Series

1:96 Scale



Common Core Booster

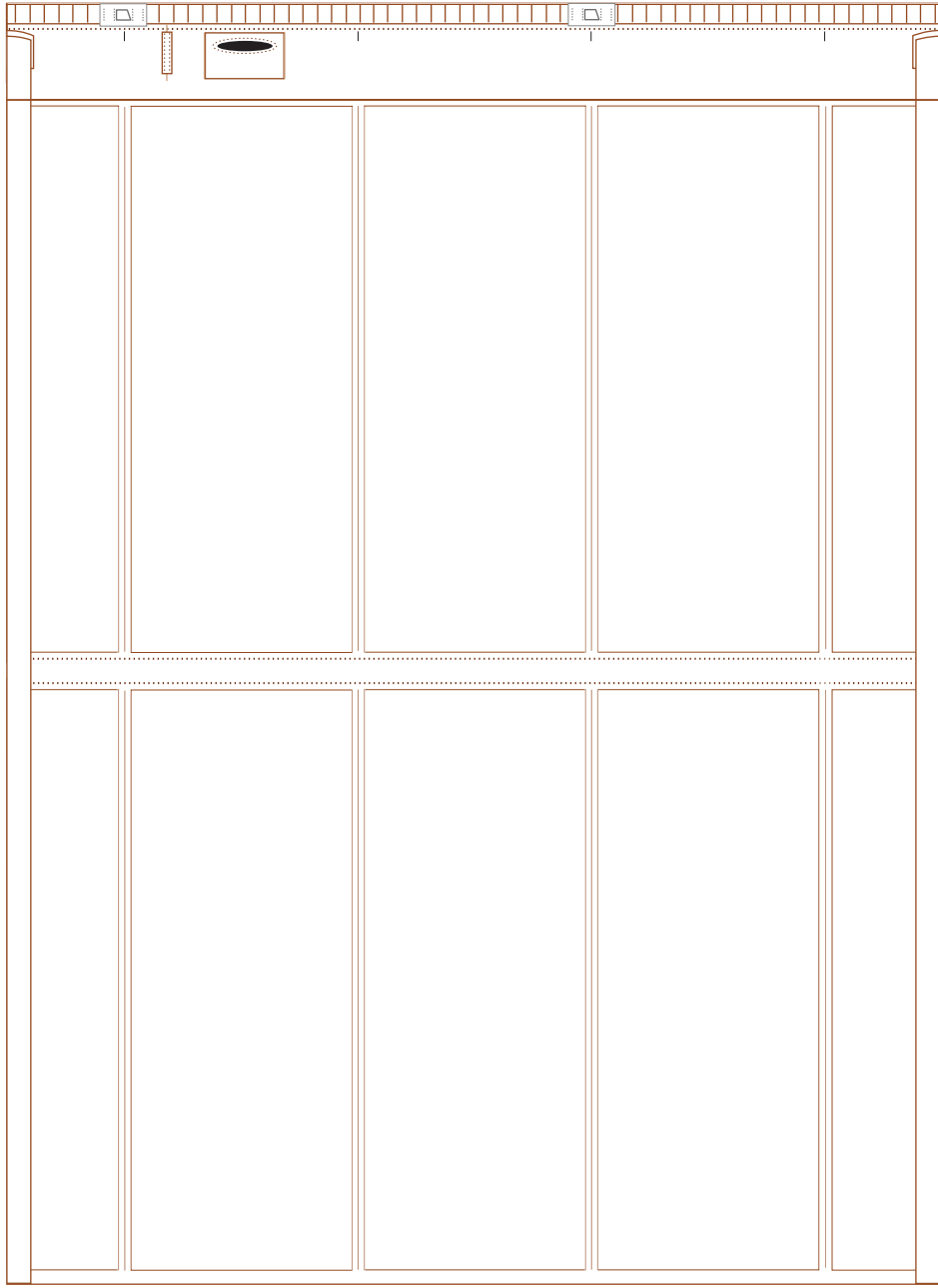




# ATLAS V Common Core Booster 500 Series

1:96 Scale

Print on Metallic paper





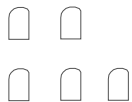
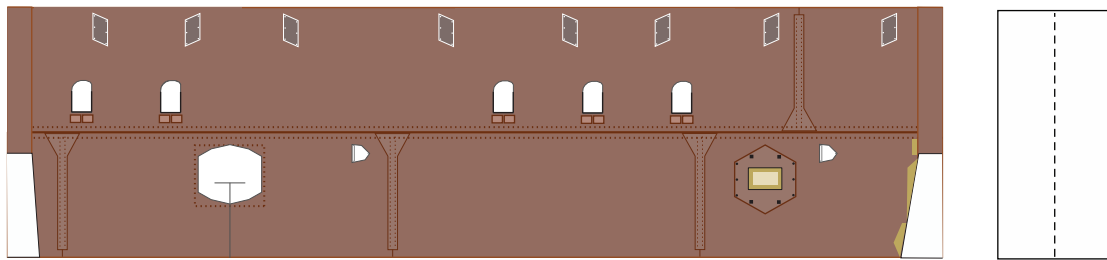
Print on Cardstock ( 110 lb )

# ATLAS V Interstage Section

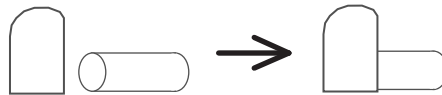
1:96 Scale



New Version 2016



Glue a 2mm x 5 mm rod on the back of each attachment door to cover the openings on the Interstage section if no SRBs are used



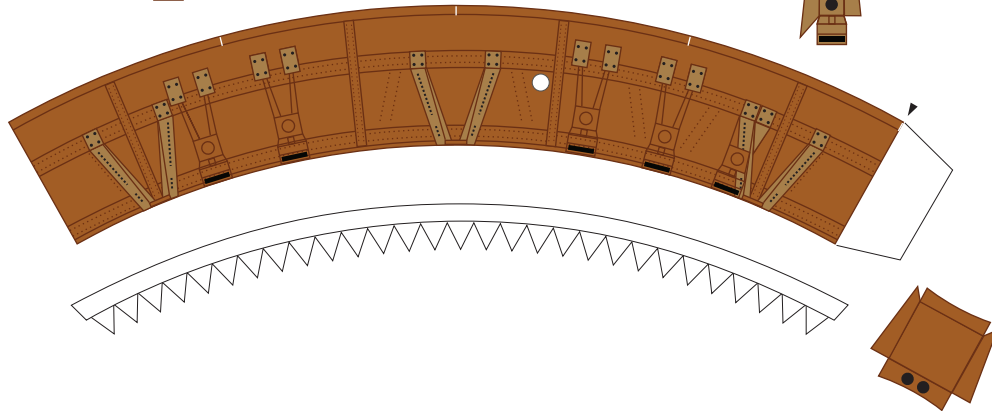
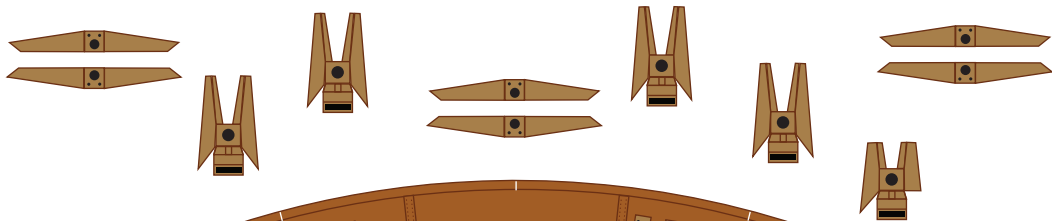
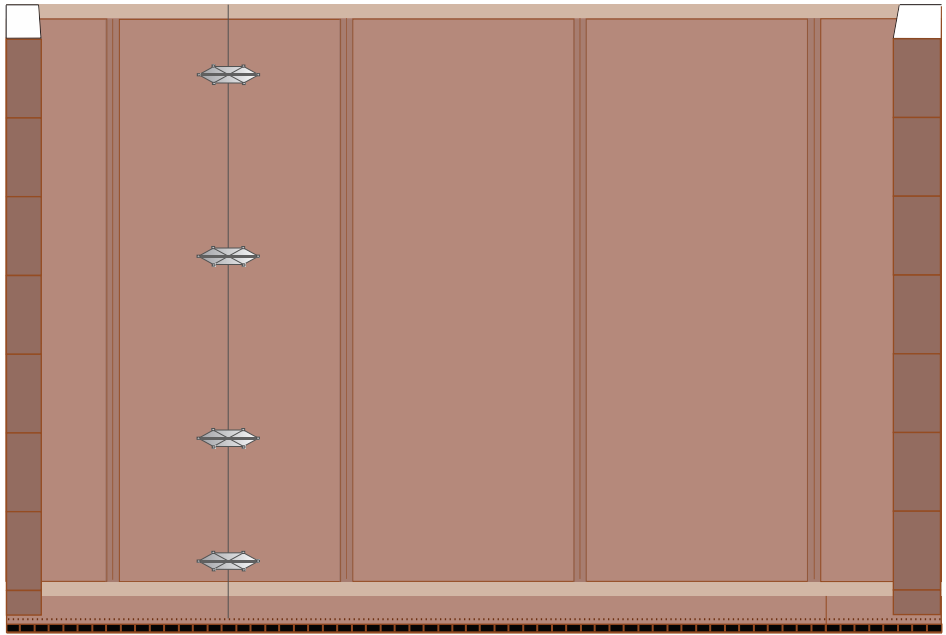
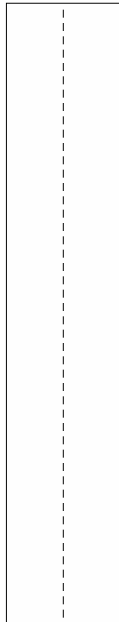
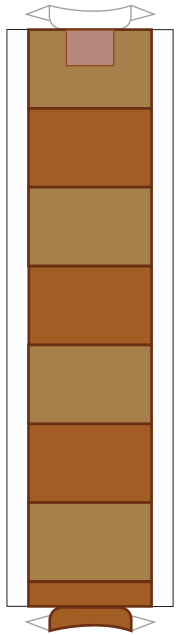
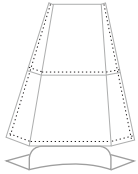


Print on Cardstock ( 110 lb )

# ATLAS V Common Core Booster

Bottom section

1:96 Scale



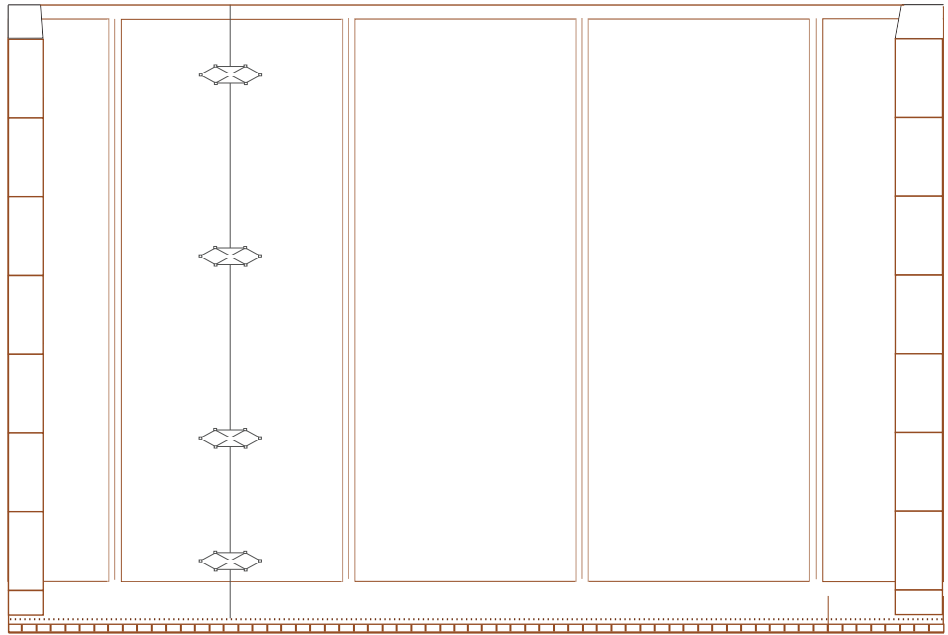


# ATLAS V Common Core Booster

Bottom section

1:96 Scale

Print on Metallic paper







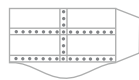
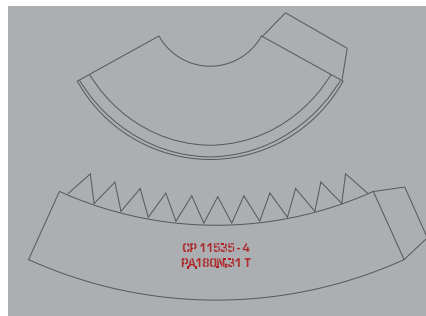
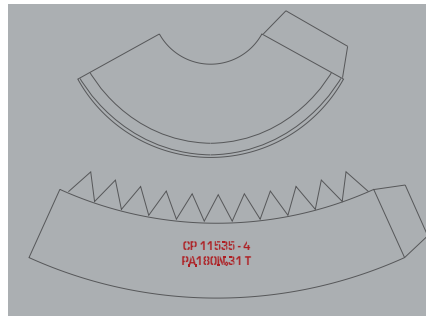
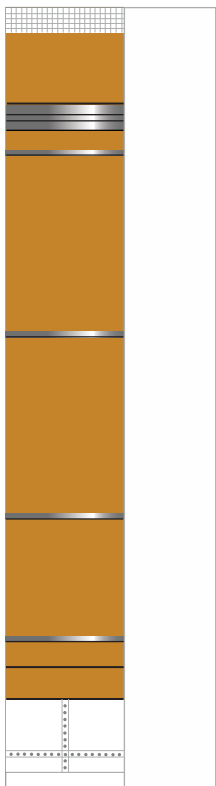
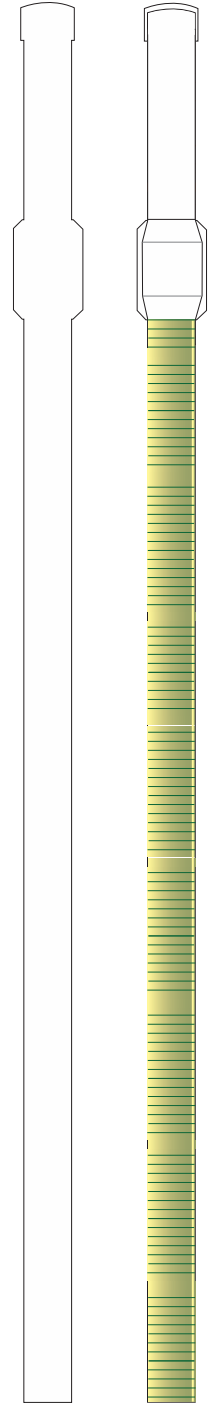
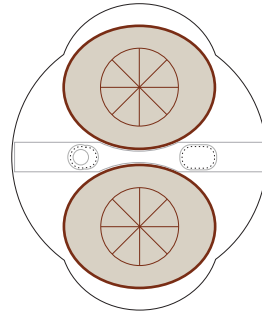
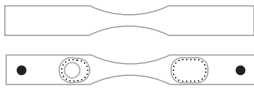
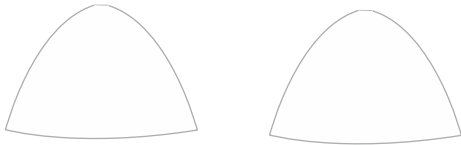
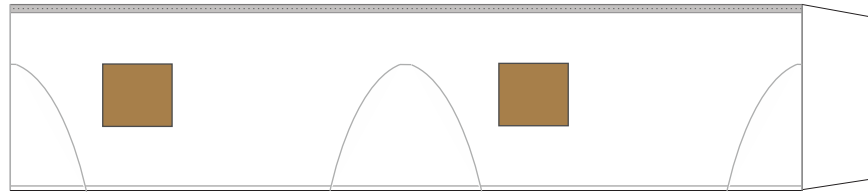
1:96 Scale



# Atlas V Fuel line, Cable tray, Engines

Print on Cardstock ( 110 lb )

Rev.3/15





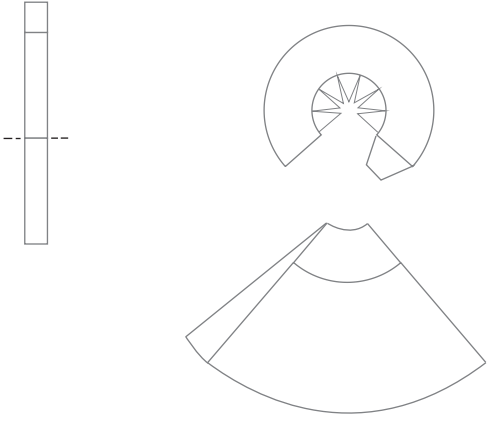
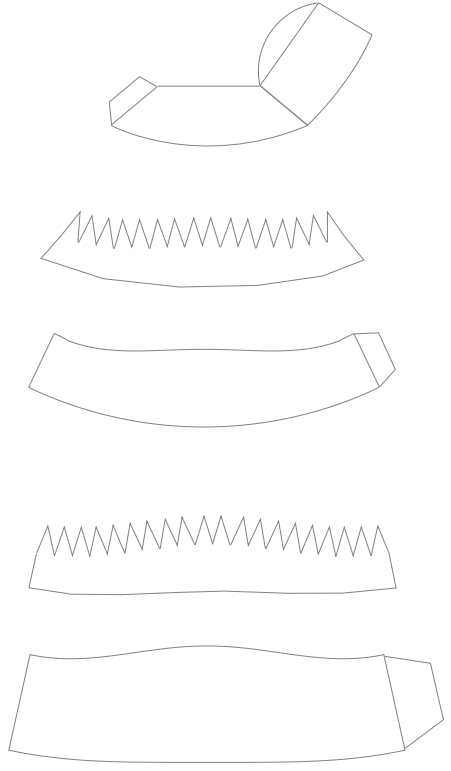
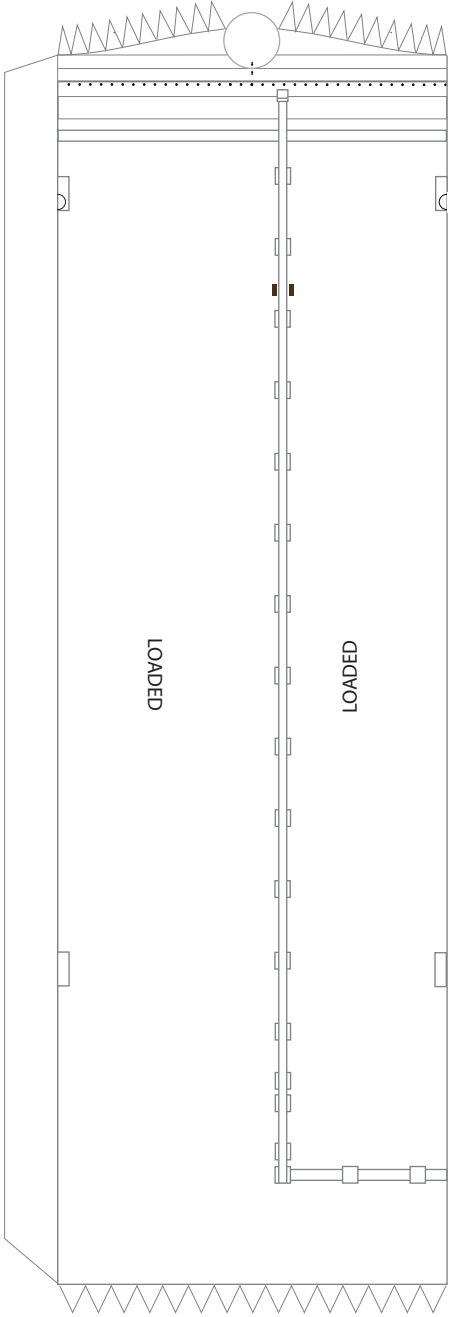
Print on Cardstock ( 110 lb )

# ATLAS V Solid Rocket Booster

Print X 5 for 551 Series

1:96 Scale

Glue rod  
(2 mm x 8 mm)

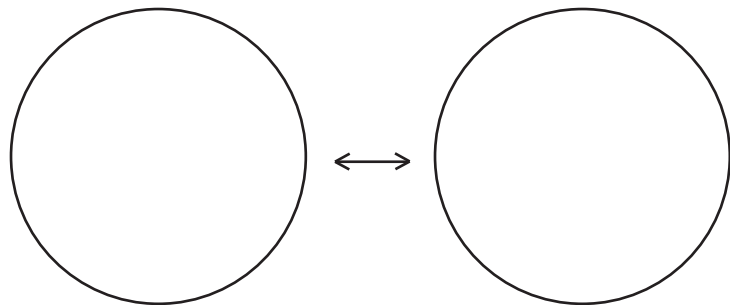
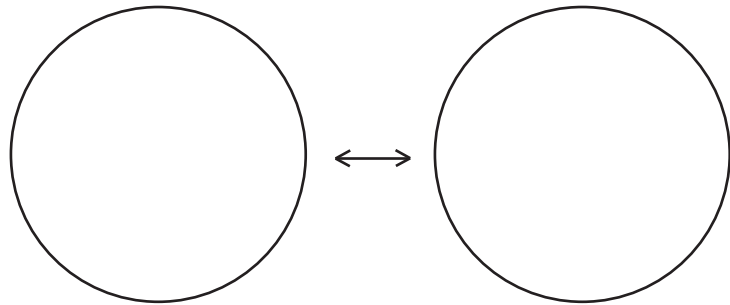
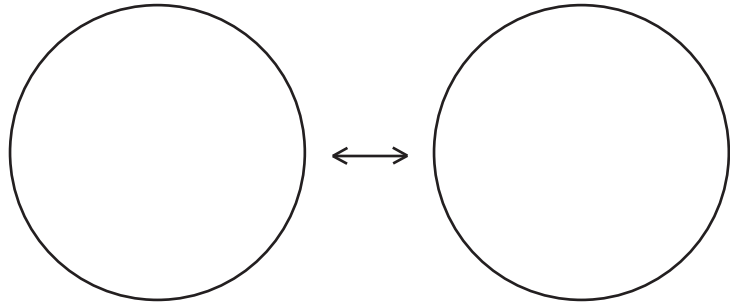
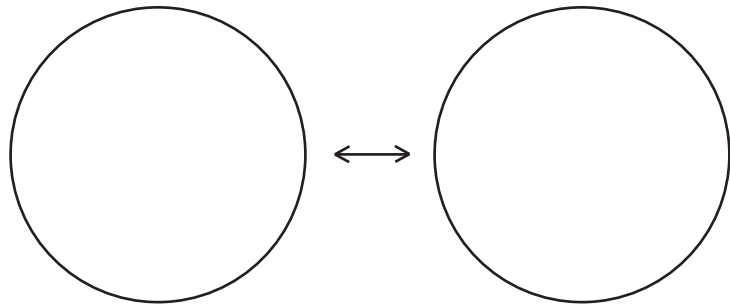
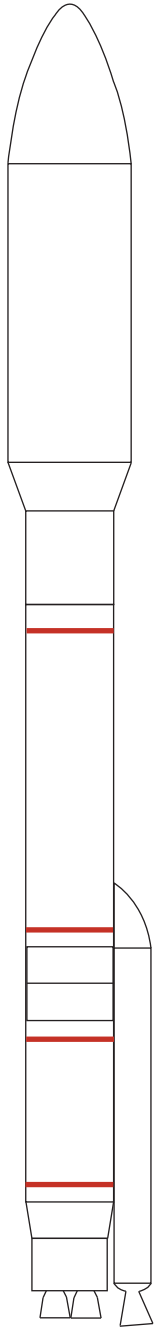




1:96 Scale

# ATLAS V Common Core Booster Formers

Print on Cardstock ( 110 lb )





Print on Cardstock ( 110 lb )

# Atlas V Base template

(use foam board and glue stand cones)

1:96 Scale

cut

cut



Atlas V 551  
AFSPC-11

[www.axmpapermodels.com](http://www.axmpapermodels.com)

